

KING'S  
*College*  
LONDON

---

---



# Medicine MBBS at GKT

**KING'S**  
*College*  
**LONDON**



Professor Nicki Cohen,  
Dean of Medical Education





# GKT School of Medical Education

- History of medical training since 16th century.
- Name refers to longstanding association with our hospital partners Guy's and St Thomas' and King's College.
- Thriving community of 2,000 undergraduate medical students.



Standard programme:  
244 home  
84 O/S students

77 home EMDP  
students



25 home GEM  
students (prior life  
sciences degree)

Approx 140  
students  
intercalate or  
similar each year

*GKT shapes its graduates to be doctors who are compassionate, critical thinkers, making a positive difference across society.*



# The evolving role of doctors

Increasing clinical complexity

Holism: mind and body

Technological advances

More informed and engaged patients

Integrating health and social care teams





# GKT focus:

Critical scientific thinkers

Collaborative leaders and innovators

Outstanding patient-centred clinicians

Excellent team-players

Educators and life-long learners

Resilient and adaptable professionals





# KCL MBBS Leadership Team



Nicki Cohen, Dean of  
Medical Education



Sam Thenabadu, MBBS  
Programme Director



James Galloway, MBBS  
Director of  
Assessments



Cindy Sethi, MBBS  
Director of Admissions



Janice Rymer, Dean of  
Student Affairs



Russell Hearn, MBBS  
Programme Director  
(Branch Campus)



Vivek Srivastava, MBBS  
Director of Quality



Elena Nikiphorou,  
MBBS Director of  
Student Support



# GKT priorities

Community

Identity

Support

Engagement

Excellent graduates

Impact

to make the world a better place





# Projects – almost 1/7 time

- Introduction to Clinical Research
- Student Selected Component
- Scholarly Project Module
- Doctor as Teacher
- Quality Improvement Project
- Career Development Period
- Elective and Global Health



---

Doctor as  
researcher

Doctor as  
teacher

Doctor as  
improver

Doctor as  
innovator

Doctor as  
clinician

Doctor as  
entrepreneur

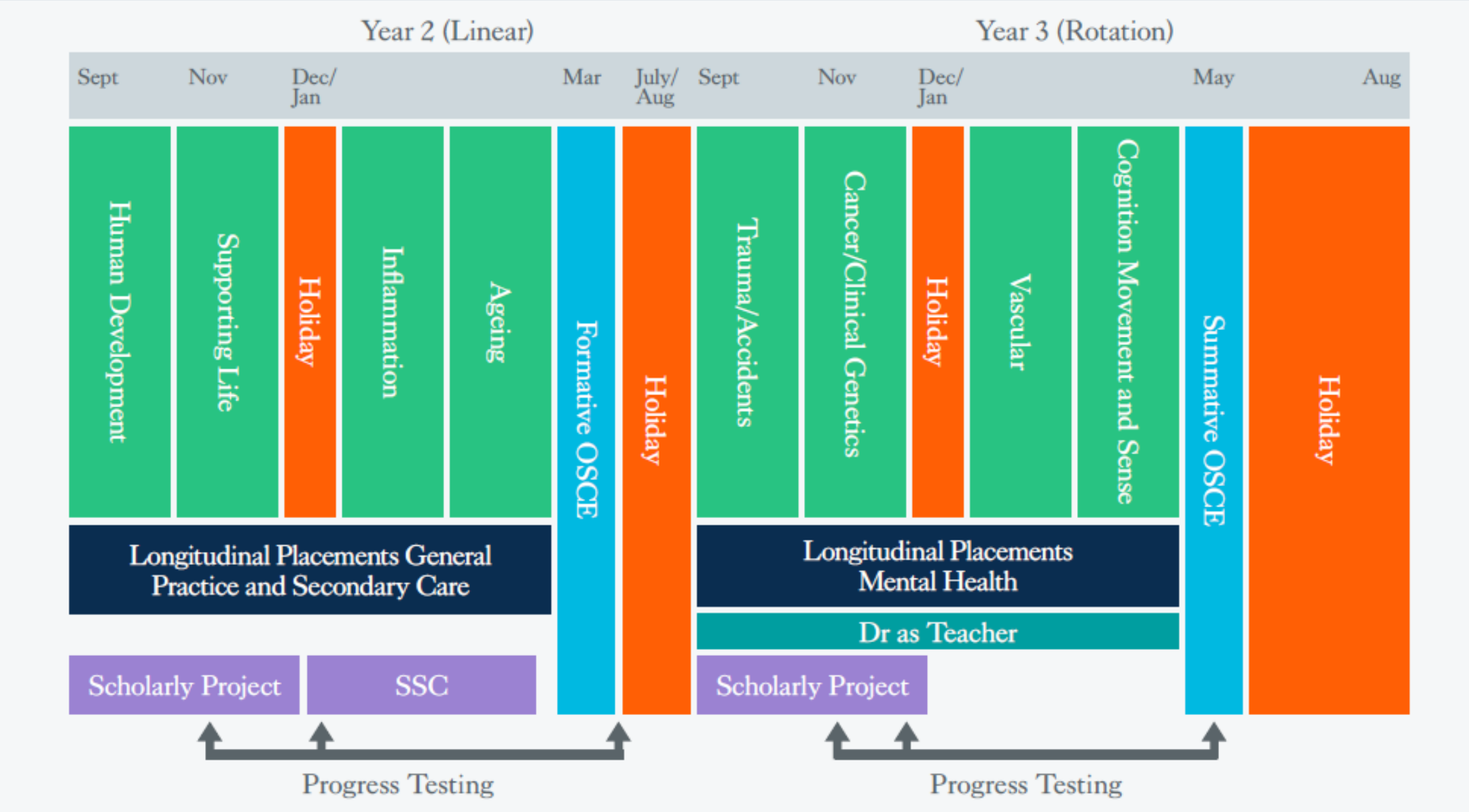
Doctor as  
policy-maker

Doctor as  
data analyst

Doctor as  
engineer



# Stage 2



# Year 2 Blocks

## Human development



## Inflammation



## GP Longitudinal placement



## Supporting life



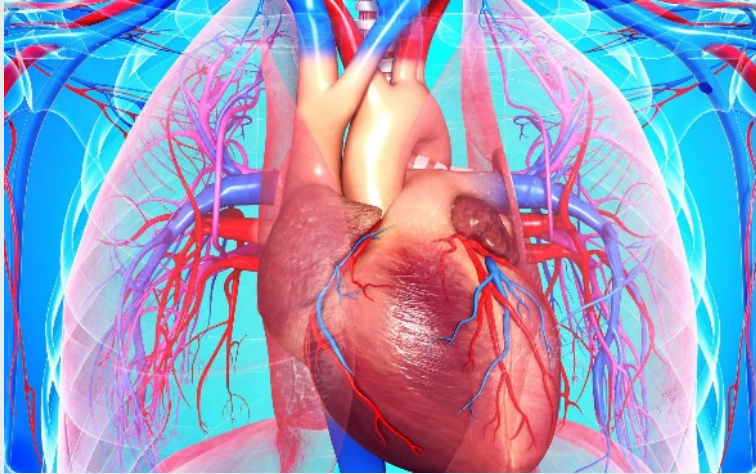
## Ageing





# Year 3 Blocks

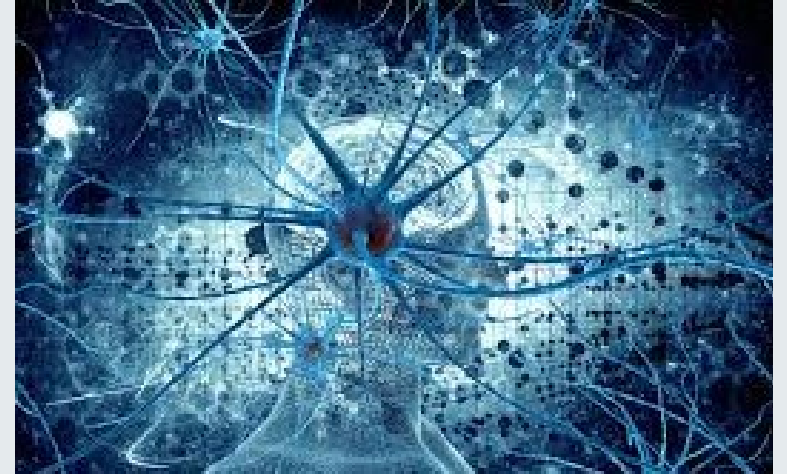
## Cardiovascular



## Trauma and accidents



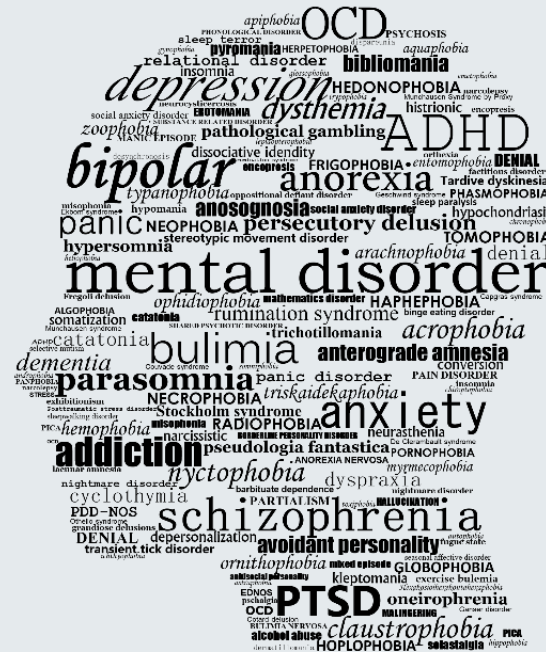
## Cognition, movement and senses



## Cancer and clinical genetics



## Mental health longitudinal placement







## BScs

- Anatomy, Dev & Hu Biology
- Cardiovascular Medicine
- Global Health
- Genetics & Genomics
- ID & Immunotherapy
- Neuroscience
- Pharmacy
- Physiology
- Primary Care

## MScs

- Applied Bioinformatics
- Cardiovascular Research
- Genomic Medicine
- Healthcare Technologies
- Immunology
- MedTech Innovation & Entrepreneurship
- Women and Children's Health



# GKT School of Medical Education

## Clinical placement sites

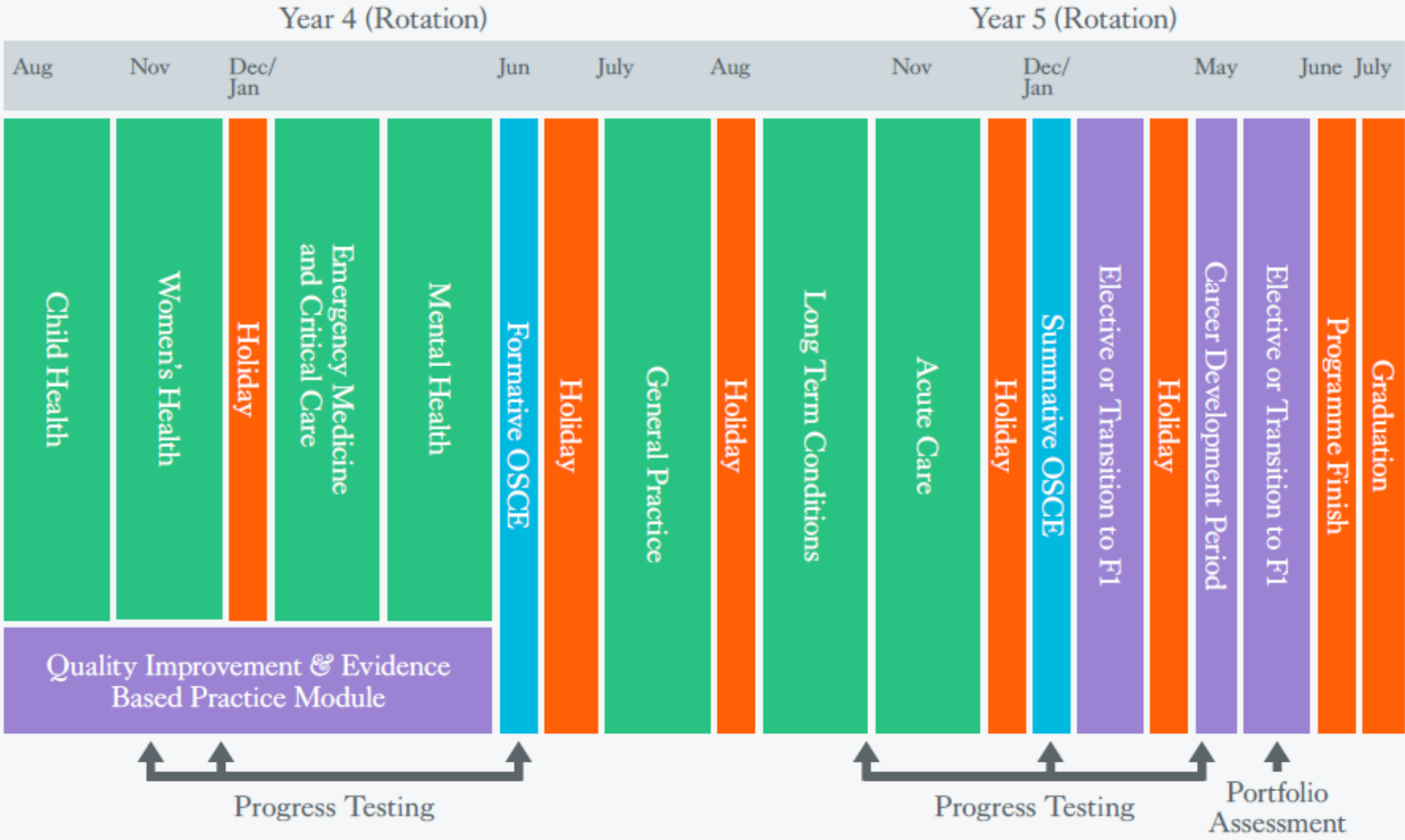


Swindon  
Great Western Hospital



**Kent and Medway NHS and Social Care Partnership Trust**  
**Oxleas NHS Foundation Trust**  
**South London & Maudsley NHS Foundation Trust (SLaM)**  
**King's College London MBBS in partnership with the University of Portsmouth**

# Stage 3





## Global lessons

- Twinned with 18 universities from around world
- Overseas placements Clinical Electives







Chat to  
students  
and staff



Find out more

