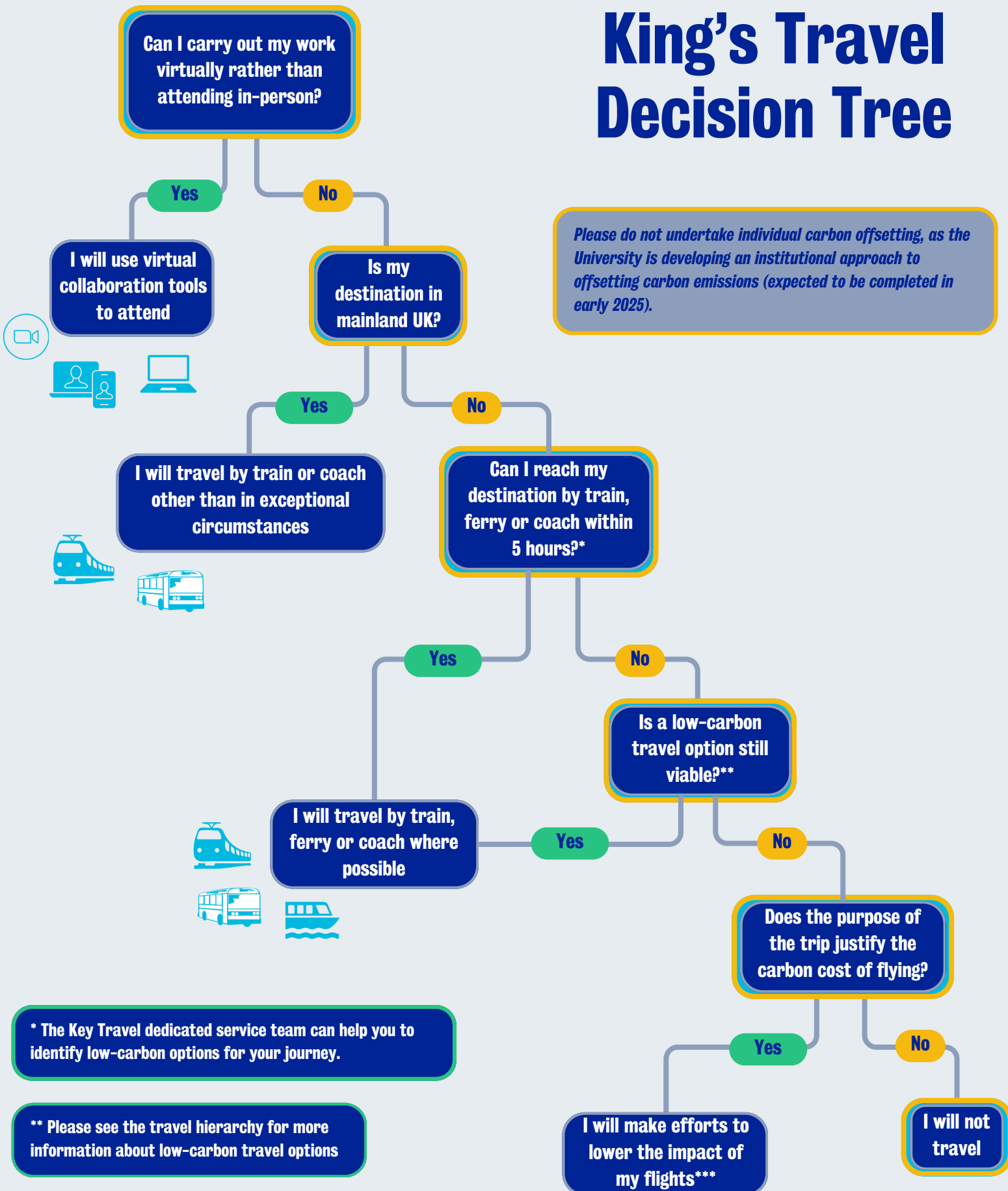


King's Travel Decision Tree



Please do not undertake individual carbon offsetting, as the University is developing an institutional approach to offsetting carbon emissions (expected to be completed in early 2025).

* The Key Travel dedicated service team can help you to identify low-carbon options for your journey.

** Please see the travel hierarchy for more information about low-carbon travel options

*** If you have to fly, lower your impact by:

- Flying economy class only;
- Combining the trip with other work-related activities;
- Using direct flights (without layovers);
- Using land-based travel options at the destinations, where possible