



SUSTAINABLE DEVELOPMENT GOALS

2021–22



Contents

Introduction	1
Methodology	2
Foreword	4
Key Highlights	5
SDG1: NO POVERTY	6
SDG2: ZERO HUNGER	8
SDG3: GOOD HEALTH AND WELLBEING	10
SDG4: QUALITY EDUCATION	12
SDG5: GENDER EQUALITY	14
SDG6: CLEAN WATER AND SANITATION	16
SDG7: AFFORDABLE AND CLEAN ENERGY	18
SDG8: DECENT WORK AND ECONOMIC GROWTH	20
SDG9: INDUSTRY, INNOVATION AND INFRASTRUCTURE	22
SDG10: REDUCED INEQUALITIES	24
SDG11: SUSTAINABLE CITIES AND COMMUNITIES	26
SDG12: RESPONSIBLE CONSUMPTION AND PRODUCTION	28
SDG13: CLIMATE ACTION	30
SDG14: LIFE BELOW WATER	32
SDG15: LIFE ON LAND	34
SDG16: PEACE, JUSTICE AND STRONG INSTITUTIONS	36
SDG17: PARTNERSHIPS FOR THE GOALS	38
Data set	40

Introduction

Contributing to the global effort to build a better world by 2030

Poverty and inequality. Climate change and lack of resources. Crises threatening economies. The solutions to all these issues call for action by countries – developed and developing – in a global partnership. To create change, the 2030 Agenda for Sustainable Development (adopted by United Nations Member States in 2015) defines 17 goals for achieving peace and prosperity for people and planet.

King's is a world-leading university dedicated to finding solutions to urgent global challenges through our teaching, research and collective impact. Our work seeks to align with the United Nations Sustainable Development Goals to support the global effort to build a better world by 2030.

This report showcases some of the diverse ways King's is contributing to achieving the SDGs. From designing study programmes and nurturing the next generation to policy-shaping research and engagement with local communities, discover the university's contribution to society in London, in the UK and the rest of the world.



Methodology

This report aims to provide an overview of King's's contribution towards the UN SDGs. It builds on data from a multitude of sources across the university and covers a wide range of initiatives around King's research, educational offer and operations, as well as its service and engagement activities. It is a collective attempt to demonstrate the breadth and depth of King's impact towards making the world a better place but does not encompass everything that our community of students, staff, alumni and partners achieve. This report covers the academic year 2021-22. Unless otherwise stated, data and case studies will be derived from this timeframe.

DATA ON RESEARCH OUTPUTS

All the data on research outputs has been extracted from public sources. The data on research outputs is mostly based on datasets extracted from scival.com and covers both 2021 and 2022 calendar years. The report includes:

- The number of King's publications for each SDG
- The number of King's publications compared to all UK publications for each SDG
- King's field-weighted citation impact (FWCI) metric, which compares citation of King's publications with citation of all publications worldwide for each

SDG. A baseline of 100 is used here

- The number of internationally co-authored papers for each SDG
- The number of patents citing King's research.

The report includes the number of policy sources that refer to King's SDG-related research between 2021 and 2022 based on a dataset from overton.io and references to King's research outputs in the media (news, social media, etc.) between 2021 and 2022 as extracted from altmetric.com. For some SDGs, additional data might be included. For example, the overall number of papers co-authored with academics from universities in low- and lower-income countries between 2021 and 2022 was also included as a metric for SDG 1.

QUANTITATIVE DATA

Additional quantitative data in the report includes numbers of students, research income and data on King's operations. These metrics were provided by specialist teams across the university. Student numbers are based on figures reported to government bodies. Operational data, including environmental sustainability data, was provided by King's Directorate of Estates & Facilities. Metrics such as water consumption, waste production and energy use are tracked throughout the year and reported annually to the Higher Education Statistics Agency's (HESA) Estates



Management Record (EMR) and included in the university's annual Environmental Sustainability Report. Additional data on spin-offs and research was provided by the King's Research Management & Innovation Directorate.

DATA ON SDG-RELATED MODULES

In line with King's Vision, we strive to equip students with the skills and knowledge needed to build a sustainable future and become the changemakers of today and tomorrow. The Education for Sustainable Development (ESD) framework provides a unique opportunity to deliver on this by giving 'learners of all ages the knowledge, skills, values and

agency to address interconnected global challenges, including climate change, loss of biodiversity, unsustainable use of resources and inequality' (UNESCO). Universities are key players in driving ESD due to our core work in education and our ability to bring people from different disciplines together to develop solutions to today's most complex problems. A King's review was conducted based on a student-led curriculum-mapping exercise and has identified many examples of ESD learning and a broad array of SDGs being taught in each of our faculties and across the informal curriculum. The project updates our previous work on mapping climate and sustainability modules as part of the King's Climate Action Network in 2021-22 and our 2016-

17 audit of modules against the SDGs, which was reported on in our annual Environmental Sustainability Report. Each of the 910 teaching units were assessed based on their relations to the SDGs. A distinction was made between units having a direct relation and indirect relation, depending on whether the unit completely embedded the SDG in the teaching or whether the unit covered the SDG more generally, allowing students to build a basic knowledge around the SDG. The number and proportion of units relating to each SDG is based on data from this audit. Cross-analysis with student records then gave a view of the number of student engagements with each SDG. Student engagement numbers do not equal student numbers as each student can engage with SDGs

through several different modules.

CASE STUDIES

Case studies were compiled from specialist teams across the university. A review of relevant university webpages, news outputs and data submitted to world rankings and assessment frameworks was conducted to complete the datasets. This report aims to provide an overview of King's contribution towards the SDGs. There are many more examples and case studies that have not been included. More examples of our engagement with the SDGs can be found on our SDG Hub.



Foreword

For nearly two centuries, King's has been dedicated to leveraging our resources and capabilities to build a better world for all. Today, in the face of unprecedented global challenges, it is our collective responsibility to design the technology, systems and knowledge that will ensure a sustainable future for generations to come. Universities play a critical role in this mission, and King's is proud to be leading the way through our research, education and service commitments.

In this spirit, I am proud to present our Sustainable Development Report for 2021-22, which offers a comprehensive account of the strides we have made towards advancing the United Nations Sustainable Development Goals throughout the University.

Our research delivers a wealth of valuable insights, data and analyses, equipping policymakers with the information to make decisions that serve the greater good. Through our multidisciplinary educational approach, we arm our students with the tools to confront existential challenges, instilling in them a drive for justice and social progress. Furthermore, our commitment to environmental and social sustainability is evident in our service-led research and educational initiatives, which aim to transform knowledge into tangible outcomes that improve the welfare of the planet and its inhabitants. This commitment extends to our operational procedures,



where our steadfast focus on sustainability ensures that our practices align with our broader mission. Finally, our community engagement projects and international partnerships solidify our impact on a local, national and global scale.

With the strength of King's community and beyond the confines of the University, we are united in effecting meaningful change and ensuring a sustainable future for all.

Thank you.

Professor Shitij Kapur
Vice-Chancellor & President

'King's embraces a steadfast commitment to collaboration with both our local and global partners to ensure we are addressing the UN Sustainable Development Goals through tangible social impact. We believe that the input and expertise of diverse communities will lead to meaningful progress on these essential global objectives.'

Professor 'Funmi Olofinfemi - Vice President (International, Engagement & Service)

'Complex problems require collaborative solutions, and to address these monumental challenges at pace, it's critical that we work together across traditional disciplines and polarised perspectives. King's is creating interdisciplinary initiatives in research, education and service which amplify our impact and progress against the UN Sustainable Development Goals.'

Professor Rachel Mills - Senior Vice President (Academic)

'This report highlights just some of the fantastic projects and activities by the King's community contributing to building a better society. Through our new transformative initiative, King's Climate & Sustainability, we are seeking to embed sustainability into everything we do, enabling a fundamental shift in our education, research and operations, while informing and enabling transitions to sustainability in London, the UK and internationally.'

Professor Frans Berkhout - Assistant Principal (King's Climate & Sustainability)

Key highlights

TIMES HIGHER EDUCATION IMPACT RANKINGS

2022

5th

in the UK
5th in Europe
24th in the world

2021

2nd

in the UK
4th in Europe
11th in the world



King's published

26,029 papers

representing 5.3% of the UK's research

10,706

papers directly related to the SDGs (41% of King's research output)



6,278,939

public visitors to our outdoor exhibitions



14

Nobel Laureates

£273m

annual research income

6th

in the UK for **research 'power'** (2021 Research Excellence Framework)



King's has received several awards for its **commitment to equal rights:**

King's received an **institutional Athena Swan Silver Award** and 9 Athena SWAN Bronze Awards and 6 Athena SWAN Silver Awards at departmental and faculty level

King's is a **Living Wage Employer**

14th

on Stonewall **Top 100 Employer** list

Workplace Equality Index Gold Award

Bronze Race Equality Award



910

teaching units related to the SDGs were delivered to students.

260,443

student engagements with units relating to SDGs



King's fully **divested from all fossil fuels** almost two years ahead of schedule

Scope 1 and 2 emissions reduced by

53%

from 2005-06 to 2021



SDG1: NO POVERTY

End poverty in all its forms everywhere

RESEARCH

205 publications

56% of the papers relating to SDG1 were internationally co-authored (115 papers)

which represents **4.97%** of the publications in the UK

1,686 citations

497 mentions of King's research in the media

50 policies citing King's research

7 patents citing King's research

6% of King's publications are co-authored with academics from universities in low- and lower-income countries, 1,563 papers across the SDGs



RESEARCH

Poverty, Inequality & Inclusive Growth research group

What makes growth more equitable? How can poverty be ended? This group studies the paradox of persistent poverty and inequality in emerging economies. One academic has looked at the impact of COVID-19 on global poverty. A PhD student has been awarded King's Outstanding Thesis prize for comparisons between living standards in emerging economies – published by Cambridge University Press. And we explore

how wealth could be distributed more evenly around the world in our podcast *WORLD: we got this*.

Academics warn of over-optimism around global poverty estimates

In *Third World Quarterly*, King's researchers explain that there is a political economy of over-optimism when measuring global poverty. The emphasis has been on moving people away from extreme poverty which makes international agencies seem more successful. The team also found that only about one third of the data used is from real surveys.

EDUCATION

Study programmes

Poverty is multifaceted – and is an area of study we've developed more programmes around. Several departments at King's have built up expertise that delves deep into this. Modules include Introduction to Development Studies, Political Economy of Inequality, and Poverty, Inequality and Social Policy in Emerging Economies.

EDUCATION

170 teaching units related to SDG1 42 directly, 128 indirectly

13,972 student engagements with units relating to SDG1 22% of total student engagement

6,340 students received financial support 17.65% of the student body

VENTURES

6 ventures supported by King's Entrepreneurship Institute

Interrogating Development and Development in Action seminar series

The Department of International Development has developed two seminar series showcasing development in action and social development of emerging economies. Academic and policy-oriented experts discuss real-world development analysis, policy formulation and advocacy. They examine some of the most pressing issues facing society today. And they explore research methodologies, project management, and how to bring about change.

OPERATIONS

King's scholarships, hardship funds and cost of living support

Scholarships, bursaries and hardships funds are available at all levels of study, some directly targeting underrepresented groups. With the rising cost of living, we have strengthened our services, offering extra financial support, practical tips and specialist money advice.



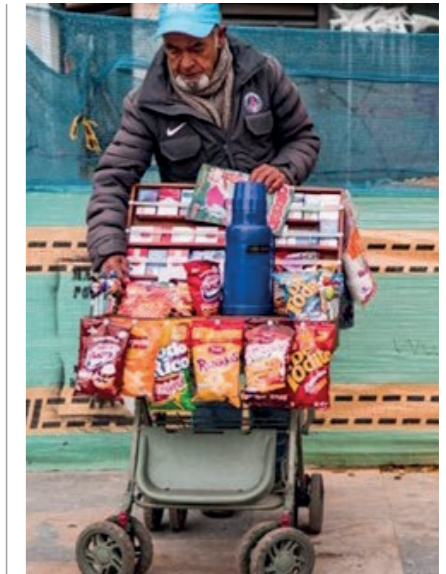
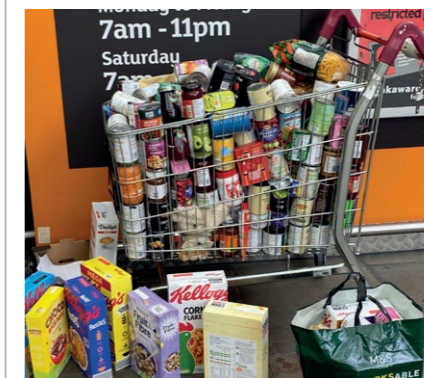
Money Mentors

Money Mentors are King's students who have a passion for helping their peers become money savvy. The Advice & Guidance Team and external partners train them on the main sources of statutory funding, money management skills, student discounts, hardship funds and financial safety online. They offer guidance on how to budget, where to get the best discounts and deals in London, how to save money and where to get help if needed. A money management workshop – *Pathway to Financial Wellbeing* – is also available.

SERVICE AND ENGAGEMENT

KCL On The Streets

KCL On The Streets is a student-led homelessness action society. They help London's homeless community through outreach sessions and fundraising events. The last few years have seen a dramatic increase in the profile and impact of the group. Events have included a Café from Crisis social and 'Project Santa', which sees students distributing hot chocolate, warm clothes and small gifts in Christmas bundles.



Legal clinic students help homeless Roma apply for legal residence

The Roma Community are often discriminated against. Students from King's Legal Clinic have taken part in a pilot project supporting homeless people from the Roma Community. The Roma Support Hub has backing from human rights law firm Deighton Pierce Glynn (DPG), European citizens' rights organisation AIRE Centre, Caritas Westminster, and King's Legal Clinic (Human Rights and Environment Clinic). The King's students help participants apply for legal immigration status so they can access the essential services they need.



SDG2: ZERO HUNGER

End hunger, achieve food security and improved nutrition and promote sustainable agriculture

RESEARCH

157 publications

74% of the papers relating to SDG2 were internationally co-authored (116 papers)

which represents 2.48% of the publications in the UK

1,588 citations
1,705 mentions of King's research in the media

98 policies citing King's research

6 patents citing King's research

RESEARCH

Population Health & Nutrition Research Group

The Population Health & Nutrition research group carries out a range of observational and interventional studies in the UK, Africa, Latin America and the Caribbean. The group explores disparities in health and access to health care relating to nutrition. Past projects have looked at the relation between disability and food bank use in the UK, and the operational characteristics of independent food parcel provision.

Towards a world without food insecurity

In a world where one third of food produced is wasted, no one should be going hungry or without proper nutrition. But the uncomfortable truth is that this is happening around the world – from Afghanistan to

Zimbabwe. An interdisciplinary King's engineering research team is improving the resilience of our food systems and engineering sustainable food sources. A key goal is to ensure that the UK plays its role in improving food systems.

EDUCATION

Study programmes

With strong expertise in the health sector, dietetics and nutritional sciences, King's addresses zero-hunger across many areas of the curriculum. The Department of International Development and the Department of Political Economy have several modules addressing the topic. And the Dietetics study programme aims to equip BSc and MSc Nutrition graduates with the knowledge, skills and attitude required to practise as an accredited and registered dietitian.



EDUCATION

118 teaching units related to SDG2
27 directly, 91 indirectly

6,520 student engagements with units relating to SDG2 12% of total student engagement

VENTURES

3 ventures supported by King's Entrepreneurship Institute

Fairtrade accredited university (two stars)

King's has been elected by PETA as one of the Most Vegan-Friendly Universities in the UK

Open-access seminar on the need for food systems change

In March 2022, King's ran a seminar on how to transform food systems to benefit people and planet. The event brought together four inspiring speakers: the CEO of Global Resilience Partnership, Executive Director at Bangladesh Resource Center for Indigenous Knowledge, Global Youth Campaigns Coordinator at GAIN Health, and Food Wave campaign lead at ReLondon.

OPERATIONS

University commitment to affordable, sustainable and healthy food

King's Sustainable Food Policy ensures we monitor the impact of our catering and hospitality operations, while providing healthy and sustainable food for all. We source from local and independent suppliers, remove palm oil and redistribute unsold food where possible. We opened one of the first fully plant-based University cafes in the UK. King's received three stars and an 80% score in the Sustainability Restaurant Association's 2022 'Food Made Good' report. We also offer discounts and deals to combat the cost of living crisis.

Reducing and managing food waste on campus

King's Food is committed to tackling food waste through its 50@50 initiative. Selected food products nearing expiry date are reduced to clear and marked with



a 50% discount 50 minutes before closing time in the cafes. In 2021, King's Food also partnered with the Too Good To Go app to reduce food waste. In two years we saved approximately 2,905 items of food from being wasted, reducing CO₂e by 7.26 tonnes. Any food that is wasted is sent to an anaerobic digestion plant to be broken down into gas that can produce electricity.

SERVICE AND ENGAGEMENT

Global Affairs students secure funding to support zero hunger

In King's Civic Challenge, a team of King's staff and students developed creative solutions to meet the needs of their local London community. The collaboration won the community resilience award, along with funding to bring their ideas to life. Now, Café Crypt at Inspire tackles poverty and food insecurity by providing affordable, healthy meals for

vulnerable local communities, while educating young people and parents on good nutrition.

King's students and staff lend a hand at a foodbank

Each year in March, students, staff, and alumni volunteer across the world for King's Global Day of Service. In 2022, the King's ethos of serving society was stronger than ever with 575 members of the King's community contributing over 2,900 volunteering hours across 32 countries. For example, King's students and staff helped at a London foodbank, bringing positive impact to the local community.



3 GOOD HEALTH AND WELL-BEING

SDG3: GOOD HEALTH AND WELL-BEING

Ensure healthy lives and promote well-being for all at all ages

RESEARCH

6,945 publications

64% of the papers relating to SDG3 were internationally co-authored (4,469 papers)

which represents **8.27%** of the publications in the UK

119,348 citations

169,148 mentions of King's research in the media

2,452 policies citing King's research

1,181 patents citing King's research



RESEARCH

Student Mental Health Research Network (SMaRteN)

SMaRteN is a national research network funded by UK Research and Innovation and based in the Institute of Psychiatry, Psychology & Neuroscience at King's. It is responding to increases in the levels of mental health distress within the UK population. SMaRteN has been working to understand and improve student mental health in higher education, working directly with the students themselves.

Fellowships in psychiatry, psychology and neuroscience

Five researchers at the Institute of Psychiatry, Psychology & Neuroscience received Fellowship awards for projects including mental health and domestic abuse, problematic alcohol or drug use, and disordered gambling. The funding will support them to make a difference to mental health services, for example,

improving the response of mental health services to domestic abuse victims or improving access to addiction treatment in the homeless community.

EDUCATION

Study programmes

With four faculties dedicated to health, King's offers a range of opportunities to have an impact in the sector. Our GKT School of Medical Education supports medical graduates to become leaders in service quality improvement. The Faculty of Dentistry, Oral & Craniofacial Sciences hosts the largest oral health faculty in Europe, rated in the top 10 in the world for dentistry. The Department of Global Health & Social Medicine provides students with tools to shape policies and healthcare delivery systems. And our Institute of Psychiatry, Psychology & Neuroscience develops students' clinical skills to contribute effectively to psychological services.

EDUCATION

23,431 student engagements with units relating to SDG3 42% of total student engagement

353 teaching units related to SDG3
119 directly, 234 indirectly

4,265 graduates in health disciplines 29.5% of graduates from health

VENTURES

47 ventures supported by King's Entrepreneurship Institute

Health workforce innovation and training

In 2021-22, the King's Health Partners Education Academy achieved 947 attendees at the Primary Care Webinar series and a 150% increase in the number of new online courses offered. The annual KHP Summer School also took place for the second year. This gave year 11 students attending schools in Southwark, Lambeth and Lewisham insights into careers within clinical research. We've celebrated staff achievements in healthcare, clinical academic work and innovation through various awards.

OPERATIONS

Promoting health and wellbeing through services and sport

King's operates five gyms and two sports grounds across London. With the ambition to make King's the most active university in London, King's Sport & Wellness has engaged more than 15,000 people across various programmes. King's Move allows community members to win points for being active and redeem

these for rewards. The BeActive programme organised social sports. And the Active Wellness Scheme improves mental health through exercise. King's provides all staff with wellbeing days, as well as access to our Employee Assistance Programme, which offers free confidential counselling and advice. For students, King's offers a Pyramid of Support with five levels of support services.

King's is among the first universities to join Student Minds' University Mental Health Charter

The charter was developed by the UK's student mental health charity, Student Minds – founded by Dr Nicola Byrom, Senior Lecturer in Psychology at King's. The charter provides a set of principles to help universities strengthen wellbeing support for students and staff in the wake of the COVID-19 pandemic. It suggests proactive interventions to create an environment that promotes positive mental health and wellbeing. An example at King's is the Positive Peers initiative, a peer-to-peer approach that celebrates the wellbeing of students at King's.



SERVICE AND ENGAGEMENT

King's Health Partners

King's Health Partners brings together three leading NHS foundation trusts and King's. A new report covering recent impact across various programmes demonstrates progress on the group's five-year plan. It shows how they are adopting and spreading integrated mental and physical healthcare approaches, and how they're going further and faster across their programmes.

King's joins network to support student mental health

King's joined a consortium assembled by the Office for Students (OfS) to help universities identify and make use of effective practice in supporting student mental health. The funding from the OfS allows King's to support student mental health and explore what works best. We discovered that students who experienced a difficult time through the pandemic needed extra support – as well as the right mental health care after education returned to normal.

4 QUALITY EDUCATION



SDG4: QUALITY EDUCATION

Ensure inclusive and equitable quality education and promote lifelong learning opportunities for all

RESEARCH

330 publications

74% of the papers relating to SDG4 were internationally co-authored (167 papers)

which represents **4.11%** of the publications in the UK

1,955 citations

3,901 mentions of King's research in the media

286 policies citing King's research



RESEARCH

King's International Education Research Network

KIERN brings together academics, researchers, and research students across and beyond King's to discuss critical questions about international education. This is achieved through an annual network meeting, a lecture series and PhD programme. The network is based in the School of Education, Communication & Society, which is at the forefront of global research agendas in international education and runs a successful programme in International Education.

Centre for Research in Education in Science, Technology, Engineering & Mathematics (CRESTEM)

CRESTEM researchers explore teaching, learning and engagement in diverse contexts to improve STEM

education. The group has led several projects, including the COM 'n' PLAY Science Project which aimed to better understand the ways in which young people learn when they participate in informal activities. A computing project examines female performance and participation in secondary school-level computing, with a particular focus on computer science exams.

EDUCATION

School of Education, Communication & Society (ECS)

King's has been training teachers for more than 120 years. ECS has been at the forefront of teacher education and research for over 40 years. The school's programmes help professionals analyse research and respond to changes in thinking and policy. It also provides an initial teacher training programme leading

EDUCATION

238 teaching units related to SDG4
33 directly, 205 indirectly

17,055 student engagements with units relating to SDG4
31% of total student engagement

81% student satisfaction in the Postgraduate Taught Experience Survey
71% of student satisfaction in the National Student Survey

3,987 first-generation students started a degree at King's

VENTURES

28 ventures supported by King's Entrepreneurship Institute

to qualified teacher status. There are ongoing research projects in areas such as girls' participation in computer science, linguistic analysis of Arabic and English natural conversation, and young people's education-to-work transitions.

King's lecturer wins award for outstanding impact on student outcomes

Dr Russell Hearn has been recognised by the National Teaching Fellowship Scheme for his contribution towards student outcomes and the teaching profession. The award reflects the unique learning opportunities he created for healthcare students to be part of the national response to the COVID-19 pandemic. The innovations he has led in undergraduate and postgraduate education over the past decade have led to national and international impact.

OPERATIONS

Access to libraries and bibliographic resources

King's manages six libraries with over 1.2 million printed books and eBooks, and more than 60,000 journals, reference tools, statistical data, official publications, maps, music scores, multimedia resources, photographs and manuscripts. Every resource is free to students, staff and visitors from the UK and around the world. The King's Foyle Special Collections Library holds more than 200,000 items from the 15th century to the present day. These collections offer a wealth of opportunities for teaching and research, and form part of our documentary heritage.

Civic Leadership Academy

The Civic Leadership Academy (CLA) is a nine-month programme developed in partnership with Citizens UK and local charities to address the barriers underrepresented students face. Students have access to opportunities that support their personal development and future. King's Civic Scholars each receive a £3,291 bursary, gain 240 hours of front-line experience working with a community organisation and receive 60 hours of training and development.

SERVICE AND ENGAGEMENT

King's climbs to fifth place in social mobility index for universities

The English Social Mobility Index for 2022 listed King's as the fifth best university in the country for social mobility. We rose four places from the previous year. The index looks at the number of students from disadvantaged backgrounds and how those students progress after

university. Our result recognises the hard work of so many people across the university who are supporting students from underrepresented backgrounds, helping them thrive during their studies and beyond. In partnership with Lambeth Citizens, King's developed key recommendations for Lambeth Council to help support social mobility for young people within the borough.

Transforming Access and Student Outcomes in Higher Education (TASO)

Eliminating gaps in higher education, the independent hub TASO, allows HE professionals to access research, toolkits and evaluation guidance as they work towards equality. TASO and King's are also working to reduce equality gaps for women and girls, and address underrepresentation of ethnic minority students in postgraduate research. The project was set up by King's, Nottingham Trent University and the Behavioural Insights Team with funding from the Office for Students. On top of this, King's arranges a multitude of events that promote lifelong learning across many areas – hosting conferences, public lectures, workshops and more.





SDG5: GENDER EQUALITY

Achieve gender equality and empower all women and girls

RESEARCH

342 publications

51% of the papers relating to SDG5 were internationally co-authored (173 papers)

which represents **4.97%** of the publications in the UK

2,063 citations

294 mentions of King's research in the media

147 policies citing King's research

15 patents citing King's research

RESEARCH

Global Institute for Women's Leadership

King's believes in a world where all women have equal access to leadership. To achieve this, the university is breaking down barriers and reimagining what leadership looks like. The Institute brings together research, practice and advocacy to unravel the diverse issues around gender equality. Researchers have analysed gender pay gap reporting systems, uncovered the gendered impacts of the COVID-19 pandemic and shaped the conversation on why women will decide the next election.



Section of Women's Mental Health

Alongside running vital mental health services, the Section of Women's Mental Health research group investigates the causes of illness and the needs of women. Their work contributes to policymaking and healthcare practice, nationally and internationally. For example, King's has helped voice the experiences of those with perinatal mental illness and provided the evidence needed

to secure funding for better care and resources.

EDUCATION

Study programmes

Gender equality is embedded in many degrees, offering modules on gender and sexuality. Modules include Gender and Development in the Global South which introduces students to the geography of gender roles, relations and identities. Critically Queer provides a broad overview of the diverse critical discourses around queer theories, while also exploring pressing debates in the field. Media, Gender and Culture is a short course which is a Summer School module where students examine issues such as power and representation, culture and agency, and intimacy and mediation.

Building Gender-Inclusive Workplaces programme

Creating gender-inclusive workplaces is vital to eliminating the gender pay gap and retaining top talent. This new executive programme, delivered by King's Business School, is designed to give business leaders the tools



EDUCATION

240 teaching units related to SDG5
59 directly, 181 indirectly

18,090 student engagements with units relating to SDG5
33% of total student engagement

King's received an institutional Athena Swan Silver Award

24.7% of women starting a degree were first-generation students

25 ventures supported by King's Entrepreneurship Institute

VENTURES

to improve gender inclusion within their organisations. Participants look beyond tick-box diversity initiatives or those that aim to 'fix the women'. Instead, King's provides evidence-based tools to create real cultural and structural change while looking at how we can reduce bias in systems. Completing four modules, participants learn how to avoid the common mistakes organisations make, promote gender inclusivity and embed change.

OPERATIONS

Support to parents and carers

King's has a range of policies and programmes in place, from flexible working and enhanced statutory leave to financial support and King's Parents' Hub & Employee Assistance programme. There are six Parenting Rooms across the campuses and staff have access to discounted childcare. Staff can apply for places at nurseries run by the university's NHS partners. The Carers' Career Development Fund and Parents' & Carers' Fund are schemes for staff designed to reduce the impact that career breaks have on career progression and help with care costs incurred as a result of attending conferences or other events. NEST is a network which also supports staff with parental or caring responsibilities through events, an online community and representation at a strategic level.

Gender equality networks

Only one in three UK entrepreneurs is female. The Women Entrepreneurs Network found this gap was also reflected in King's data, so the group have been working towards achieving gender parity across King's Entrepreneurship Institute's activities. But they're not the only network fighting for gender equality. For example, Elevate provides a platform for professional services staff at King's, and Womxn in STEM works to represent women, non-binary and LGBTQ+ scientists. Gender Studies at King's is a network bringing together scholars and students whose research and teaching examine the influence of gender relations. It is responsible for a range of projects and activities, including the Gender, Justice and Memory project, which explores ways in which post-conflict remembering can contribute to harmful gender norms.

SERVICE AND ENGAGEMENT

The Women in Science Scholarship

There is a striking imbalance of women working in STEM. King's Faculty of Natural, Mathematical & Engineering Sciences is addressing this problem head-on with scholarships worth £3,000. Outstanding candidates will benefit from financial assistance during their undergraduate studies and be invited to take part in activities across the university. Scholarship holders are also encouraged to become



a Women in Science Champion, support engagement events and help promote programmes like the Gender Equality Student Fund.

The Haven

Provided by King's College Hospital NHS Foundation Trust, The Haven is a network of three specialist sexual assault referral centres, covering the whole of London. The teams help victims of rape or sexual assault by providing advice, counselling, and emergency and follow-up medical care. Forensic examinations to collect evidence can also be carried out by specially trained examiners. Victims can call 24 hours a day, seven days a week, for an initial assessment. The services are available to everyone, whatever their age, gender or sexual orientation. The Haven can also arrange an informal discussion with specially trained police officers to help victims decide whether to formally report the assault.

6 CLEAN WATER AND SANITATION



SDG6: CLEAN WATER AND SANITISATION

Ensure availability and sustainable management of water and sanitation for all

RESEARCH

101 publications

71% of the papers relating to SDG6 were internationally co-authored (72 papers)

which represents **1.89%** of the publications in the UK

1,171 citations

64 mentions of King's research in the media

67 policies citing King's research

1 patent citing King's research



RESEARCH

Working towards a just and sustainable water future

A changing climate is causing many new issues for water governance. The King's Water Centre works to incubate, elevate, and empower the best science and innovation to tackle the world's water problems. This curiosity-driven, interdisciplinary, solutions-focused group brings together social and physical scientists to help tackle these challenges at both a local and global scale. Working alongside global partner PLuS Alliance, the centre is involved in many research and educational projects, including the Environmental Humanities Network.

Report discovers increasing numbers of residents without piped water

A new report by King's has found an increase in households without piped

running water in some of America's wealthiest and fastest-growing cities. These cities include San Francisco, Portland, Austin, Nashville, and Seattle. King's Department of Geography researchers have called on the US government to take action to tackle the injustices of the current situation – with the infrastructure costs being outweighed by the gains in health, safety and quality of life.

EDUCATION

Water education modules

King's addresses water education across many areas of the curriculum. Water & Development is a module that explores the relationships between water resources management and sustainable development – covering topics related to the politics of water use. Desert Environments is a module that explores the characteristics of these regions and the environmental

EDUCATION

123 teaching units related to SDG6
25 directly, 98 indirectly

6,514 student engagements with units relating to SDG6
12% of total student engagement

VENTURES

2 ventures supported by King's Entrepreneurship Institute

43 free drinking water dispensers in university buildings

305,992 m³ of water was used in the university

problems found there. Students particularly look at how human activity affects the environment and the techniques that can be used to assess and mitigate them.

Water and the Environmental Humanities: Archives, Narratives, Futures

This King's module examines writers and critics who discuss water in their own writing practices. Students are encouraged to ask how literary and archival examples can be used to rethink today's narratives about water and policy. They also explore questions such as: what kind of critical intervention could literature make in contemporary debates about the environment? And: what kind of role will the archive of the past play in negotiating our future?

OPERATIONS

Water consumption policies and targets

Since 2013, King's has aimed to reduce consumption of water by 2% each year. In 2021-22 there was a reported 10% reduction in water consumption across its campuses compared to 2020-21. Continuous efforts are being made to improve accuracy of water consumption data, allowing better tracking of progress. Through the King's Environmental Sustainability Policy, increasing of water efficiency across the estate is embedded in the university's Sustainability Guidance for Capital Projects. This is alongside a requirement to consider greywater systems such as rainwater collection.



Waterless condensers drastically cutting water usage

Waterless condensers have been installed in chemistry and pharmacy laboratories, saving King's an estimated £3,300 in water costs – or more than 1,500m³ of water per year. This also helps reduce the risk of floods. The initiative supports King's participation in the Laboratory Efficiency Assessment Framework (LEAF), allowing estimates of the impact of actions. It also helps laboratories bring down costs and reduce the impact on the environment.

SERVICE AND ENGAGEMENT

WaterWorld supporting decision-making and policy formulation

Developed jointly by King's and AmbioTEK – a not-for-profit environmental research consultancy – WaterWorld provides improved water security and hydrological ecosystem services. The goal is to test the consequences of water systems in a computer simulation before testing in real life. WaterWorld can also be used to understand

different activities that affect water risk factors, under current conditions and under scenarios for land use, land management and climate change.

Progressive water policy needs to be intrinsically linked to human rights and sustainability

A total of 26% of the global population did not have access to safely managed drinking water in 2020. From this, King's Water Centre launched four policy papers, exploring a just and sustainable water future, and how water policy should be tied to human rights, with everyone having access to clean water. King's Water Centre brought together scholars and practitioners in an event celebrating the cutting-edge water research and innovations at



7 AFFORDABLE AND CLEAN ENERGY



SDG7: AFFORDABLE AND CLEAN ENERGY

Ensure access to affordable, reliable, sustainable and modern energy for all

RESEARCH

191 publications

71% of the papers relating to SDG7 were internationally co-authored (135 papers)

which represents **1.19%** of the publications in the UK

2,308 citations

600 mentions of King's research in the media

62 policies citing King's research

28 patents citing King's research

RESEARCH

King's Environment, Energy & Sustainability group explores energy from the Amazon rainforest

Brazil is at the centre of global debates around sustainability. Almost two-thirds of the Amazon rainforest is in Brazilian territory. King's Environment, Energy & Sustainability research group focuses on Brazil's contributions to global, environmental and energy policies. This includes research into how the rainforest plays a crucial role in absorbing greenhouse gases and the transition to a low-carbon energy matrix, as well as the political economy of Brazil's environmental and energy regimes.

King's researcher leads EPSRC programme grant of £10 million

Professor Anatoly Zayats from King's is leading a team of physicists



and chemists to investigate chemical processes with plasmonic nanostructures. The light-driven energy-conversion research has the potential for wide-reaching applications in energy production, environmental clean-up and the pharmaceutical industry. This is part of the UK Research and Innovation programme grant of £10 million, funded by the Engineering and Physical Sciences Research Council (EPSRC) and industry project partners.

EDUCATION

Study programmes

King's departments of Engineering, Political Economy, and Social Science & Public Policy have built expertise on topics that directly address affordable and clean energy. Modules include Energy and Sustainability, and Energy Generation and Storage. Students also look at the international politics of energy, reducing reliance on fossil fuels to

EDUCATION

94 teaching units related to SDG7
14 directly, 80 indirectly

5,649 student engagements with units relating to SDG7
10% of total student engagement

VENTURES

7 ventures supported by King's Entrepreneurship Institute

Reduced scope 1 and 2 emissions by **53%** from 2005-06 to 2021

109,507 GJ energy from low-carbon sources, 470,491 GJ total energy used per annum

move forward vehicle electrification, and the main contemporary issues related to the energy sector. This is providing students with both the theoretical and technical skills to have an impact in the field.

Geography student wins dissertation award for work on energy efficiency policies

Recent graduate Dara Engelbrekt won the Department of Geography's 'Best Undergraduate Dissertation' award for looking at obstacles that affect energy efficiency policies in the EU. The work involved liaising with the Swedish government to examine their policy documents and gathering a focus group on energy use in Sweden. The final article explored why many Swedish stakeholders from the housing and energy sectors are against the Energy Efficiency Directive, which affects energy metering.

OPERATIONS

Energy-efficient renovation and building

King's recognises the need for a drastic societal shift to combat the growing threat of climate change. Many strategies have been developed to embed sustainability into refurbishments and new builds. These include reducing the environmental impact in King's Environmental Sustainability Policy, core construction principles in King's Sustainability Guidance for Capital Projects and much more. This has resulted in King's achieving BREEAM and SKA accreditations.



New freezers reducing King's carbon footprint

Ultra-low temperature (ULT) freezers are an essential resource in medical science but can use the same amount of energy as the average UK home. King's has over 550 ULT freezers – contributing heavily to King's carbon footprint. In April 2022, King's committed £1m to improve the sustainability of the cold storage and biobanking infrastructure used by the research teams. The King's Freezer Exchange Scheme offers to replace old inefficient freezers with new ultra-efficient models. This work supports a key goal within King's Climate & Sustainability Action Plan for all our laboratories to achieve 100% participation in the Laboratory Efficiency Assessment Framework (LEAF) by 2025.

SERVICE AND ENGAGEMENT

Climate Action Network Energy Champions Scheme

The King's Climate Action Network (CAN) aims to engage students and staff in energy saving at King's, including analysing data and running energy-saving campaigns. CAN



members have also signed up to smaller working groups to start implementing actions, one including the Zero Carbon Estate group. Here, an 'Energy Champions' scheme has been set up to allow students to volunteer on energy projects, such as energy auditing and issue reporting, and receive formal recognition for it. Another action group is 'Travel' – to help identify which business travel is essential and which is not, estimating emissions and promoting slow travel.

Facing up to the global energy crisis

The war in Ukraine has revealed how energy resources are intertwined with political power and international security. And has shown how reliant we still are on fossil fuels to power our daily lives. In an episode on our *WORLD: we got this* podcast series, King's experts in the Faculty of Social Science & Public Policy looked at global energy interdependence and explored the obstacles countries face in transitioning from fossil fuels to renewable energy sources.

8 DECENT WORK AND ECONOMIC GROWTH



SDG8: DECENT WORK AND ECONOMIC GROWTH

Promote sustained, inclusive and sustainable economic growth, full and productive employment and decent work for all

RESEARCH

236
publications

58%
of the papers relating to SDG8 were internationally co-authored (138 papers)

which represents
2.52%
of the publications in the UK

2,220
citations

1,139
mentions of King's research in the media

194
policies citing King's research

95.8%
of staff have contracts of more than 24 months



RESEARCH

Work/Place London future employment project led by King's

A total of 79% of London workers have reported that hybrid working has had a positive impact on them. The Work/Place: London returning project, led by King's Policy Institute and Business School, brings together employers and policy stakeholders to understand how COVID-19 has altered the way Londoners work and what the future of employment looks like. The project is identifying lessons not just for London, but for other international cities and the rest of the UK too.

Contributing to the fight against modern slavery and child labour

King's researchers have contributed to knowledge and policies on modern slavery around the globe.

This includes a senior lecturer at King's IoPPN: Institute of Psychiatry, Psychology & Neuroscience leading a project to establish what successful support for survivors of modern slavery looks like. King's research also helped win a modern slavery case in the UK Supreme Court. Other King's researchers helped develop a new national standard, helping organisations to address the risk of modern slavery in their operations and supply chains.

EDUCATION

Study programmes

Many of King's departments provide our students with insights on topics related to decent work and economic growth. These include the Economics & Policy programme that gives students the tools to analyse economic policymaking. Employment Law gives students an understanding of human rights and

EDUCATION

314
teaching units related to SDG8
63 directly, 251 indirectly

22,858
student engagements with units relating to SDG8
41% of total student engagement

VENTURES

30
ventures supported by King's Entrepreneurship Institute

6th
in the UK for graduate employability
(Times Higher Education's Global Employability University Ranking 2022)

£134,011,300
of equity investment raised in spinout fundraising

European Union law on domestic employment. The Corporate Social Responsibility module then looks at the relationship between business and society through the umbrella concept of corporate social responsibility.

King's Careers & Employability team is enabling students to access opportunities for the future

Through services on the CareerConnect platform the Careers & Employability team help King's students and recent graduates succeed in their career journey. This includes UK and international internships, online resources on the King's Careers Blog and hundreds of careers events. The activities help students discover different sectors, develop awareness of the labour market and improve their applications.

OPERATIONS

Fair employment policies

As part of our commitment to fair employment, King's has established policies and procedures to protect standards of conduct across the

university. These apply to the university's contractors, suppliers and other business partners too. To ensure compliance with ethical and sustainability goals, King's audits its supply chain via a Supplier Assurance Tool and through our partnership with Electronics Watch. King's also has a zero-tolerance approach to modern slavery and is committed to acting ethically and with integrity in all its business dealings. King's is accredited by the Living Wage Foundation, and all employees are paid a wage based on actual living costs for London.

Positive Workplace Initiative

King's launched a programme of activities to strengthen the workplace environment to ensure everyone feels respected, included and able to thrive. Our Positive Workplace Initiative complements the King's Bullying and Harassment Policy by identifying and implementing proactive ways to support the culture change that King's aspires to achieve across the university. This includes making practical and sustainable changes to our systems, processes, symbols and behaviours.



SERVICE AND ENGAGEMENT

King's Business School Consultancy students supporting local businesses

King's Business School Consultancy offers up to 15 enterprises in local boroughs the opportunity to receive business consultancy from students, free of charge. Students support on a range of areas including HR planning, marketing and social media, financial analysis, strategy and business planning, data analysis and organisational behaviour. Assessments show that 100% of clients would recommend King's Consultancy to other small businesses.

Creating full and productive employment and decent work for all

Damian Grimshaw, King's Professor of Employment Studies, recently held a session for the UN's Commission for Social Development. In this he focused on overcoming inequalities and accelerating the recovery from the COVID-19 pandemic. In preparation, he took part in an expert group meeting discussing informal workers and precarious employee groups who were badly affected by the pandemic. They addressed how these groups can be better protected, as well as the right to the minimum wage.

9 INDUSTRY, INNOVATION AND INFRASTRUCTURE



SDG9: INDUSTRY, INNOVATION AND INFRASTRUCTURE

Build resilient infrastructure, promote inclusive and sustainable industrialization and foster innovation

RESEARCH

235
publications

57%
of the papers relating to SDG9 were internationally co-authored (134 papers)

which represents
1.66%
of the publications in the UK

1,492
citations

78
mentions of King's research in the media

9
patents citing King's research

RESEARCH

Innovation research centres, groups and institutes helping to shape the future

Global challenges are emerging every day – and King's is taking an integrated approach to ensure sustainable solutions. King's Manufacturing, Materials & Systems research group have developed new sustainable materials to improve performance and service life – seeking to reduce environmental impact. The Institute for Industrial Strategy is helping shape supply chains, digital transformation and skills development to match the demands of the competitive global marketplace. Other research groups include King's Institute for Artificial Intelligence, and The Engineering and Design Institute's (TEDI's) Global Design Engineering programme allows students to develop skills while designing solutions to global challenges set by industry.

King's academics elected to Fellowship of the Royal Academy of Engineering

Engineers working across the university are finding new ways of solving issues in many spheres of life. Having made significant contributions to engineering design and better health care, two King's engineers – Professor Sebastien Ourselin and Professor Jian Dai – were elected as new Fellows alongside visiting Professor Simon Saunders. Together, they demonstrate the quality, impact and standing of King's Engineering.



EDUCATION

Study programmes

Industry, innovation and infrastructure is an area of study we've developed many programmes around at King's. These include Strategic Entrepreneurship & Innovation, STEM Education, and Engineering with Management. We also offer a module in Industrial Organisation, where students can examine a range of approaches within the field of industrial organisation. All programmes provide students with the opportunity to investigate issues in innovative entrepreneurship, contemporary debates concerning STEM-related education, and knowledge of modern engineering.

King's Entrepreneurship Institute kickstarting student entrepreneurial journeys

The Entrepreneurship Institute supports and nurtures the most innovative and resilient entrepreneurial minds from the King's community, providing them with the skills they need to help imagine and design a better future. This is achieved through events to help kick-start student

EDUCATION

401
teaching units related to SDG9
76 directly, 325 indirectly

27,390

student engagements with units relating to SDG9 50% of total student engagement

VENTURES

26
ventures supported by King's Entrepreneurship Institute

21
university spin-offs in which King's has direct or indirect ownership

entrepreneurial journeys, learning opportunities beyond the curriculum, and idea development groups. The institute also gives student societies the chance to apply for up to £2,000 funding to help launch their ideas. In 2022, 12 King's entrepreneurs were additionally named as semi-finalists in the Mayor Entrepreneur Competition as a result of their ideas to make London cleaner and greener.

OPERATIONS

New home for innovative Engineering teaching

King's has a long and distinguished history in engineering and science, spanning nearly two centuries. With the recent Quadrangle redevelopment, the King's community has gained a new Engineering teaching space to encourage and foster collaboration for both academics and students. The facilities include experimental lab space. It also houses maker spaces fitted with tools and equipment to allow students to move from theory to problem-solving to prototype creation. Additionally, it provides a fabrication lab with heavier equipment for students to build complex projects.

Eduroam network benefiting staff, researchers, students and visitors

The Eduroam network is available for King's staff, students and researchers, which provides free Wi-Fi access to King's community on campuses. The network provides

simple, easy and secure connectivity from thousands of hotspots across the campus – which has allowed King's campus to become a more attractive venue for meetings and conferences for visiting academics and educators. The network also allows students and researchers to move more easily between various countries and locations where they work.

SERVICE AND ENGAGEMENT

King's Digital Lab developing new ways to handle digital research challenges

King's Digital Lab (KDL) is a Research Software Engineering team in King's. The team consists of digital researchers, engineers and data experts who've designed and developed processes that can handle the most common challenges of digital research in the humanities and social sciences. Their innovative work has allowed students to access historical databases, digital editions,

data visualisations and infographics, georeferenced maps and much more.

Strand-Aldwych data springboard supporting information sharing

The Strand-Aldwych data springboard is an innovative data-sharing initiative between King's Informatics researchers and Westminster City Council. It will deliver solutions with local data while also educating stakeholders about the benefits of information sharing. The team have run workshops to discuss how different stakeholders could benefit, how to approach questions of ethics and what legal framework would be most suitable to achieve these goals.



10 REDUCED INEQUALITIES

SDG10: REDUCED INEQUALITIES

Reduce inequality within and among countries

RESEARCH

550 publications

49% of the papers relating to SDG10 were internationally co-authored (271 papers)

which represents **4.82%** of the publications in the UK

4,197 citations

13,709 mentions of King's research in the media

17 policies citing King's research

3 patents citing King's research

14th in the Stonewall Top 100 Employer list

RESEARCH

Tackling health inequalities through King's Health Inequalities Research Network (HERON)

HERON is an international public engagement network led by professors at King's, funded by the Wellcome Trust. It brings together people from local communities and charities, public health researchers and health practitioners to share experiences and understand problems influencing health inequalities. HERON also supports a number of projects that investigate health inequalities. One project is the Tackling Inequalities and Discrimination Experiences in Health Services (TIDES) study, which addresses staff inequalities and a culture of racism embedded in the NHS.

Queer@King's building a positive culture for all

Originally set up to organise the Queer Matters international conference, Queer@King's is a group of Arts & Humanities Faculty researchers committed to being an inclusive collective. The group provides a supportive environment for queerwork within and beyond the university. Each year they run research seminars, public lectures, performances and other events on queer topics. The group also meets monthly to provide the space to discuss readings and screenings.

EDUCATION

Decolonising the curriculum and inclusive teaching

The Decolonising Working Group brings students and academics together to work towards decolonising King's curriculum and teaching. The group supports many events and projects, including the exhibition on Lotus (the magazine of the Afro-Asian Writers' Association) and a toolkit on how Lotus can further the work in the classroom. Decolonise KCL, a King's student society, was set up to challenge the university's structural inequalities by ensuring that the voices of people of colour are heard. The Department of Global Health & Social Medicine have also piloted a new course on decolonising research methods in public health, medicine and global health.

Cultural competency increasing positive relations across King's

King's aims to view the world through the lens of other people in all their diversity. The Cultural Competency Unit (CCU) was established in 2021 as part of the University's



EDUCATION

23,785 student engagements with units relating to SDG10 43% of total student engagement

334 teaching units related to SDG10
105 directly, 229 indirectly

24.6% of students are the first in their immediate family to gain a degree

VENTURES

35 ventures supported by King's Entrepreneurship Institute

Race Equality Charter Bronze Award

Internationalisation Strategy, within which cultural competency is one of the two core values at King's. The Cultural Competency Kickstarter has additionally been set up as an online experience for King's staff and students – empowering everyone to reflect on how they relate to and communicate with others.

OPERATIONS

University governance on equality and discrimination

King's has many initiatives to address structural inequalities. Employment at King's is guided by an overarching Equality, Diversity & Inclusion (EDI) Policy, and an EDI Action Plan assists its implementation. The university has also developed a set of supporting policies, including a Disability Policy, a Menopause & Menstruation Policy and a Trans Equality Statement and Procedures. Each year, King's EDI team publishes an annual report outlining current activity related to the Public Sector Equality Duty and, where gaps exist, showing how the university aims to address them.

Progressing pay equality

The gender pay gap at King's decreased from 2017 to 2021 by 4.7%. However, there was a slight increase in 2022, showing King's that there's still more to do to sustain this change. The ethnicity pay gap decreased from 19.9% in 2020 to 17.9% in 2022 – and we are continuing to address the remaining gap. Additionally, King's now has the highest proportion of senior female academic staff within the Russell



Group according to the latest Higher Education Statistics Agency data.

SERVICE AND ENGAGEMENT

Widening participation through King's partnerships and networks

King's recognises that opportunities, aspirations and chances to succeed are not distributed fairly across society – and is dedicated to improving access for Black and Afro-Caribbean students. The university works closely with Amos Bursary to host 120 of its bursary recipients and associates. We've also partnered with the Cowrie Scholarship Foundation to offer three-year scholarships for Black African and Caribbean heritage applicants. The Aspire network works with King's African and Caribbean Society to run mentoring, academic and careers-based events on campus. King's has additionally set up Parent Power and Empoderando Familias – groups for parents and carers pushing for social and educational change in their community. Their work has been



covered by the BBC and won The Guardian's social and community impact award.

King's Sanctuary Programme supporting displaced students

Many young adults have had their education and/or research disrupted due to being displaced. That's why we created the King's Sanctuary Programme – creating positive opportunities for those people to thrive again in higher education. King's is additionally supporting City of Sanctuary and has signed the national organisational pledge, welcoming people to the UK who have been forced to flee their country. King's also partners with Citizens UK, helping to host displaced Ukrainians, and is awarding scholarships to forced migrants from 2023. The King's Refugee Sponsorship Scheme, in partnership with Citizens UK, the Home Office and the UN Refugee Agency, has enabled community organisations to support refugees in settling into their local area.

11 SUSTAINABLE CITIES AND COMMUNITIES



SDG11: SUSTAINABLE CITIES AND COMMUNITIES

Make cities and human settlements inclusive, safe, resilient and sustainable

RESEARCH

263 publications

64% of the papers relating to SDG11 were internationally co-authored (168 papers)

which represents **2.5%** of the publications in the UK

2,757 citations

804 mentions of King's research in the media

45 policies citing King's research

1 patent citing King's research



RESEARCH

Urban research groups

King's has a number of urban research groups addressing some of the most important challenges facing cities today. Urban Futures Research Group examines how visions of urban futures in planning, governance, citizenship and everyday life are being imagined, contested and lived in by people across the world. Urbanisation, Rural Development and Social Transformations Research Group looks at rural development and social transformations across Asia, Africa and Latin America. This work is helping develop future networks, grant proposals and long-term collaborative projects.

Centre for Urban Science and Progress (CUSP) London

More than 70% of the world's population will live in urban areas by 2050. The Centre is a collaboration

between King's and New York University, directed by King's Professor Nick Holliman. Hosted in the Department of Informatics, CUSP London is using data science and visual analytics to address challenges facing communities in the city and beyond. The centre was involved in the Strand Aldwych redevelopment and is signed up to the London Data Charter which uses data to improve Londoners' lives.

EDUCATION

Study programmes

King's offers two master's degrees focused on creating a more sustainable future. MSc Sustainable Cities focuses on the way urban knowledge can help produce more socially and environmentally sustainable cities, while MSc Risk Analysis, Disasters and Resilience explores environmental, technological and social risk and

EDUCATION

223 teaching units related to SDG11
40 directly, 183 indirectly

14,352

student engagements with units relating to SDG11 26% of total student engagement

VENTURES

21 ventures supported by King's Entrepreneurship Institute

£21,267,163 spent on arts and heritage in 2021-22

disaster. Students learn to manage and communicate these risks across a wide range of contexts. Urban Ecology is a module that focuses on areas such as hydrology, river restoration and pollution. As part of the teaching, students are given the opportunity to visit urban river sites in London.

London as a living classroom

King's education strategy integrates London into the learning experience, making the city a living classroom for students. Partnerships with local boroughs and organisations across the capital are a distinctive feature of King's education. These collaborations give students the best possible opportunities and connections that will support them throughout their careers. At the same time, the students offer partners across the capital new insights and perspectives on their challenges.

OPERATIONS

Transformed Strand Aldwych redevelopment officially opened

The £22m three-year redevelopment led by Westminster City Council has created a green space measuring more than 7,000m² – the size of a football pitch – for King's students, staff and the community to enjoy. By pedestrianising space between Bush House, Somerset House and the Strand Building, traffic noise levels have also been reduced by a quarter. This new 'creative thinking quarter' will benefit from the long-established cultural and learning

stature of the area, with a programme of educational and creative commissions on display throughout the year. Part of the launch included the Visible Skin outdoor exhibition, which showcased the work of artist Peter Brathwaite in collaboration with King's Renaissance Skin. This five-year research project studied the ways in which skin was conceptualised and used in Europe between 1450 and 1700.

Promoting sustainable travel

King's has policies to reduce emissions and air pollution around its campuses. To encourage cycling, there are secure bike storage facilities, with many containing bike repair stands, as well as 639 cycling parking spaces. Staff can also benefit from the cycle-to-work scheme. The university has moved closer towards the procuring of electric vehicles, and charging points are now available. As part of King's travel policies, staff must also consider the sustainability of travel included in their role and alternatives such as online meetings. Staff can now take more expensive land-based travel modes, rather than using the cheapest mode of travel.



SERVICE AND ENGAGEMENT

King's connected venues and cultural events

From exhibitions exploring topics like AI to workshops encouraging creativity, King's Culture organises events and programmes that support the needs of faculties and students. King's Artists also brings together artists and academics to engage with communities and the public using different media. Dr George Adamson, Senior Lecturer in Geography, worked with artist Inés Cámara Leret to create the Weather the Weather installation for the 2022 Green Man festival.

Science Gallery London: King's flagship public space

Science Gallery London is a place to grow new ideas across art, science and health. The Gallery brings together a rare breadth of perspectives to shape and share a programme of exhibitions, events, performances, live experiments, open discussions and festivals. Entry to all exhibitions and events is free for the community.



12 RESPONSIBLE CONSUMPTION AND PRODUCTION



SDG12: RESPONSIBLE CONSUMPTION AND PRODUCTION

Ensure sustainable consumption and production patterns

RESEARCH

98

publications



61%

of the papers relating to SDG12 were internationally co-authored (60 papers)

which represents

1.33%

of the publications in the UK



1,142 citations

50

mentions of King's research in the media



1

patent citing King's research



RESEARCH

King's Business School hosts forum on reimagining marketing strategy

Marketing academics are focusing on consumer ethics and loyalty, tackling paradoxes between consumerism and sustainability. Taking place over two days, the forum featured presentations of over 20 papers proposing a range of ideas to help marketers address key issues. These ranged from improving the representation of disabled people in advertising, neutralising the role played by FOMO (fear of missing out) in risky financial behaviour and developing alternatives to the current dominant sharing economy model.

Industrial partnership to make plant-based food taste better

Sensory attributes have been a challenge in the production of plant-based foods. King's oral biologists are working with Motif FoodWorks and engineers from Imperial College London to change this while improving nutritional value. The partnership's mission is to better understand the impact of saliva on how we perceive taste and texture during chewing.

EDUCATION

Study programmes

The Multinational Corporations and Global Supply Chains module helps students become changemakers in their sector. Students explore the ever-changing role of multinational



corporations and their supply chains in the global economy, while looking at topics such as the rise of automation and big data. The Sustainability and Ethics module encourages students to think about the sustainability and role of marketers and consumers by exploring consumer behaviour and marketing communications.

I-LEAD: Centre for Innovation, Leadership, Education and Development

I-LEAD is addressing the gaps between traditional academic practices and the changing needs of students, businesses and society. The vision is to lead change through transformative business education that equips the next generation of leaders with the capabilities and mindsets to tackle global challenges.

OPERATIONS

Sustainable Food Policy and Fairtrade Action Plan

King's is addressing the impacts of the university's catering and hospitality operations while providing sustainable food for students, staff and visitors. Actions include

EDUCATION

206

teaching units related to SDG12

33 directly, 173 indirectly



14,912

student engagements with units relating to SDG12 27% of total student engagement

VENTURES

36

ventures supported by King's Entrepreneurship Institute



1,420

tonnes of waste generated 1,413 tonnes (99%) recycled (including into energy) 7 tonnes (0.5%) reused 0 tonnes sent to landfill



removing food containing palm oil and serving vegan and vegetarian options as the default at meetings and events. Co-signed with KCLSU, the Fairtrade Policy ensures the university buys and serves Fairtrade. King's was re-certified under the scheme in 2022, achieving a second star.

Ethical investment and procurement

King's has various policies in place, including King's Ethical Investment Policy and the Socially Responsible Procurement Policy, to promote responsible consumption. For example, the university does not invest in gambling, tobacco and fossil fuels. King's fully divested from fossil fuels in 2021 and the policy commits the university to investing 40% of its funds in investments with socially responsible benefits by 2025. The university has made significant progress towards achieving this target in the last four years. Not only does King's buy third-party goods and services from sustainable sources, but the university also does so in ways that have social value. Only 3% of King's supply chain is made up of large enterprises.



The vast majority of suppliers are micro-enterprises and 75% of the University's supply chain is based in the UK. King's is a member of Social Enterprise UK.

SERVICE AND ENGAGEMENT

Fairtrade Fortnight

King's has been a Fairtrade University since 2017. Choosing Fairtrade helps bring farmers together into cooperatives, paying a minimum price and paying the Fairtrade Premium on top of this. This means

farmers can prepare for disasters, invest in diversifying their crops for climate adaptation and invest in sustainable farming practices. Once a year, King's takes part in Fairtrade Fortnight. This two-week event allows campaigners, businesses, schools and organisations to show their support for the farmers and workers who grow food in developing countries and raise awareness of the plight of farmers outside of the system.

Warp It: internal reuse platform

Warp It is an online platform that saves money and reduces waste by encouraging university staff to reuse materials such as electrical equipment, furniture and lab materials. All items are free to claim and a courier service was set up to make transferring items from campus to campus as easy and efficient as possible.





SDG13: CLIMATE ACTION

Take urgent action to combat climate change and its impacts

RESEARCH

201 publications

64% of the papers relating to SDG13 were internationally co-authored (128 papers)

which represents **1.69%** of the publications in the UK

2,693 citations

3,754 mentions of King's research in the media

209 policies citing King's research

6 patents citing King's research

RESEARCH

King's research centres using their expertise to fight climate change

King's is home to a range of research expertise on climate change – hosting a variety of climate-centric research centres dedicated to finding solutions for the global climate issues we face today.

King's Climate Research Hub recognises that climate change is a multifaceted problem – with the aim to join the expertise of science, policy and culture to make positive change. The hub has worked on numerous research projects that directly contribute to fighting climate change and its consequences.

The Net Zero Centre is King's newly established centre of excellence in the science and technologies that aims to find solutions to decarbonise the economy and fosters the next generation of King's changemakers.

The Centre for Climate Law & Governance fosters interdisciplinary research about legal and governance approaches to the disruptive challenges



of climate change and sustainability in the Global North and South.

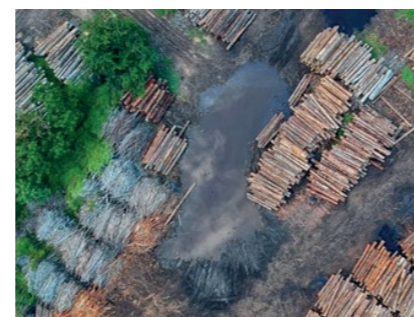
The Centre for Integrated Research in Risk & Resilience brings together researchers from across disciplines to explore responses to climate risk reduction. They've been recognised as an International Centre of Excellence by the United Nations Office for Disaster Risk Reduction.

The Leverhulme Centre for Wildfires, Environment and Society is another of King's research groups, seeking to understand the factors that govern wildfire regimes and develop ways of predicting and managing fire risks more effectively. King's has joined a new partnership with FirEURisk to address scorching wildfires in Europe, using raw satellite data to support early detection and ongoing monitoring of fires.

EDUCATION

Study programmes

Several departments at King's have addressed the pressing issue of climate change in their programmes. New courses include the Department of Geography's MSc Environmental



EDUCATION

118 teaching units related to SDG13
31 directly, 87 indirectly

7,993 student engagements with units relating to SDG13 14% of total student engagement

VENTURES

19 ventures supported by King's Entrepreneurship Institute

600+ hours of student and staff engagement around sustainability

Science for Sustainability and MSc Climate Change: Environment, Science and Policy. The first course covers how to assess environmental impact and interpret data to evaluate change, while the latter examines our human influence on the Earth's climate and environment and the societal consequences.

New series of climate education conversations launched to support educators

Science education researchers from King's and the University of York partnered to launch a new series of online workshops on climate change. This initiative builds on the British Educational Research Association Manifesto for Education for Environmental Sustainability. The aim has been to link together teachers, educators, young people and researchers to discuss climate change and sustainability education, providing a space to share ideas and perspectives on key environmental topics.

OPERATIONS

King's Climate Action Network & Action Plan contributing to climate and sustainability progress

King's Climate Action Network (King's CAN) is an open forum which aims to bring together people from across the King's community who want to address sustainability. The 200-strong group has allowed a diverse range of King's students and academics to help with climate

decision-making – contributing to over 50 sustainability actions across campus ranging from travel to education. The actions have been implemented through projects including an Energy Champions scheme, organising a climate research event and the *Sustainability Careers* podcast series. King's CAN also played a key role in the development of King's Climate & Sustainability Action Plan.

Sustainability Champions recognised for making King's campuses more sustainable

Our network of Sustainability Champions work on campus and in our residences to make King's a more sustainable place. They focus on maximising the positive – while reducing the negative – social and environmental impacts of King's operations and activities. Throughout the year, all Sustainability Champion teams work towards either a Bronze, Silver or Gold Award in recognition of the work they've achieved in offices, laboratories and halls of residences. Through the work of the champions, staff have been empowered to make positive and sustainable changes to their work environments.

SERVICE AND ENGAGEMENT

Sustainability Month and the London Student Sustainability Conference

King's Sustainability Month is an annual occurrence that unites the King's community through a series of events. They are an opportunity to encourage staff and students to



learn more about sustainability topics, collaborate and connect with others from across King's. More than 20 events were organised during Sustainability Month 2022, including a panel event on climate justice, a Shots for Hope exhibition and a Visions for the Future workshop. Last year's London Student Sustainability Conference then highlighted research and projects that aim to make the world more sustainable – providing a platform for students to present their ideas.

Partnership bringing together students from India and UK to advance climate justice

King's Dickson Poon School of Law partnered with two Indian universities to launch a new module, Transnational Remedies for Environmental Harm with Clinical Legal Education. Law students who select this module are taught to identify transnational legal remedies for rising sea-levels and extreme weather events such as cyclones. The module allows students from India and the UK to study together to facilitate cross-cultural learning.



SDG14: LIFE BELOW WATER

Conserve and sustainably use the oceans, seas and marine resources for sustainable development



RESEARCH

36 publications

75% of the papers relating to SDG14 were internationally co-authored (27 papers)

which represents **0.71%** of the publications in the UK

247 citations

116 mentions of King's research in the media

20 policies citing King's research

RESEARCH

Protecting ice sheets to reduce sea level rises

The worst effects of global warming on the East Antarctic Ice Sheet (EAIS) could be avoided – and our researchers are on a mission to find out how. Research carried out at King's shows if high emissions cause an increase of more than 2°C above pre-industrial levels, we could see the EAIS melt, contributing several metres to sea-level rise in just a few centuries. But there's still hope. If targets of the Paris Agreement are met, it could reduce or even prevent this ice loss, keeping sea-level rise to under half a metre by 2500.

Saving gentle giants: humpback whales of the Pitcairn Islands

Since the early 1990s, a small number of endangered humpback whales have been observed visiting

the Pitcairn Islands, sparking scientific and conservational interest. Researchers are looking at whale distribution, identification, songs and genetics to understand the importance of very large Marine Protected Areas (MPAs) in the conservation of migratory marine megafauna. This project will collect photo-identification and genetic data to facilitate an assessment of connectivity to other sites in the Oceania region, thus improving understanding of the population's status and enhancing regional conservation efforts.

EDUCATION

Urban Ecology

King's Urban Ecology module offers essential insights into urban ecology and urban ecosystems to assist in the creation of sustainable environmental management strategies for cities. Structured in two sections, the first

EDUCATION

73 teaching units related to SDG14
12 directly, 61 indirectly

4,831 student engagements with units relating to SDG14 9% of total student engagement

VENTURE

1 ventures supported by King's Entrepreneurship Institute

looks at urbanisation, urban forms and structure, urban biodiversity and conservation. The second explores urban hydrology, urban rivers, nature and society interaction, and both terrestrial and aquatic pollution.

Biogeography & Ecology

The Biogeography & Ecology module at King's offers foundational knowledge about biodiversity, its classification and how it varies across both terrestrial and aquatic environments. Lectures focus on the natural drivers, mechanisms and processes that have led to the geographical distribution of life on earth. These include the effects of plate tectonics, evolution, and adaptation in both land- and water-based ecosystems.

OPERATIONS

Feeding faculty and students with sustainable seafood

King's Sustainable Food Policy demonstrates the university's commitment to sourcing and serving sustainably caught fish from the UK. The university is addressing catering and hospitality impact across all five campuses. King's pledges to actively participate in sustainability discussion groups, both internally and externally, in our mission to think sustainably about the seafood we serve.

Preventing pollution of marine ecosystems

King's certified Environmental Management System guarantees that the university adheres to

international standards of practice to protect aquatic ecosystems, wildlife, and human health and welfare. King's diligently follows guidelines for water discharges, a critical measure in safeguarding the aquatic ecosystems around us. The Environmental Sustainability Policy also commits the university to responsible management of water and prevents pollution of land, water and air.

SERVICE AND ENGAGEMENT

Supporting conscious decision-making with Co\$ting Nature

Co\$ting Nature is a web tool that supports decision-makers to create quick but robust conservation-focused aquatic and terrestrial initiatives. This tool, developed by King's in collaboration with AmbioTEK and UNEP-WCMC, is programmed with 80 datasets to assess ecosystem services (ES) anywhere in the world. It helps

evaluate the impact of human interventions and scenarios, and provides policy support for the sustainable management of ES. Users can also pair the model with their own datasets for a true global application. The tool doesn't focus on valuing nature, such as how much someone is willing to pay for it, but rather costing it, to understand the environmental type and the opportunity cost of nature being protected to produce crucial ES.

Saving lives through the Crisp Packet Project

King's Crisp Packet Project reduces single-use plastics ending up in landfills and local rivers. It transforms crisp packets and clear plastics into survival blankets for those experiencing homelessness or struggling to stay warm in their homes. Online and in-person workshops teach others the King's community how to create these life-saving blankets to protect both land and sea ecosystems.





SDG15: LIFE ON LAND

Protect, restore and promote sustainable use of terrestrial ecosystems, sustainably manage forests, combat desertification, and halt and reverse land degradation and halt biodiversity loss



RESEARCH

111 publications

74% of the papers relating to SDG15 were internationally co-authored (82 papers)

which represents 1.58% of the publications in the UK

1,386 citations

1,776 mentions of King's research in the media

80 policies citing King's research

RESEARCH

Research groups for biodiversity and conservation

Research at King's explores the relationship between humans and the natural world. The Marjan Centre is a hub for interdisciplinary research that evaluates the destruction of biodiversity related to conflict, insecure environments and sustainability. Political Ecology, Biodiversity & Ecosystem Services (PEBES) research looks at biodiversity approaches to conservation, such as ecosystem services and nature-based solutions. Finally, the Environmental Security research group connects the security community and scholars working on environmental security issues. In November 2021, it secured funding from the King's Climate Change Conference of the Parties (COP26), Engagement Fund to develop two online games, addressing climate change strategies. The research group supports security sector reform efforts to create sustainable security assistance for the growing environmental crises.

World first as earth's ecosystems classified in global study

Collaborating with UNSW Sydney and Arizona State University, King's researchers have developed a comprehensive classification of the earth's ecosystems spanning both land and sea. This enhances the coordination and effectiveness of the biodiversity conservation of animals, plants and microorganisms crucial for supporting all life. The new global ecosystem typology describes the diversity of tropical rainforests and microscopic ecosystems within rocks, as well as others such as big rivers and deep ocean trenches. This research enables the identification of threatened ecosystems, aids in the development of forest restoration plans and shapes the preventative measures humans can take to protect them.

EDUCATION

Global Environmental Issues: Science & Solutions

Students studying this module at King's will explore some of the key issues affecting the environmental security of the modern world. It's

EDUCATION

98 teaching units related to SDG15
15 directly, 83 indirectly



5,636

student engagements with units relating to SDG15 10% of total student engagement



VENTURES

4 ventures supported by King's Entrepreneurship Institute



designed to help students gain a broad understanding of ten important environmental issues that have emerged during the Anthropocene, the science that underlies them, the various management and mitigation of options and technologies, and how it all links to policy. Topics covered can include deforestation, desertification and agricultural intensification, biodiversity loss and urbanisation.

New modules exploring the security implications of climate change

New modules are being developed on climate change and security by members of the Environmental Security Research Group (ESRG) at King's. They will increase awareness of the complex and extensive security implications of climate change and environmental destruction. Academics will also present potential solutions and opportunities for adaptation. These modules include Nature's Evil? Natural Resources in Global Politics, Environmental Security: an interdisciplinary approach, and Global Security Challenges. Teaching will include open-source roleplaying scenarios



on climate security. King's also offers an MA Global Security which covers climate change and the reduction of biodiversity, geopolitical contests, global governance, human rights, and justice.

OPERATIONS

Growing with care at King's Community Garden

Evidence for the positive impact of gardening is always growing. The King's Community Garden is a space for students and staff, located at Guy's Campus. Sustainability Champion, Oli Austen, set up the area as gardening is a great way to connect with nature, especially for city dwellers. Since its creation, the garden has been tended by undergraduate and postgraduate students, professional services staff, academics, technicians and KCLSU staff.

King's Biodiversity Action Plan and green spaces on campus

King's Environmental Sustainability Policy has a commitment to protecting and enhancing the environments. We're focused on preventing habitat and biodiversity loss, as well as maintaining the essential green spaces at each campus. The Biodiversity Action Plan drives this, setting out how the university intends to support and deliver estate enhancements to embrace nature, provide high-quality spaces for research, cultural and recreational activities, and benefit wildlife and the wider community.

The Memorial Garden at Guy's Campus is open to the public, providing a green space to escape from the bustle of central London.

SERVICE AND ENGAGEMENT

Recommending government on land and sea protection

The British Ecological Society Protected Areas and Nature Recovery report, co-authored by a King's PhD candidate, examines the target of protecting 30% of UK land and sea set by the government and warns that the mission will fail if we don't make radical changes. Despite areas of land being protected, the report highlights that many of these are in poor ecological condition and are not delivering for the flora and fauna they are there to help thrive. The report recommends solutions for these areas and their surrounding environments, as well as what's needed for effective restoration.

Marjan Centre Researcher shortlisted for environmental prize

John Kahekwa, research partner of the Marjan Centre for the Study of Conservation and Conflict, has been shortlisted for the prestigious Earthshot Prize. The category, Protect and Restore Nature, is the environmental equivalent of a Nobel prize. King's partnership with John provided him with the foundation to establish the value and credibility of his work protecting gorillas, creating a positive cycle of success and the opportunity to share his terrestrial conservation knowledge with the world.

16 PEACE, JUSTICE AND STRONG INSTITUTIONS



SDG16: PEACE, JUSTICE AND STRONG INSTITUTIONS

Promote peaceful and inclusive societies for sustainable development, provide access to justice for all and build effective, accountable and inclusive institutions at all levels

RESEARCH

705 publications



48% of the papers relating to SDG16 were internationally co-authored (335 papers)

which represents 5.94% of the publications in the UK



4,657 citations
5,646 mentions of King's research in the media

61 policies citing King's research

RESEARCH

Research groups working towards peace worldwide
King's has research groups, institutions and courses focusing on conflict within states, genocide and mass atrocities, as well as other critical global issues. These include the Foresight Research Groups, Transnational Law Institute (TLI), Centre for International Governance and Dispute Resolution (CIGAD), the African Leadership Centre and The Centre for Military Ethics. As part of one of these research groups, students can carry out research on topics such as public law, the protection of human rights, dispute law, cultural awareness and human trafficking. These initiatives are helping nurture the next generation of academics and decision-makers dedicated to peace and societal development.

Law school's world-leading research

The Research Excellence Framework (REF) has cast a spotlight on the quality of The Dickson Poon School of Law's research. A total of 51.2% of the school's submitted research was rated 4*, or "world-leading in terms of originality, significance and rigour". This fantastic achievement brings the school to 4th among UK law schools. It also brings the Overall Power Ranking to 6th, as well as coming in at a 7th for Research Environment and 9th for Impact.

EDUCATION

Developing critical skills in policy and administration
King's offers specialised study programmes for policy professionals and law practitioners. The Executive Master of Public Administration (EMPA) is a two-year, part-time course designed for policy experts.



EDUCATION

362 teaching units related to SDG16
103 directly, 259 indirectly



24,493

student engagements with units relating to SDG16 44% of total student engagement



VENTURES

4 ventures supported by King's Entrepreneurship Institute



The online teaching is complemented by intensive teaching and residencies in London and Geneva. Participatory and Deliberative Governance is a module introducing students to recent developments in this area, focusing on democratic innovation. Conflict Resolution in Divided Societies is a master's programme run by the Centre for the Study of Divided Societies, which itself makes a significant contribution to public debate. The programme explores conflicts in deeply divided societies by comparing case studies from around the world.

What does the Future of Legal Practice have in store?

The way law is practised is changing. Business needs are evolving rapidly. And in a competitive globalised market, clients need lawyers with a deep understanding of the way they operate. The King's community are proud to be hosting a new lecture series on 'The Future of Legal Practice'. In the series we delve into what clients need now and in the next decades, how we'll navigate the law and how legal professionals can meet individual and systemic challenges in this ever-changing world.

OPERATIONS

Commitment to Academic Freedom and Freedom of Speech

The principle of Academic Freedom for all is of the utmost importance at King's. The university holds a wide range of events with internal and external speakers. The College Charter and Statutes, established by Queen Elizabeth II and the College Ordinances, has academic freedom at its core. King's and KCLSU have also published a joint statement on Freedom of Expression which guarantees ideas are freely exchanged, and debates can be open and uncensored at our university.

Transparent finances and principles on corruption and bribery

There's no place for extortion or bribery at King's. We're committed to preventing either from happening in any of our activities and collaborations. To help guarantee transparency, we've established several policies including Policy on Fraud, Theft, Bribery and Corruption, Anti-Money Laundering Policy, and Donations Policy. We also

ensure clarity on our finances and investments by publishing an annual comprehensive financial statement that's accessible to all.

SERVICE AND ENGAGEMENT

Making a difference with King's Legal Clinic

King's Legal Clinic works with leading law firms and in-house supervising solicitors to offer free legal advice on areas including housing, intellectual property, immigration and asylum, human rights and the environment. Students get the chance to work on live cases. The Clinic has also dealt with issues such as promoting the recognition of the legal right to a healthy environment in the UK and across Europe, as well as creating animations to help people with learning difficulties understand constitutional law and democracy.

Awards received for work on peace and justice

King's Legal Clinic has opened up opportunities for students to work on key legal topics such as providing support for those claiming under the Windrush Compensation Scheme. They undertook research, gathered evidence and took statements. All of this created a body of award-winning work – achieving Best New Pro Bono Activity Award at the 2022 LawWorks and Attorney General Student Pro Bono Awards. The Clinic was also highly commended at the Public Relations and Communications Association (PRCA) 2022 national awards for sharing expertise in the 'Ukraine Explained' campaign.

17 PARTNERSHIPS FOR THE GOALS



SDG17: PARTNERSHIP FOR ALL THE GOALS

Strengthen the means of implementation and revitalise the Global Partnership for Sustainable Development

RESEARCH

10,706 publications



62% of the papers relating to SDG17 were internationally co-authored (6,590 papers)

which represents 4.88% of the publications in the UK

150,910 citations

203,281 mentions of King's research in the media

3,788 policies citing King's research

RESEARCH

Bringing together the King's community

The King's Engaged Research Network (KERN) runs regular workshops and events where staff and students can share their public engagement practices. In 2022, the Engagement Through Storytelling Workshop explored how borrowing simple techniques from storytelling can bring to life even the most technical topics in academic research. A recent project also saw a partnership between King's and the Royal College of Art that started conversations around cutting-edge medical imaging research.

Among top universities for collaborations benefitting economy and society

King's has ranked among the top universities for collaborations that benefit the economy and society in the Knowledge Exchange Framework results. This means the university attracts potential partners to access its world-class knowledge while improving performance and ensuring public funding used in knowledge exchange is effective. King's has



also been ranked in the top quintiles for several perspectives including Research Partnerships, IP and Commercialisation, Working for Business and Working with the Public and Third Sector.

EDUCATION

King's Civic Challenge

King's Civic Challenge brings together teams of students, staff and community partners to collaboratively develop solutions to some of the challenges our neighbouring communities face today. Eight projects co-created with partners from our home boroughs of Lambeth, Southwark and Westminster have won £5,000 funding each to deliver positive change in King's local communities. Projects were developed with Age UK Lambeth, Carers' Hub and the Elephant Group, among others.

Promoting global mobility

King's Global Mobility programmes provide a range of joint or double degrees at all levels and opportunities to study abroad. These programmes build on a variety of partnerships with worldwide HEIs to give students a diverse and enriching educational experience. Students studying at two institutions not only receive a qualification from each, but also build on their language skills and cultural insight, and experience life in different cities. The Go Global initiative, an annual two-week celebration promotes opportunities to study abroad. Students can get information about available roles

EDUCATION

284

teaching units related to SDG17
62 directly, 222 indirectly



22,962

student engagements with units relating to SDG17 42% of total student engagement

VENTURES

7

ventures supported by King's Entrepreneurship Institute



£27.5K

economic impact through volunteering
32 countries
575 volunteers
2,903 volunteer hours with communities



and how to navigate application processes.

OPERATIONS

Enriching staff wellbeing through volunteering

Service Time is a King's scheme supporting staff wellbeing by allowing up to three days per year of voluntary work. This service is paid and part of the university's commitment to support colleagues to take part in a community activity beyond the university. With the launch of King's Volunteering Platform in 2022, which connects student and staff members directly with volunteering opportunities, King's encourages positive actions and making a difference with community partners. This could be anything from one-off events to regular volunteering roles – there's something for everyone on the platform.

Working with global and local partners

King's partners with many London-based universities, such as UCL, Queen Mary's and the London School of Hygiene & Tropical Medicine, to respond to city-wide issues that can be addressed through different points of view, learning and cocreation. Going further afield, we aim to work collaboratively with like-minded institutions in every region of the world to address global challenges and provide diverse educational experiences for students. The best minds with a clear sense of mission and world-changing ideas come to King's and are helped to develop and implement these ideas. King's also works closely with our home boroughs of Lambeth, Southwark and Westminster to identify areas where local need aligns with King's expertise

SERVICE AND ENGAGEMENT

King's Global Day of Service

Each year in the week of 25 March, the day the university was founded, King's community comes together as part of King's Global Days of Service to take part in volunteering activities across the world. King's is the first university in the UK to run volunteering events at this scale. During the Global Day of Service in 2022, 575 students, staff and alumni from across 32 different countries spent over 2,900 hours volunteering.

Creating inspiring partnerships across Europe

King's is dedicated to using European contacts to drive change and build knowledge. The Guild of European-Research Intensive Universities brings together 19 of the most distinguished universities in 14 countries, building trust and seeking truth for the benefit of society, culture and economic growth. UNICA is a network of 46 universities in 35 European capital cities that offers King's a forum to influence and understand policy and best practice in higher education in Europe. Finally, King's is part of the Circle of European University Alliance – a network of nine universities driven to develop knowledge in service to society and address global challenges.

SDGs Complete Dataset

	RESEARCH																	EDUCATION									
	THE Impact Ranking 2021 (score)	THE Impact Ranking 2021 (rank)	Number of publications in the UK	Number of publications at King's	Proportion of publications in Open Access	Proportion of publications in the UK	Number of citations	Field Weighted Citation Impact	Number of internationally co-authored papers	Proportion of internationally co-authored papers	Number of papers co-authored with low and lower income countries	Proportion of publications co-authored with low and lower income countries	Number of publications with academic-corporate collaboration	Proportion of publications with academic-corporate collaboration	Number of policies citing King's research	Number of patents citing King's research	Number mentions of research outputs in the media (news, social media, etc.)	Number of units relating to the SDGs included in the Audit	Proportion of all units included in the audit	Proportion of all units at King's	Directly relating to the SDG	Proportion of all units included in the audit	Indirectly relating to the SDG	Proportion of all units included in the audit	Student engagements with units on SDGs included in the Audit	Proportion of the students included in the audit	Proportion of all the student body
Source	THE Impact Ranking	THE Impact Ranking	Scival	Scival	Scival	Scival	Scival	Scival	Scival	Scival	Scival	Scival	Scival	Scival	Overton	Scival	Altmetrics	ESD Audit	ESD Audit	Programme Records	ESD Audit	ESD Audit	ESD Audit	ESD Audit	ESD Audit	ESD Audit	Student records
Time-frame	2022	2022	2021-22	2021-22	2021-22	2021-22	2021-22	2021-22	2021-22	2021-22	2021-22	2021-22	2021-22	2021-22	2021-22	2021-22	2021-22	2021-22	2021-22	2021-22	2021-22	2021-22	2021-22	2021-22	2021-22	2021-22	2021-22
Overall outputs	94.4	24	26,029	493,461	74.30%	5.27%	280,565	2.12	15,670	60%	1,563	6.00%	1,592	6%	7,034	2,392	673,450	910	N/A	N/A	N/A	N/A	N/A	N/A	63,558	N/A	N/A
SDG1	80.4	29	4,124	205	75.10%	4.97%	1,686	1.66	115	56%	34	16.60%	4	2%	50	7	497	170	19%	2%	42	5%	128	14%	13,972	14%	0%
SDG2	65.6	101-200	6,319	157	80.90%	2.48%	1,588	1.88	116	74%	120	76.40%	5	3%	98	6	1,705	118	13%	2%	27	3%	91	10%	6,520	12%	0%
SDG3	80.3	37	83,975	6,945	83.10%	8.27%	119,348	3.13	4,469	64%	740	10.70%	541	8%	2,452	1,181	169,148	353	39%	5%	119	13%	234	26%	23,431	42%	0%
SDG4	65.6	301-400	8,025	330	75.20%	4.11%	1,955	1.55	167	51%	34	10.30%	8	2%	286	0	3,901	238	26%	3%	33	4%	205	23%	17,055	31%	0%
SDG5	71.1	38	7,135	342	75.70%	4.79%	2,063	1.56	173	51%	42	12.30%	8	2%	147	15	294	240	26%	3%	59	6%	181	20%	18,090	33%	0%
SDG6	79.6	37	5,338	101	73.30%	1.89%	1,171	2.07	72	71%	16	15.80%	3	3%	67	1	64	123	14%	2%	25	3%	98	11%	6,514	12%	0%
SDG7	72.6	44	16,039	191	77.50%	1.19%	2,308	1.86	135	71%	15	7.90%	13	7%	62	28	600	94	10%	1%	14	2%	80	9%	5,649	10%	0%
SDG8	74.5	29	9,378	236	68.20%	2.52%	2,220	2.08	138	58%	29	12.30%	10	4%	194	0	1,139	314	35%	5%	63	7%	251	28%	22,858	41%	0%
SDG9	90.5	71	14,122	235	67.20%	1.66%	1,492	1.37	134	57%	25	10.60%	18	8%	N/A	6	78	401	44%	6%	76	8%	325	36%	27,390	50%	0%
SDG10	84.0	18	11,400	550	75.80%	4.82%	4,197	1.87	271	49%	68	12.40%	18	3%	17	3	13,709	334	37%	5%	105	12%	229	25%	23,785	43%	0%
SDG11	87.1	30	10,503	263	76.00%	2.50%	2,757	1.84	168	64%	33	12.50%	13	5%	45	1	804	223	25%	3%	40	4%	183	20%	14,352	26%	0%
SDG12	88.6	16	7,341	98	72.40%	1.33%	1,142	2.33	60	61%	16	16.30%	4	4%	N/A	1	50	206	23%	3%	33	4%	173	19%	14,912	27%	0%
SDG13	74.3	42	11,890	201	73.60%	1.69%	2,693	2.35	128	64%	31	15.40%	9	4%	209	6	3,754	118	13%	2%	31	3%	87	10%	7,993	14%	0%
SDG14	73.4	26	5,081	36	75.00%	0.71%	247	1.23	27	75%	3	8.30%	4	11%	20	0	116	73	8%	1%	12	1%	61	7%	4,831	9%	0%
SDG15	94.8	8	7,047	111	78.40%	1.58%	1,386	2.49	82	74%	15	13.50%	1	1%	80	0	1,776	98	11%	1%	15	2%	83	9%	5,636	10%	0%
SDG16	88.5	12	11,868	705	73.60%	5.94%	4,657	1.61	335	48%	72	10.20%	15	N/A	61	0	5,646	362	40%	5%	103	11%	259	28%	24,493	44%	0%
SDG17	94.8	41	N/A	N/A	N/A	N/A	N/A	N/A	N/A	N/A	N/A	N/A	N/A	N/A	N/A	N/A	N/A	284	31%	4%	62	7%	222	24%	22,962	42%	N/A
Total SDGs	N/A	N/A	219,585	10,706	N/A	4.88%	150,910	N/A	6,590	62%	1,293	12.10%	674	N/A	3,788	1,255	203,281	3,749	N/A	N/A	859	N/A	2,890	N/A	260,44	N/A	N/A

King's College London
Strand, London WC2R 2LS
United Kingdom
+44 (0)20 7836 5454
kcl.ac.uk

