

Sustainability Projects Fund – Guide 2024-25



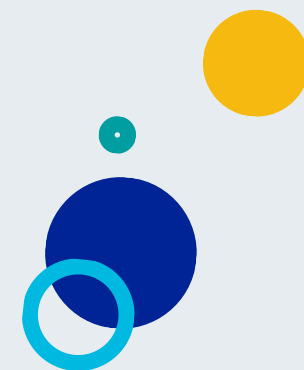
Background

- Sustainability Projects Fund (SPF) is a prize fund to support staff or student-led projects to enhance sustainability on campus
- Funded by a 20p 'levy' placed on single-use disposable coffee cups sold at King's College London catering outlets.
- Run jointly by King's Food and King's Climate & Sustainability teams.



Aims

- Contribute to the holistic advancement of environmental, social and economic sustainability at King's.
- Open to all students and staff to improve engagement of the King's community with sustainability issues.
- Students and staff are invited to submit an application for one or more of the categories in the next slides but are not restricted to these categories.



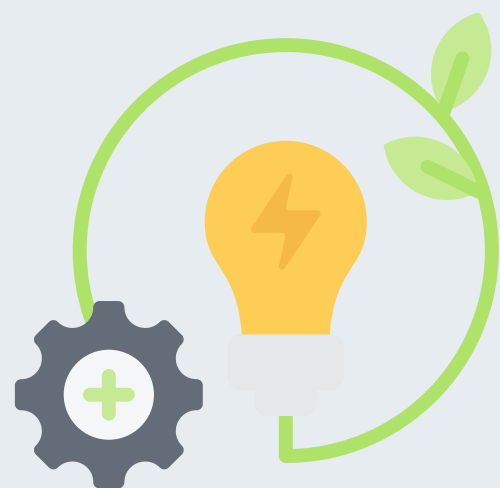
Categories



**Sustainable food
and travel**



**Waste reduction &
promotion of
circular economy**



**Carbon & energy
management**



Biodiversity

Categories



**Water use
reduction**



**Sustainability
education and
awareness**



**Sustainable and
ethical procurement**



**Community
engagement**

Timeline and eligibility

Access up to £5,000 in funding for your sustainability project!

- Small projects (under £500) - reviewed on a rolling basis. Applications can be submitted throughout the year and will be reviewed within 4 weeks.
- Large projects (up to £5,000) - submit by 19 January 2025. You will be invited to pitch to a panel.
- King's students, professional services staff, academics, and KCLSU staff can apply. Alumni can apply if their projects target King's campus.
- [Click here to find out more!](#)

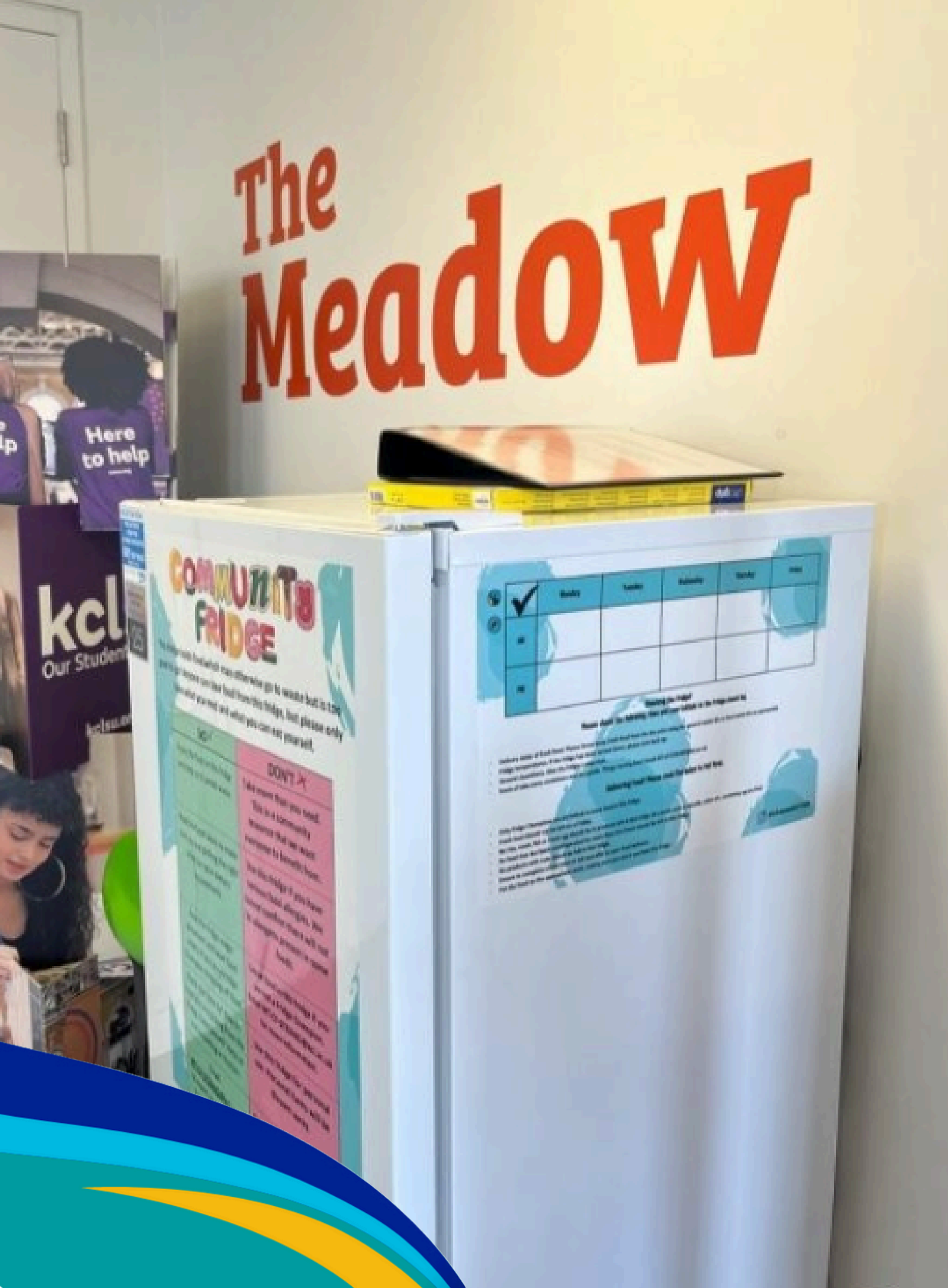
Timeline and eligibility (projects with >£500)

**Applications open
(>£500): 4 November**

**Review panels:
Early February**

**Application deadline:
24 January**

**Deadline to use funds:
31 July 2026**



Case study - Community Fridge

- A community fridge in Bush House South East Wing for students.
- Food is sourced from Student Experience events where wastage would otherwise occur.
- Acts as a community resource, responding to the cost-of-living crisis and huge amount of food wastage on campus.

Examples & past applications

[Find out more information on past successful applications](#)

King's Climate & Sustainability
King's Food



Sustainability Projects Fund

Past successful applications



Case study - Slow travel

- Addresses the current financial barriers associated with train travel from London to various destinations across Europe for conference attendance.
- This initiative aims to support individuals by providing funding to make train travel more feasible and sustainable





Case study – Increasing biodiversity

- Using tea, coffee and food waste to compost, established a small communal garden that grows food and flowers suitable for pollinators such as bees.
- Transformed the Department's bare balcony into a small garden accessible to all staff and visitors.

Example project ideas – Behaviour change campaign (e.g. on energy, food, waste, travel)

This could consist of:

1. Communications;
2. Distribution of educational material; and
3. Monitoring

Please note - KCS will be running a waste & circular economy campaign and travel campaign in 2024-25 that you could consider tying into.

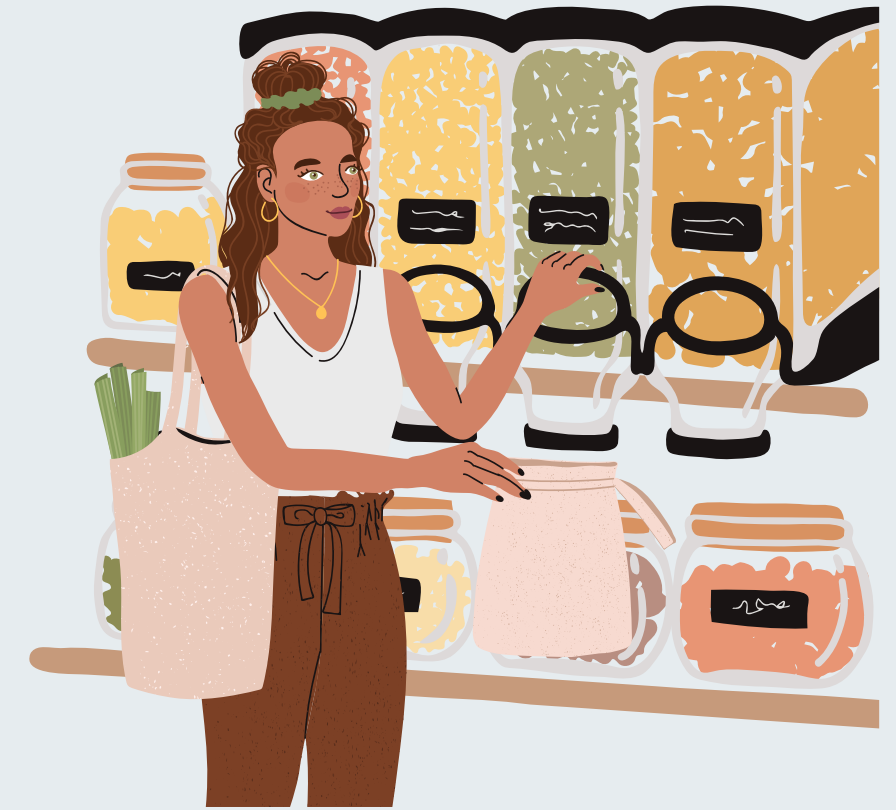
Funding needs - Communication and educational materials, workshops, events



Zero waste shop / pop-up on campus

Encourage the use of packaging-free shopping

Funding needs - Venue, materials, purchases, stock



Interactive travel map

Develop an interactive travel map that shows low-carbon routes to frequent destinations from King's

Funding needs - Research assistant, tool, IT support

Slow travel fund

Set up a slow travel fund in your department / group to support low-carbon travel

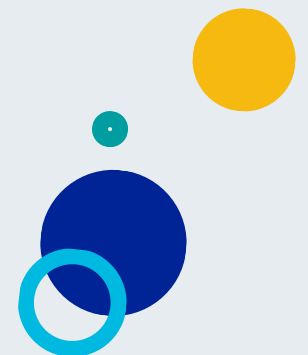
This could function as a pilot for wider roll-out across the university.

Funding needs - Communication and educational materials, workshops, events



Other logistics

- Review ‘funding exclusions’ and ‘evaluation criteria and tips’ to ensure you can justify your project in all areas. This guidance document will be published by the end of October 2024.
- Carefully review the examples of successful past submissions (can be found on the website).
- Send the completed application form to SPF@kcl.ac.uk (or reach out in case of any queries!)



Relevant links

Past successful applications:

<https://www.kcl.ac.uk/assets/sustainability/pdf/spf-previous-applications.pdf>

Guidance for 2024-25

Webpage with more information:

<https://www.kcl.ac.uk/climate-sustainability/get-involved/sustainability-projects-fund>

