

**ENVIRONMENTAL
SUSTAINABILITY**
Report

2016–17

Contents

Introduction	3	Biodiversity	16
Target overview 2016-17	4	Leadership and governance	17
2016-17 highlights	5	Spotlight on the Sustainable Development Goals	18
Carbon	6	Engagement	20
Spotlight on ethical investment	9	Spotlight on sustainable laboratories	22
Spotlight on sustainable transport	10	Spotlight on Residences	24
Water	11	Education and public engagement	26
Waste and recycling	12	KPI table	28
Supply chain	14	Targets for 2017-18	30
Sustainable food	15	Feedback and get involved	31

COVER PHOTO: AN INVERTEBRATE HABITAT AT GUY'S CAMPUS TAKEN BY BRIONY LATTER

Sustainable Development Goals

King's College London recognises that as an educator, we have a responsibility to play a central and transformational role in advancing the Sustainable Development Goals (SDGs) by 2030. The SDGs are a set of 17 goals aimed at transforming the world by 2030, and were approved by the 193 members of the United Nations (UN) in 2015. You will see SDG symbols used throughout the report that highlight how that area relates to the Global Goals. On page 18 you can find more information on a baseline study carried out on the contribution of King's to the SDGs.



Introduction

King's Strategic Vision 2029 states that 'Our vision is to make the world a better place'. Sustainability is one of the enabling foundations of this vision, recognizing the important role sustainability plays in serving a global society. Delivering against the UN Sustainable Development Goals means embedding sustainability into our research, our education and into how the university operates.

This report outlines how King's has embedded sustainability into its operations in 2016-17. The sections within the report relate to the environmental sustainability targets set out against our key impact areas. Work to achieve the targets is driven by the Sustainability Team within Estates & Facilities, but collaboration with staff and students from across King's is vital to achieving our aims.

- Our Sustainability Champions staff engagement scheme is growing every year, with 46 teams winning awards in 2016-17. Collaborating with teams across King's, we are working to embed sustainability into areas such as catering, student services, research laboratories, procurement and student residences.
- Our students and recent graduates help to drive and co-create the sustainability agenda. In 2016/17 there were three recent King's graduates who were paid members of the sustainability team, and 195 hours volunteered by King's students on sustainability projects. There were also many active student societies such as EcoSoc, a group for students interested in environmental issues, and Enactus, a student group using enterprise to solve social and environmental issues.

In our engagement with staff and students they highlight carbon, waste, and food as the areas being of importance to them that King's addresses within the environmental

sustainability agenda. Key highlights of progress in these areas include:

30% carbon reduction achieved and target to be net zero carbon by 2025

As a signatory to the Paris Pledge for Action King's has committed to keeping global temperature rise below 2 degrees and has successfully decoupled growth from growing carbon emissions. We have reduced our carbon emissions by 30% compared to our 2005-6 baseline, moving towards our target of a 43% reduction by 2020 and as of March 2017 now have an ambitious target to be net zero carbon by 2025.

Zero waste to landfill and 45% recycling rate

King's continues to work using the principles of the waste hierarchy trying to avoid unnecessary waste and waste that is disposed of is either recycled or used to generate energy. The recycling infrastructure is being improved with investment in new recycling bins and a new waste contractor will see all campuses brought under one waste contract, which will improve the service and our waste data. Awareness and engagement with our staff and students is then key to reducing the amount of waste produced and recycling more.

Working with staff and students to progress the sustainable food agenda

Food has a large global environmental

footprint and it also has the potential to impact the wellbeing of staff and students. A Sustainable Food Policy has been put in place and King's Food are now members of the Sustainable Restaurant Association (SRA), with the aim to help King's Food become more sustainable in all areas of their catering operations. The Fairtrade and Sustainable Food Working Group is open to all interested staff and students and will continue to progress against commitments to sourcing local, seasonal and sustainably produced food, offering balanced menu options and reducing negative environmental impacts such as reducing meat consumed, food waste and energy use.

Partnership and collaboration both with internal and external individuals, teams and organisations will continue to be fundamental to improving the sustainability performance of King's.

We welcome your thoughts on our first King's environmental sustainability report so please do get in touch with us with comments, or if you would like to get involved with the sustainability agenda at King's contact us via email sustainability@kcl.ac.uk









Target overview 2016–17

Target

- TARGET ACHIEVED/
ON TRACK
- PROGRESS
TOWARDS
TARGET
- TARGET NOT
ACHIEVED

- Develop the Environmental Management System to the standard of **ISO14001:2015**, to be achieved across all Estates & Facilities directly managed sites
- Achieve environmental pollution incident rate of **zero**
- Reduce absolute carbon emissions to achieve a **43%** reduction in Scope 1 and 2 carbon footprint from a baseline year of 2005–6
- Update **Sustainable Transport Plan** for the university
- Achieve **50%** recycling by weight of office and residential waste
- Maintain **zero** non-hazardous operational waste to landfill
- Reduce consumption of water by **2%** annually by 2020 (cubic meters per staff/student FTE) from 2013–14
- Develop **Biodiversity Action Plan** across all campus sites
- Regain **Fairtrade University** accreditation
- Develop **Sustainable Food policy** and targets
- Develop a university wide sustainable procurement strategy and achieve **Level 4 of Flexible Framework**
- Engage with at least one **local community project** which promotes and improves the environment
- Continue to work closely with the King's College London Students' Union (KGLSU) on **sustainability issues**
- **BREEAM** assessments to be carried out on all new buildings and major refurbishments: new buildings to achieve minimum rating of 'Excellent'; major refurbishments to achieve minimum rating of 'Very Good'

2016–17 highlights

 <p>30% Amount we have reduced our carbon emissions by since 2005–6</p>	 <p>195 Number of hours volunteered by students on sustainability projects</p>
 <p>140,000 kWh Renewable electricity generated onsite</p>	 <p>ISO14001:2015 certification was achieved for all our directly managed estate</p>
 <p>45% Our 2016-17 recycling rate</p>	 <p>69m kWh of electricity and over 56 million kWh of gas consumed</p>
 <p>1,500 1,500 actions completed by 46 Sustainability Champion teams</p>	 <p>74 kg of waste per student and staff member</p>

Carbon



43%

Target
Reduce absolute CO₂e emissions to achieve a 43% reduction in Scope 1 and 2 emissions from a 2005-6 baseline by 2020

● TARGET ACHIEVED/ON TRACK

Policy

The Environment and Sustainability Policy commits King's to implement policies and procedures to reduce the university's carbon emissions. This is embedded in Vision 2029, which states that King's will continue to decrease the carbon intensity of the university. To achieve this, King's has published an Energy and Carbon Policy, as well as a 2010-2020 Carbon Management Plan. Progress towards our target is reported publicly in our annual Carbon Management Plan updates.

In March 2017, King's also committed to becoming carbon free by 2025.

Progress

Decoupled carbon emissions and growth
King's has reduced its absolute carbon emissions by 30% since 2005-6. This reduction was made despite the university's growth in recent years, including a 100% increase in income between 2005-6 and 2016-17, as well as a 50% increase in full-time equivalent (FTE) students and staff over the same period. This has been achieved through investment in low-carbon and energy efficiency measures, utilising space more efficiently, as well as the reduction in carbon intensity of electricity from the national grid.

Low carbon and energy efficiency projects

The carbon savings are the result of a range of measures. Over the last few years, we have invested in low carbon and energy efficient projects.

- The Maurice Wohl Clinical Neuroscience Institute at Denmark Hill Campus and the Champion Hill student residence feature Combined Heat and Power (CHP) plants.

These plants supply surrounding buildings with heat and electricity, increasing efficiency and reducing losses during transmission.

- Photovoltaic (PV) solar panels were installed at Great Dover Street Apartments, Champion Hill and the King's Service Centre in Cornwall, producing over 140,000 kWh of renewable electricity in 2016-17.
- In addition, solar thermal water panels were installed at the Cicely Saunders Institute at Denmark Hill and Honor Oak Park sports ground.
- King's works with Salix to fund energy-saving projects. Salix is a not-for-profit organisation enabling public sector institutions to increase their energy efficiency by giving them access to interest-free funding. King's currently has two funds with Salix, with a combined fund size of £870,000 for energy efficiency improvements. Energy projects funded by Salix include installing lighting controls to avoid lights being left on when rooms are unoccupied, pipework insulation to conserve heat, and upgrading lights to LED in large parts of the university. Savings made from these projects are 'recycled' back into the fund to finance future projects.
- Behaviour change in labs. As a large research university, a significant part of King's energy use comes from laboratories. Therefore, we are continuously investing in more energy efficient equipment and encouraging behavioural change through our Sustainable Labs programme.

Challenges and opportunities

The university continues to grow

both in terms of income and staff and student numbers which will further challenge the university in achieving the absolute carbon reduction target of 43% by 2020 and to be net zero carbon by 2025. The overall energy usage and associated carbon emissions will increase in line with growth unless the estate is used more efficiently and further investment is made in low carbon and energy reduction projects.

Our carbon reduction target is focused on our Scope 1 and Scope 2 carbon emissions, which are carbon emissions from our use of gas, electricity and heat and therefore mainly within our control. We currently have no data on the loss of fluorinated greenhouse gases, which are present in refrigeration and air conditioning units and have a high global warming potential if released into the atmosphere, but when these are available they will be included within our 2017/18 carbon footprint. It is estimated that these equal approximately 1% of the total Scope 1 and 2 footprint.

King's also monitors Scope 3 emissions, which are indirect carbon emissions related to, among others, business travel and commuting, procurement, waste and water. Our estimates show that these areas result in significant carbon emissions, but poor data availability makes it difficult to set targets and track progress accurately. We will continue working with teams across King's to gather data to improve reporting and monitoring of our Scope 3 emissions.

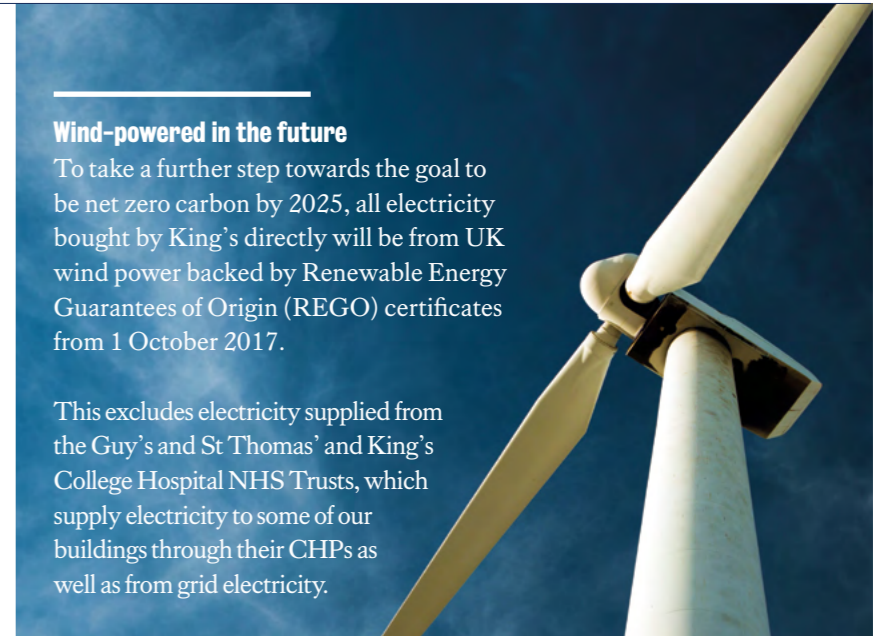
Case study Working with Bouygues to reduce our footprint

Franklin-Wilkins Building at Waterloo Campus and New Hunt's House at Guy's Campus are two large research- and teaching-intensive buildings,

Wind-powered in the future

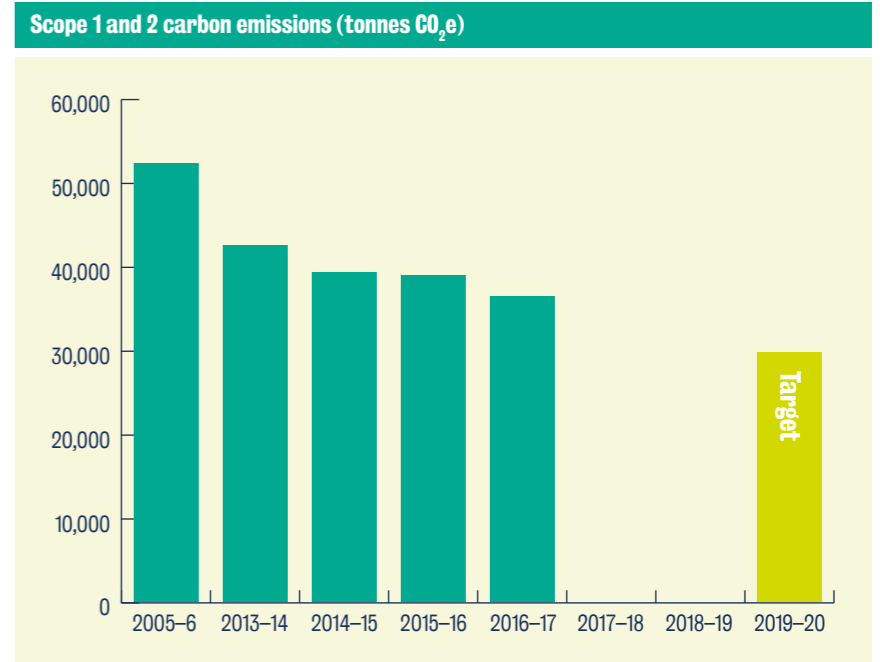
To take a further step towards the goal to be net zero carbon by 2025, all electricity bought by King's directly will be from UK wind power backed by Renewable Energy Guarantees of Origin (REGO) certificates from 1 October 2017.

This excludes electricity supplied from the Guy's and St Thomas' and King's College Hospital NHS Trusts, which supply electricity to some of our buildings through their CHPs as well as from grid electricity.



Annual Scope 1 and 2 carbon emissions						
	Unit	2005-6	2013-14	2014-15	2015-16	2016-17
Total CO ₂ e	tonnes	52,389	42,607	39,416	39,013	36,475
University income	£000	387,951	603,668	684,225	738,286	778,150
CO ₂ e per £000 of income	tonnes	0.14	0.07	0.06	0.05	0.05
Staff and student numbers	FTE	21,764	28,031	28,888	30,616	32,669
CO ₂ e per FTE	tonnes	2.41	1.52	1.36	1.27	1.12
Space NIA*	m ²	-	218,683	236,985	247,440	252,452
CO ₂ e per m ² NIA*	tonnes	-	0.19	0.17	0.16	0.14

*Net internal area



Carbon *(continued)*

Sources of King's carbon emissions in 2016–17		
Scope	Emissions Source	Tonnes CO ₂ e
Scope 1	Natural gas	10,482
Scope 1	Fuel for university-owned vehicles	20
Scope 1	Gas oil	11
Scope 2	Electricity	23,740
Scope 2	Steam and hot water	2,221
Scope 3	Supply chain	256,868
Scope 3	Business travel air	5,065
Scope 3	Water supply and treatment	357
Scope 3	Waste	67
Scope 3	Business travel other	33

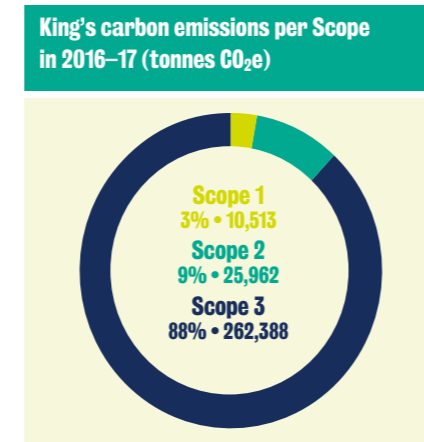
The replacement of fluorescent with LED lighting in Franklin-Wilkins Building and New Hunt's House alone is forecast to save over one Gigawatt hour of electricity a year, which is the equivalent to powering 260 average UK homes for a year.

One gigawatt

managed by Bouygues Energies and Services under a private finance initiative (PFI) contract. Both buildings contain teaching spaces, libraries, laboratories, staff offices and food outlets. Together, the buildings represent over 25% of King's carbon footprint.

To reduce their large energy consumption, Bouygues and King's delivered an Energy Performance Variation (EPV) for the PFI contract in the two buildings in 2016–17. During an EPV, energy consumption is reduced through a variety of measures ranging from behaviour change through to infrastructure changes such as installation of LED lighting or upgrading heating and cooling equipment.

The replacement of fluorescent with LED lighting in the two buildings alone is forecast to save over one gigawatt hour of electricity a year, which is the equivalent to powering 260 average UK homes for a year. An engagement campaign was launched at the same time, encouraging students and staff using the buildings to rethink their own energy use within the buildings. Students and staff were also encouraged to submit energy-saving ideas which could be introduced as part of the EPV.

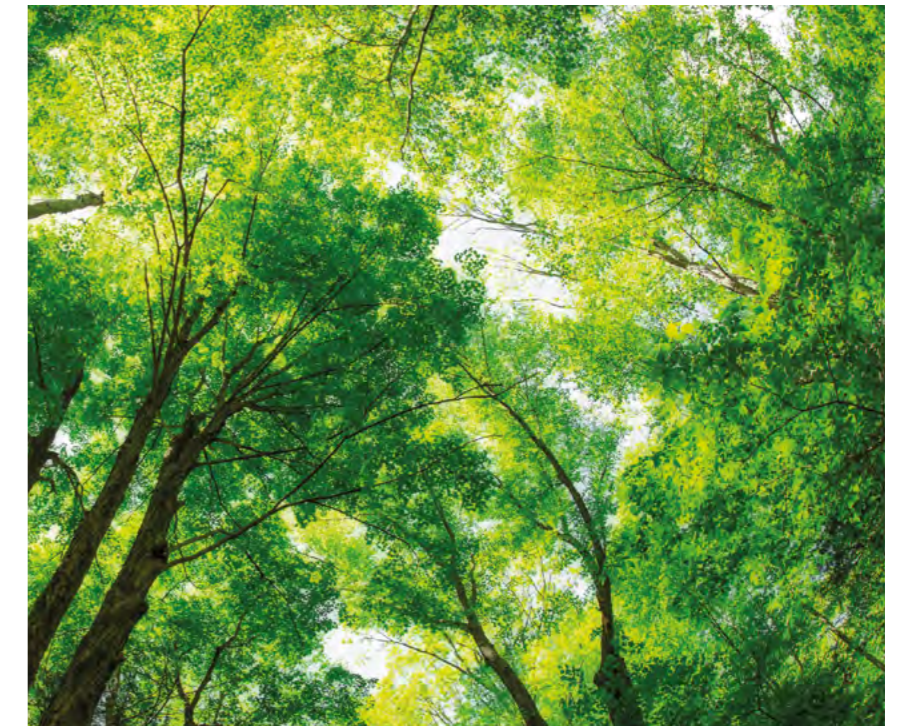


Spotlight on ethical investment



40%

Commitment to investments with socially responsible benefits from 15% to an aspiration of at least 40% by 2025



Policy

The new King's College London Ethical Investment Policy was approved in July 2017. The university will not make direct investments in tobacco and will divest from all fossil fuel investments by the end of 2022. In addition, King's will increase its commitment to investments with socially responsible benefits from the present aim of 15% to an aspiration of at least 40% by 2025 subject to there being no significant impact upon risks and returns.

Progress and challenges

In September 2016, the Chairman's Committee endorsed a set of proposals put forward by the university's Socially Responsible Investment

Review Committee (SRIRC), which included student representatives as well as staff. This started the development of plans to enable a phased divestment from the most polluting fossil fuels such as tar sands, and socially responsible reinvestment of these funds.

Following a student campaign in March 2017, King's committed to take further steps towards full divestment from all fossil fuels by 2022, approving the Ethical Investment Policy in July 2017.

In 2017/18, we will support the Finance Committee and Investment sub-committee in the implementation of the policy.

Spotlight on sustainable transport



Target
Update sustainable transport plan for the university
● TARGET NOT ACHIEVED

Policy

King's has a Green Transport Policy, which seeks to reduce carbon emissions from transport by reducing the use of individual vehicles. It promotes using sustainable modes of travel between campuses, such as public transport, cycling and walking. In addition, it encourages the use of vehicles with alternative fuels within the university fleet.

Progress

To encourage students and staff to cycle to and between campuses, secure bike storage facilities are available at main campuses, as well as some student residences. In 2016-17, bike maintenance stations were added at Strand Campus, Guy's Campus and Denmark Hill Campus to give bike users the tools to make small repairs at no cost. King's aims to make it easy for students and staff to start cycling and offers a cycle to work scheme to all staff. During Sustainability Week 2017, abandoned bicycles were given safety checks and auctioned, with proceeds going towards further cycling improvements.

To reduce carbon emissions from the university fleet, Estates & Facilities will replace its maintenance vans with electric vehicles. These have been ordered in 2016-17 and are expected to come into use in 2017-18.

Challenges and opportunities

A cycling survey undertaken in August 2016 showed that while staff and students are generally satisfied with cycling facilities, improvements are necessary. Some sites do not yet have secure bike storage available, and this was quoted as a barrier to cycling. The high demand for secure bike storage spaces has also led to facilities being at full capacity.

In 2017-18, works will be undertaken to improve bike storage facilities at the Maughan Library.

We will also carry out a university-wide travel survey to find out more about how students and staff travel to and between our campuses.

Business travel remains a significant source of carbon emissions for the university.



Water



Target
Reduce consumption of water (cubic metres per student/staff FTE) by 2% annually by 2020, against a 2013-14 baseline
● TARGET NOT ACHIEVED

Policy

King's aims to design, operate and maintain its facilities to ensure water efficiency across its estate. This is part of the King's Environment and Sustainability Policy, and forms the basis of our target to reduce our water consumption. Water efficiency forms part of the Sustainable Design Guidance for refurbishments and new builds are required to minimise water consumption, which includes the installation of rainwater harvesting where possible.

Progress

In 2016-17, we did not achieve our target to reduce water consumption by 2% compared to the previous year. Instead, water consumption increased compared to the baseline year.

Water efficiency has been a key theme in new campus buildings over the last few years. At the Maurice Wohl Clinical Neuroscience Institute, rainwater is collected and used to flush toilets in the building. Rainwater harvesting is also used at the Honor Oak Park sports ground, where it is used to irrigate pitches.

To ensure we have accurate data on the university's water consumption, we are installing Automated Meter Reading

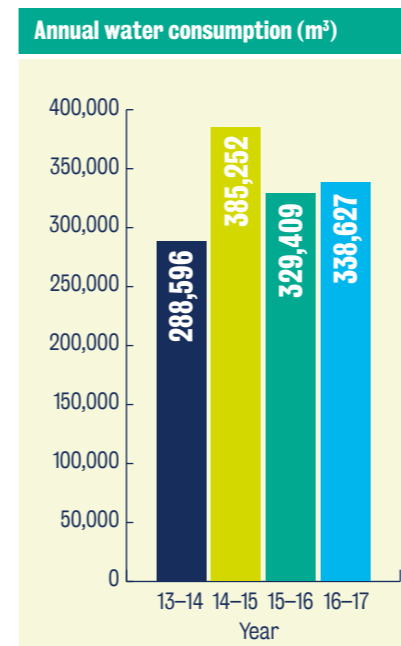
(AMR) meters across the King's estate. These meters transmit consumption data to a reporting platform every half hour, enabling us to track water consumption in real time.

Challenges and opportunities

While AMR metering has given us a better oversight of water consumption at King's, AMR meters are yet to be installed at 20% of sites. This means data on water consumption still often relies on estimates. In 2017-18, we will continue to work on the installation of AMR meters in all key buildings and using this data to improve water management by reducing leaks and identifying opportunities.

Water use in King's Residences

Sustainability was a priority when constructing Champion Hill, a student residence near our Denmark Hill Campus. The project achieved BREEAM Outstanding at the Design Stage. In addition to energy-saving measures, water efficiency was a key issue. As a result, water consumption at Champion Hill is lower than at other residences. In 2016/17, water consumption was 0.09 cubic metres per occupied night, while water consumption at Great Dover Street Apartments was 0.17 cubic metres per occupied night.



Annual water consumption					
	Unit	2013-14	2014-15	2015-16	2016-17
Water consumption	m³	288,596	385,252	329,409	338,627
Student and Staff numbers	FTE	28,031	28,888	30,616	32,669
Water consumption per FTE	m³	10.3	13.3	10.8	10.4
Target water consumption	m³	288,596	282,824	277,168	271,624
University income	£000	603,668	684,225	738,286	778,150
Water consumption per £000 income	m³	0.48	0.56	0.45	0.44
Space (Net Internal Area, NIA)	m²	218,683	236,985	247,440	252,452
Water consumption per m² NIA	m³	1.32	1.63	1.33	1.34

Waste and recycling



50%

Targets
Achieve 50% recycling by weight of office and residential waste

● TARGET NOT ACHIEVED

Maintain zero non-hazardous operational waste to landfill

● TARGET ACHIEVED/ON TRACK

Policy

King's has a target to recycle 70% of its non-hazardous operational waste by 2019-20. This includes waste from the university's office and teaching spaces, catering outlets and residences, but excludes hazardous waste and construction waste.

King's is committed to following the principle of 'Reduce, Reuse, Recycle' according to the university's waste policy, and aims to send zero waste to landfill.

Our new waste contractor Simply Waste Solutions operates a 'zero to landfill' policy. Waste that cannot be recycled is used to create energy through an Energy from Waste plant.

Food waste from King's Food restaurants and cafés is separated and disposed of via anaerobic digestion, creating biofuel and fertiliser.

Progress

In 2016-17, King's produced a total of 4,321 tonnes of waste of which 2,434 tonnes was non construction waste. The recycling rate for non-hazardous operational waste was 45%. While this falls short of our 2016-17 interim target of 50% recycling, we have taken steps to improve waste management at King's. A new waste contract was introduced this academic year, providing us with a better oversight of waste management

across our campuses, a common set of recycling guidelines for all campuses and accurate data. To make sure students and staff are aware of the new recycling guidelines, we launched a campaign to raise awareness of the changes and published a detailed 'Waste A-Z' to answer questions.

1,888 tonnes of waste, or 44% of the total produced in 2016-17, came from our construction sites. 94% of this construction waste was recycled in the last academic year.

Challenges and opportunities

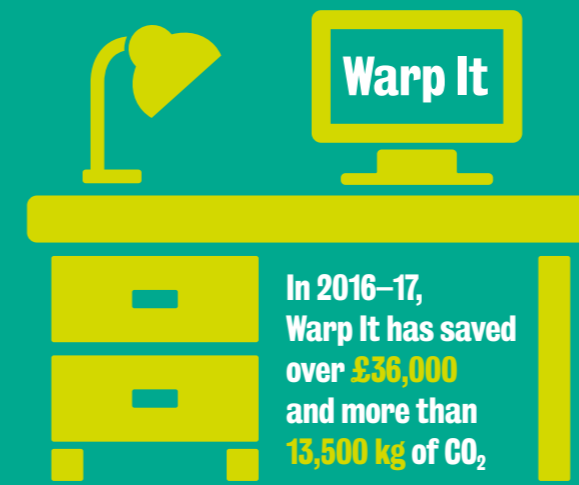
Due to the high number of waste contractors across the university, waste and recycling data is often unreliable. The introduction of our new waste contractor will provide us with more accurate data in 2017-18, and better oversight on a campus and building level. This will enable us to establish a baseline for total annual operational waste produced at King's, and to set waste reduction targets based on this. Inconsistent recycling guidelines between King's-managed buildings, Bouygues-managed buildings and embedded spaces in hospitals remain a challenge.

In July 2017, King's appointed a Waste to Resources Project Coordinator, who will be working on improvements in waste management which will lead to improved recycling rates and lower costs associated with waste across our estate in 2017-18.

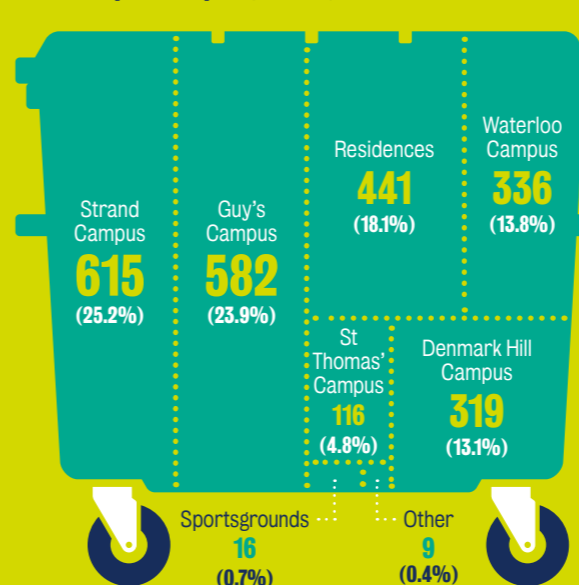
Warp It

Warp It is an online sharing platform available to King's staff. Users can add unwanted items such as furniture and research equipment to the platform. Others can then claim these items for free.

£36,000 saved
13,500kg CO₂ saved



Waste per Campus (tonnes)



2016-17 recycling rate 45%
2016-17 recycled and re-used off site 46%

2016-17 Operational waste per FTE (kg) 74



Coffee cup recycling

Square Mile Challenge

In April 2017, Hubbub and the City of London set the challenge to recycle 500,000 coffee cups in a month. Coffee cups cannot be recycled through mixed recycling bins due to the plastic lining inside the cups. The Square Mile Challenge asked everyone in the City of London to use new coffee cup bins, with cups sent for reprocessing at specialist facilities. As the only King's campus located in the City of London, the Maughan Library took part in the challenge. Five coffee cup bins and posters were installed at the Maughan, and Hubbub visited Rolls Café to speak to students about coffee cup recycling. Across the City of London, 509,000 coffee cups were collected. Due to the success of the campaign, coffee cup recycling will be rolled out to all King's campuses in 2017-18.

Supply chain



Target
 Develop a university wide sustainable procurement strategy and achieve Level 4 of the Flexible Framework
 ● PROGRESS TOWARDS TARGET



Policy
 The university's procurement statement on corporate social responsibility suggests that whilst supplier selection should be based on overall value for money in accordance with the Financial Regulations, preference should be given to suppliers who comply with a range of social and sustainability principles. This means that staff purchasing goods and services are asked to consider environmental, social and economic factors. The statement supports our target to reach Level 4 of the Flexible Framework, a self-assessment mechanism helping us to measure and monitor our progress on sustainable procurement.

Progress
 King's has reached Level 3 in the majority of areas of the Flexible Framework. The Procurement Statement on Corporate Social

Responsibility was published in September 2016, recognising that through its spending activity the university could influence the policies and strategies of its suppliers. The statement sets out a number of principles, such as minimising negative environmental impacts by reducing waste and energy consumption, and ensuring safe and healthy labour conditions. King's has also worked with NETpositive Futures, a consultancy focusing on maximising organisations' positive impacts, to engage with our suppliers and give them the opportunity to develop sustainability action plans through an online tool. So far, over 1,000 of our suppliers have signed up to the online portal and completed the questionnaire on their sustainability practices.

Through the Sustainability Champions programme, Lunch and Learns were held on Sustainable

Procurement to help engage the wider university in progressing sustainable procurement in their areas.

Challenges and opportunities
 King's will continue to work towards achieving Level 4 of the Flexible Framework in 2017/18, and arrange responsible procurement training to ensure that key staff have been equipped with the knowledge needed to assess environmental and social impacts in procurement.

Not all procurement is centralised, and with 3,500 staff members effectively able to procure at some level, training and engagement at a university level will be an important factor in making progress on sustainable procurement.

A supplier engagement strategy needs to be developed taking into consideration spend and potential social and environmental impacts.

Sustainable food



Target
 Regain Fairtrade University accreditation
 ● TARGET ACHIEVED/ON TRACK

Develop Sustainable Food policy and targets
 ● TARGET ACHIEVED/ON TRACK

Policy
 Catering services at King's are managed by King's Food, the university's internal catering team. King's Food run restaurants, cafés and food trucks, and cater for meetings, conferences and events on campus.

In 2016-17, a Fairtrade and Sustainable Food Steering Group was established to support projects on Fairtrade and sustainable food issues within King's College London.

The group developed a Sustainable Food Policy, as well as a Fairtrade Policy for King's, both coming into effect in June 2017.

Progress
 As a result of the Fairtrade and Sustainable Food Steering Group, King's re-gained Fairtrade University accreditation in August 2017.

King's has joined the Sustainable Restaurant Association (SRA), which aims to bring food businesses together around key sustainability issues. The university has also signed up to the SRA's 'Food Made Good' programme, which awards a star rating to food businesses. The star rating is based on a framework of 10 focus areas of sustainability, arranged under three overarching topics of Sourcing, Society and Environment. This includes commitments to sourcing local, seasonal and sustainably produced food, offering balanced menu options and reducing negative environmental impacts such as food waste and energy use.

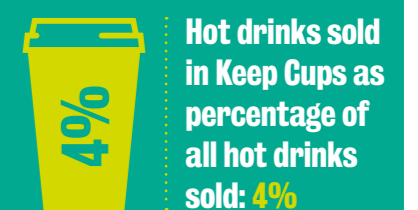
Challenges and opportunities
 King's joined the SRA in 2016-17, but has not yet completed the 'Food Made Good' questionnaire to receive a star rating and action plan. King's Food aim to complete this exercise with the help of student volunteers in 2017-18.

Reducing disposables

King's Food are taking steps towards reducing disposables at King's. Reusable coffee cups are sold at cost price at all cafés. To encourage the King's community to ditch disposable coffee cups, discounts are offered for using reusable cups. In 2016-17, King's Food sold over 2,500 Keep Cups and served over 21,000 drinks in reusable cups.

To avoid the use of plastic water bottles at meetings, King's Food have installed water purifying facilities at buildings with catering facilities. Purified still or sparkling water in reusable King's-branded glass bottles is offered as an alternative to plastic.

The university is also part of the #OneLess campaign, a ZSL campaign to reduce single-use plastic water bottles in London. From September 2017, reusable biodegradable water bottles will be sold at food and coffee outlets across the university. Staff and students can use the King's App to find water fountains on campus near them.



Biodiversity



Target
Develop biodiversity action plan across all campus sites
 ● TARGET NOT ACHIEVED

Policy

Biodiversity, or biological diversity, refers to the variety of life on earth. The benefits of conserving biodiversity go beyond environmental impacts, as green spaces and biodiversity can also have a positive impact on human health. Researchers at King's recently found links between exposure to biodiversity in cities and mental health, highlighting the importance of urban habitats.

Despite their locations in the heart of London, King's campuses can provide valuable habitats for urban wildlife. The King's Environmental and Sustainability Policy commits the university to maintaining the grounds and buildings of the estate in an environmentally sensitive way to cultivate biodiversity.

Progress and challenges

We have not achieved our target of developing a university-wide Biodiversity Action Plan in 2016-17 but will be working towards this in 2017-18. A Biodiversity Working Group consisting of campus representatives, student representatives and landscaping contractors will be established in support of the Biodiversity Action Plan. In addition to this, King's will work with the London Wildlife Trust to carry out biodiversity surveys across all campuses and sportsgrounds. Progress has been made in increasing habitats on campuses through management and in new builds as demonstrated in the case studies.

Integrating biodiversity into Champion Hill

Champion Hill is a part heritage listed residence near Denmark Hill Campus. Several biodiversity features were embedded in the design of the residence, such as green space and a pond in the central courtyard. Bee-friendly flowers have been planted around this green space, and the residence team has planted a herb garden for residents, using fertiliser produced in the residence's composting facilities.



Biodiversity at Guy's Campus

As part of their Gold Action Plan, the Guy's Estates & Facilities Sustainability Champions implemented a range of biodiversity initiatives at Guy's Campus.

An invertebrate habitat with an integrated information panel was placed in the centre of the Memorial Garden at Guy's Campus, informing students, staff and visitors of the importance of creating small habitats. In addition to this, bird boxes and bat boxes were installed on trees and buildings around the garden.

Leadership and governance



Target: Develop the Environmental Management System to the standard of ISO14001:2015, to be achieved across all Estates & Facilities directly managed sites
 ● TARGET ACHIEVED/ON TRACK



Policy

The King's Environment and Sustainability Policy commits the university to manage its activities, buildings and estates to promote environmental sustainability. To achieve this, Estates & Facilities are committed to operating an ISO14001:2015 certified Environmental Management System (EMS) across the university estate.

ISO14001:2015 is a structured management tool that enables us to systematically identify, evaluate, manage and improve environmental performance and practices. This brings many benefits across King's including improving efficiency of our operations thereby reducing costs, demonstrating legal compliance, and helping us to manage our environmental impacts.

The EMS is at the heart of embedding environmental sustainability at King's College London and takes a holistic

view of the positive and negative environmental impacts and risks arising from our activities.

Progress

King's achieved the ISO14001:2015 certification for Strand Campus in 2016. In 2016-17, we built on this by expanding the EMS to all campuses, residences and sports grounds. Following a successful external audit in June 2017, the EMS is now certified to the ISO14001:2015 standard across all sites.

Challenges and opportunities

Continuous improvement is at the centre of the ISO14001:2015 certification. In 2017-18, we will continue to internally audit sites to ensure compliance with the EMS, and to find areas for further improvement. The Sustainability Team maintain an action log to ensure recommendations and observations from these audits are followed up on and carried out.

Spotlight on the Sustainable Development Goals



King's College London recognises that as an educator we have a responsibility to play a central and transformational role in advancing the Sustainable Development Goals (SDGs) by 2030. In March 2017 we undertook a baseline study to identify areas in which King's contributes to the achievement of the United Nations' (UN) Sustainable Development Goals (SDGs) and what more could be done. The contribution was assessed in terms of projects, policies and research outputs by King's as a whole; specific staff interests; and the teaching of modules and courses.

The study identified the major areas in which King's is contributing to the achievement of the SDGs and considers options around how King's can more closely align its work with the SDG framework in future.

Areas of significant contribution to the SDGs

Perhaps unsurprisingly for a university with multiple health schools, the

major contribution that King's is making to the SDGs surrounds Goal 3 – Good Health and Well-Being. Online research surrounding this goal identified over 1,000 staff, almost 900 modules and 45 projects contributing to this goal.

As an educational institution, by its nature King's contributes to Goal 4 – Quality Education. The research for this report took King's general contribution as a given, but still found almost 100 staff, more than 50 modules and 14 projects that contributed directly to Goal 4.

The other goal where King's makes a stand-out contribution to the SDGs is Goal 16 – Peace, Justice and Strong Institutions. The research identified almost 300 hundred staff, more than 100 modules and 9 projects that contribute to this goal.

Areas of least contribution to the SDGs

While the research for this report found that King's contributed to all 17 SDGs in different ways, there were three goals where there was a notable lack of impact identified: Goal 2 –

Zero Hunger; Goal 6 – Clean Water and Sanitation; and Goal 12 – Responsible Consumption and Production. King's may make more contributions to these goals than identified through this report, and if the university decides to more closely align its work and reporting with the SDGs, more impact in these areas is likely to emerge.

The report also collated feedback from staff about their perceptions of the SDGs, and the utility and importance of raising awareness about the goals and assessing and publicising

our contribution to achieving them. Potential paths forward were suggested by members of staff, alongside any reservations, which will help to guide future approaches to aligning King's work with the SDGs.

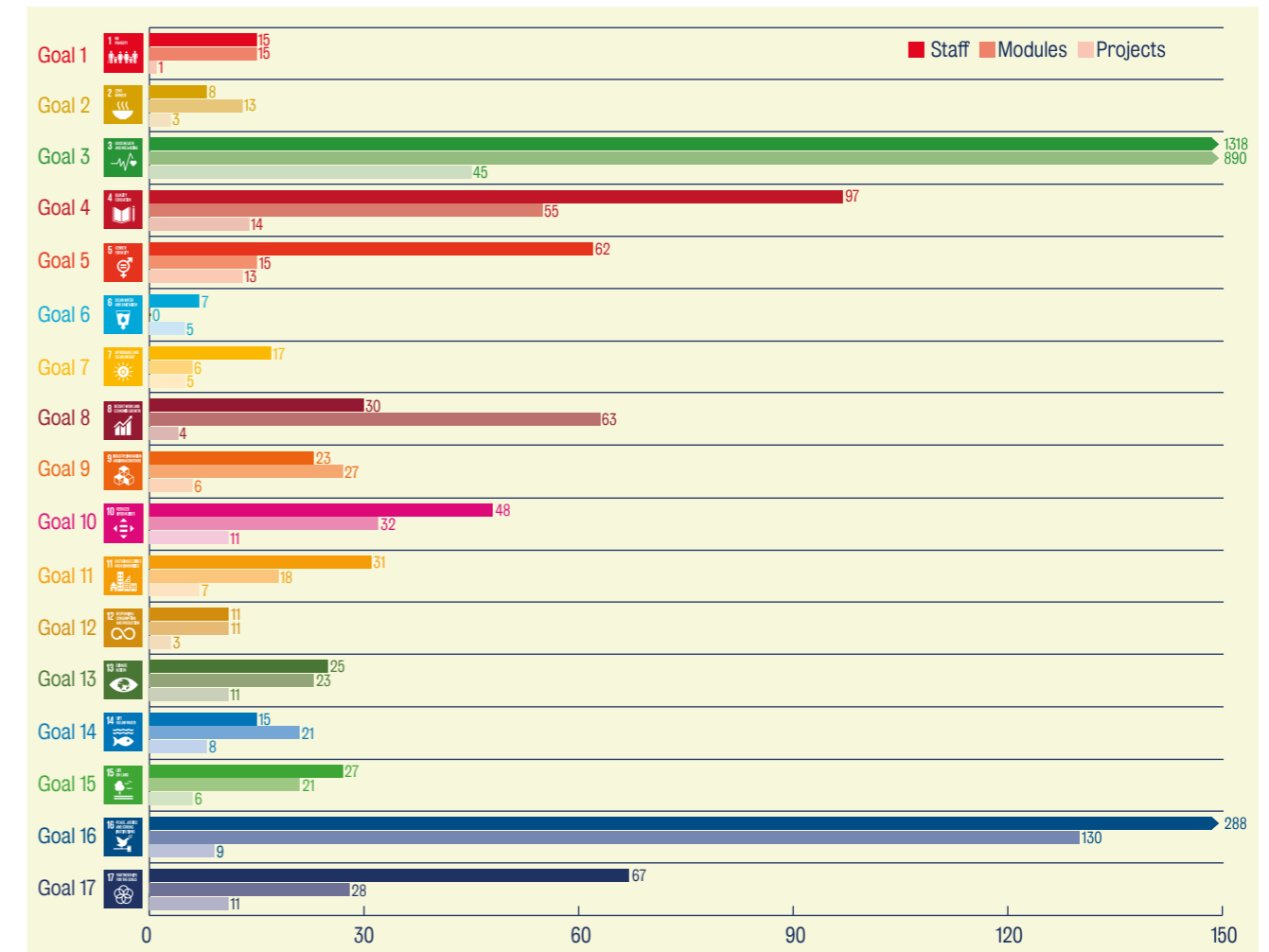
Challenges and opportunities

There was no established methodology to use at the time that the baseline SDG study was carried out, so it was developed for the project. A two-year review cycle of King's contribution to the SDGs was considered to be the right frequency. There is an opportunity

to learn from and work with others to improve the methodology as more organisations carry out similar exercises and methodologies are refined.

The SDGs align with Vision 2029 to make the world a better place through serving society and finding solutions to the global societal challenges. There is an opportunity to further embed the SDGs and align with the wider 2029 strategy – reporting against the Service Strategy for instance when considering the impact on society the SDGs provide a framework that will become globally recognised.

SDGs at King's: Number of King's staff, modules and projects contributing to each of the UN Sustainable Development Goals



The UN Sustainable Development Goals (SDGs)
 The UN Sustainable Development Goals are a set of 17 goals, aimed at transforming the world by 2030. Also known as the Global Goals, they cover a broad range of topic areas, including eliminating poverty and hunger, achieving gender equality and taking action on climate change. They were agreed by the leaders of the 193 United Nations member states in 2015 as part of the 2030 Agenda for Sustainable Development. The 17 SDGs, and 169 targets and 230 indicators they hold, provide a powerful framework to drive change in both developing and developed nations around the world.

Engagement



Target
Increase sustainability awareness of staff and students:

Engage with at least one local community project which promotes and improves the environment

● TARGET ACHIEVED/ON TRACK

Continue to work closely with KCLSU on sustainability issues

● TARGET ACHIEVED/ON TRACK

Key figures

- 46 Teams
- 21 Office teams
- 25 Lab teams
- 220 Sustainability Champions
- 1,521 Actions
- 1,783 Staff engaged
- 8 Gold
- 18 Silver
- 18 Bronze
- 2 Working Towards Gold

Policy

The Environment and Sustainability Policy commits King's to promote environmental management by increasing the awareness of environmental responsibilities amongst staff and students. As a result of this, King's has set a target to increase sustainability awareness, both within Estates & Facilities and throughout the university.

Progress

There are a number of initiatives to involve students and staff in sustainability at King's.

The Sustainability Champions programme for offices and laboratories follows the national NUS Green Impact scheme. It empowers staff to embed sustainability into their work environment through an online workbook. To help staff achieve this, we ran 20 Lunch & Learn sessions across our campuses, covering topics such as energy, waste and sustainable procurement. This year, we also piloted a new Gold Award for offices. While teams previously completed a list of actions to achieve Gold, they now develop a Gold Action Plan with the support of the Sustainability Team. The Action Plan focuses on topics the Sustainability Champions see as their key influence areas and enables them to create unique and tailored projects.

46 teams were presented with Bronze, Silver or Gold Awards by the President & Principal Professor Edward Byrne during an award ceremony.

Staff Inductions and training:

As part of the Fit for King's training programme, all Estates & Facilities staff now receive training on sustainability at King's. So far, 633 members of staff have completed the sustainability training session and all staff received an introduction to sustainability as part of their induction.

Sustainability Weeks: In October 2016 the Sustainability Team worked with the Residences team to offer a fun week of events for student residents. In February 2017 the annual university Sustainability Week took place. Over the course of the week, the Sustainability Team, Sustainability Champions and EcoSoc ran over 31 events, including a vegan lunch, careers panel and film screenings.

Student volunteering: Throughout the year, we offered volunteering opportunities to students. In total, students volunteered 195 hours on environmental projects which included:

20 students completed IEMA-certified environmental auditing training and audited the Sustainability Champions office teams. A further 20 students trained as Student Switch Off Ambassador for the NUS Student Switch Off campaign in King's Residences. We also offered one off opportunities such as with local environmental groups such as Thames 21.

Working with the local community

King's collaborates and takes part in a number of local Business Improvement Districts (BIDs) around its campuses. At Guy's Campus, King's has taken part in a biodiversity walkover with Team London Bridge, which inspired the installation of an invertebrate habitat. We have also worked with Team London Bridge on the delivery of a Low Emissions Neighbourhood, aiming to reduce air pollution around London Bridge. At Strand Campus, the Northbank BID also has a strong focus on air pollution, and we aim to work with them in the future to develop biodiversity projects that can help improve air quality in the area.

Challenges and opportunities

Despite the Sustainability Champions programme growing year-on-year, many departments are not yet covered. In 2017-18 we will focus on expanding the Sustainability Champions network to include teams from more faculties and departments.

Due to the high demand for volunteering opportunities from students in 2016-17, we will aim to offer more volunteering positions to students in 2017-18, including involvement in the Sustainability Champions programme.

Sustainability careers advice

After achieving Silver in 2015-16, the King's Careers and Employability team developed and implemented a Gold Action Plan focused on equipping students with the knowledge to embed sustainability into their career. The team developed a sector guide on sustainability, giving advice on resources, specific job boards and organisations to look out for.

Careers & Employability also arranged internship opportunities with small organisations in the sustainability sector, giving King's students the opportunity to gain valuable work experience. In addition to this, the team organised two panel events on careers in sustainability during Sustainability Week 2017.

Fetch Ur Veg

Over Summer 2017, European & International Studies students Elizaveta and Johanna set up the vegetable cooperative Fetch Ur Veg. Fetch Ur Veg run deliveries of seasonal organic vegetable bags to campus, where members of the cooperative collect them once a week. Their aim is to help students live healthy lifestyles by making buying organic, local produce affordable and easy.



Working with the Students' Union

Throughout the year, we worked closely with KCLSU to improve sustainability across King's. KCLSU participates in efforts to make food on campus more sustainable by co-signing our Fairtrade and Sustainable Food policies, and being part of our Fairtrade University application. The KCLSU Operations team took part in our Sustainability Champions programme, winning Bronze in 2016/17 and aiming to achieve Gold level in 2017/18. In addition, KCLSU were awarded 'Very Good' by NUS in the Green Impact Students' Unions accreditation scheme, which looks at sustainability in students' unions across the UK.

Spotlight on sustainable laboratories



Policy

King's is a research-intensive university with a significant number of laboratories across all campuses. Labs use between 3-10 times as much energy per square meter as an office or lecture space. This makes sustainability in labs an essential part of achieving our carbon emissions reduction target.

Progress

The Sustainable Labs programme is part of the Sustainability Champions programme with a dedicated online workbook. The actions in the workbook are tailored to lab environments and range from maintaining ultra-low temperature freezers to increase efficiency, to implementing non-hazardous plastic recycling procedures.

In 2016-17, 25 lab teams achieved Bronze, Silver or Gold Awards as part of the Sustainability Champions programme.

To support researchers looking to procure energy efficient lab equipment, the Efficient Equipment Purchasing Fund was set up. This fund can be used to pay towards higher upfront costs of energy efficient equipment.

Challenges and opportunities

As well as being energy-intensive, labs generate high levels of plastic waste. This is usually treated as clinical waste and not recycled. Several labs within King's have trialled recycling laboratory plastic by reducing the amount of plastic packaging entering labs, and by decontaminating plastics. In 2017-18, we will work on a Laboratory Recycling Policy to implement recycling schemes across the university. This will increase recycling rates, as well as decrease the amount of waste to be incinerated.

Success at Green Gown Awards 2016 and 2017

The national Green Gown Awards celebrate sustainability initiatives at universities and colleges across the UK and Ireland.

In November 2016, King's received a Highly Commended Green Gown Award in recognition of its Sustainable Labs programme.

In addition to this, Bernard Freeman, Laboratory Manager at the Social, Genetic & Developmental Psychiatry Centre (SGDP) labs at Denmark Hill Campus, was announced as a finalist for the 2017 Green Gown Awards. Bernard was nominated for his exceptional work in embedding sustainability into all aspects of research management. He pioneered a sample tracking software, which has increased energy efficiency of cold storage by maximising capacity. Bernard also developed a centralised purchasing system for 200 types of laboratory consumables, resulting in lower emissions from deliveries and a reduction in waste from over-purchasing by different departments.



Controlling fume cupboard face velocity

Fume cupboards in labs control exposure to hazardous gases through ventilation. While the equipment itself utilises notable amounts of energy, there is also a significant loss of heated or cooled air i.e. unnecessary energy loss. Inspections of fume cupboards across King's showed that many operated a 'face velocity', the speed at which air travels through the opening when the sash is at a safe working height, higher than necessary. A fume cupboard management policy now ensures fume cupboards are inspected annually, and their face velocity reduced to 0.5 m/s for existing equipment, and 0.35-0.4 m/s for new installations. Just by implementing this in one building – the Franklin-Wilkins Building it is expected to save £8,550 in electricity costs per annum.

Sustainability Lab Champions

Sustainability Champions are key to embedding a culture of sustainability into the laboratories. Champions will do things like put stickers on laboratory kit to remind researchers to switch "switch things off after use" use, encourage Christmas and holiday shut-downs, explore the possibility of consolidating purchasing of consumables, make sure autoclaves are only used when full, ensure clear signage is put on waste streams, encourage researchers to recycle in the lab and make sure that energy costs are factored into procurement decisions.

This video describes the motivations and experiences of some of the existing Laboratory Sustainability Champions at King's. Sustainability in labs video: <https://bit.ly/2LYZ3rI>



Spotlight on Residences



Policy and progress

King's directly manages four residences, and has spaces for students in eight private and eight University of London Intercollegiate Halls. As the directly managed residences form part of the King's estate, our environmental policies and targets apply to them.

A number of initiatives have been implemented in Residences to make them more sustainable in 2016-17.

The Student Switch Off campaign was run with the National Union of Students across all residences, except for Intercollegiate Halls. The annual campaign aims to save energy and increase recycling rates by offering prizes to students who get involved, as well as to the residences saving the most energy over the academic year. In 2016-17, 679 students pledged their support online or during hall visits. Champion Hill won the competition and residents were rewarded with a delivery of ice cream.

King's also removed mini fridges from student rooms in Stamford Street Apartments and Great Dover Street Apartments and replaced them with larger communal fridges in kitchens.

Challenges and opportunities

Despite high levels of student engagement in the Student Switch Off campaign, no energy savings were made in 2016/17. Overall energy consumption in residences increased by 1% compared to the previous year. Reasons for this increase are not clear – factors such as weather affect energy consumption especially in electrically heated halls. To ensure all residences can be scored consistently, a new scoring system focusing on student engagement and recycling audits will be introduced in 2017/18.

Energy and waste data was requested from the private hall providers but was not provided. This data will be reported on when it is available.

As only four residences are directly managed by King's, we have not been able to implement our waste and recycling improvements in all residences but will be working with halls providers to improve guidelines and communication.

Waste and recycling data from Residences has been very limited and based heavily on estimations as the data was not provided by the waste providers. The four directly managed residences were included in the university-wide re-tender of waste services, which will provide more accurate data from summer 2017 onwards.



Residential carbon emissions in 2016-17

Emission source	Scope	Emissions (tonnes CO ₂ e)
Gas	Scope 1	780
Electricity	Scope 2	1,790
Waste	Scope 3	10
Water supply	Scope 3	33
Wastewater treatment	Scope 3	68
Carbon emissions from Intercollegiate Halls	Scope 3	477
Carbon emissions from other third-party residences	Scope 3	Data not received
Total emissions (Scope 1 and 2) from directly-managed Residences		2,571
Total emissions (Scope 1, 2 and 3) from all Residences		3,158

Champion Hill

The Champion Hill team have worked on several initiatives to make the residence more sustainable.

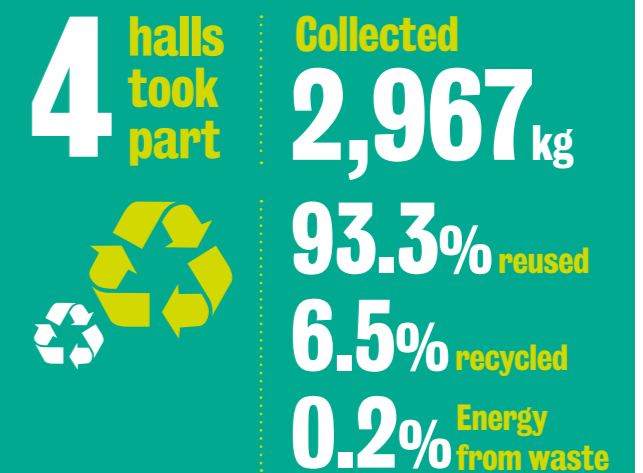
To reduce the use of paper at reception, they implemented a paperless system for signing in visitors, collecting parcels and borrowing keys and vacuum cleaners. Instead of paper forms, tablets have been installed at reception to use for services. In addition, residents are encouraged to use eco-friendly cleaning materials. When moving in, they are given a bottle of eco-friendly cleaning solution made up of vinegar and water and instructions on how to make more. Each kitchen also has posters explaining how to make eco-friendly cleaning products, avoiding harsh and potentially polluting chemicals and helping students save money. Finally, the Champion Hill residences team have created a vegetable patch at Champion Hill, which allows students to learn new skills, grow food locally and cut down on their food miles. The patch uses compost from the residence, which includes green waste and grass cuttings as well as compost from the onsite wormery.

Residential and non-residential carbon emissions in 2016-17

University Scope 1 and 2 carbon emissions	36,475
University Scope 1, 2 and 3 carbon emissions	298,860
Residential emissions % of total (Scope 1 and 2)	7%
Residential emissions % of total (Scope 1, 2 and 3)	1%

Re-use

As students prepare to leave King's Residences in the summer, many items such as clothing, non-perishable food or cutlery are thrown away. To give students who are unable to take items with them the opportunity to donate them instead, King's Residences implemented a re-use collection scheme. Throughout June, collection boxes were placed in central locations at Champion Hill, Great Dover Street Apartments, Stamford Street Apartments and Wolfson House. Students donated 3,000kg of items, of which 93% were reused. This included 388kg of kitchen equipment such as kettles and pots, 776kg of bedding such as duvets and pillows, and 1,219kg of clothing. Better Re-Use then collected the items and distributed them to charity partners across London.



Education and public engagement

This report is focused on the sustainability of our operations however we wanted to present some highlights of our research and education activities associated with sustainability here at King's.

Thames Plastic & the exploration of future dust

Thames Plastic & the exploration of future dust is an art project by Maria Arceo, supported by King's, Thames21 and a wide network of cross-disciplinary organisations, experts and volunteers. Its aim is to show Londoners the plastic waste that can be found along the Thames beaches. King's students were involved in the project throughout the year, with the Department of Geography hosting a Mapathon to identify and map accessible Thames beaches for litter collection. During Sustainability Week, King's staff and students joined Maria Arceo for a beach clean-up, collecting plastic waste that would become part of a piece of art.

As well as showing the magnitude of plastic waste found in the river, the project allowed Londoners to get up close and personal with plastic waste. During the Plastic Lab at Somerset House in June 2017, the public was able to sort plastic by colour, and pick pieces to be analysed by chemists in a pop-up lab. The final piece, a giant plastic footprint, travelled across London during the Totally Thames festival in September 2017.

PHOTO: ARTHUR OP DEN BROUW



PHOTO: ED STONE



Global partnerships

The major challenges facing the world today are global in nature and the development of potential solutions is beyond the capacity of any single institution – public or private.

King's is a member of the Global Consortium for Sustainable Outcomes (GCSO), a partnership between 11 world-leading universities to create solutions to global sustainability problems through research, development and capacity building. Universities can be places of innovation and act as 'living labs', while global partnerships can scale solutions to the global level. Projects within the GCSO are split into three broad areas: CapaCities, Sustainability Education, and On – and Off-Campus Solutions. In January 2017, King's hosted representatives from the member institutions to work on project proposals for On – and Off-Campus Solutions.

King's is also a member of the PLuS Alliance, which combines the strengths of three leading research universities on three continents – Arizona State University, King's College London and the UNSW Sydney – to solve global challenges around health, social justice, sustainability, technology and innovation. The PLuS Alliance will also work to increase access to world-class higher education in high-need areas through tailored, innovative digital technologies and will offer educational programmes focused on global issues so that individuals are better prepared to join a workforce that increasingly operates across cultures and borders.

Public events and lectures at King's

As a university, King's has the opportunity to start dialogues on sustainability issues not just within the university, but also with the public. A number of events on sustainability and climate change were hosted by departments in 2016–17, including events on climate change and health, climate governance, and climate change and the media.

The Environmental Research Group, part of the School of Population & Health Sciences, is a leading provider of air quality information and research in the UK. As well as informing the public on air pollution through the London Air Quality Network website, they supported air quality and art exhibitions such as Space to Breathe at Somerset House.

Public lectures in 2016–17 included:

- Over-consumption vs Over-population: How to address global challenges
- Why should health professionals care about climate change?
- Climate Law and Governance
- Climate Change in the Media: the greatest story never told?

Sustainability and ethics in the curriculum

King's Learning Institute (KLI) provides professional development to support teaching and learning staff at King's. The KLI ran two courses in 2016-17 on 'Embedding sustainability and ethics into the curriculum'. The course allowed participants to see what good practice in this area looks like and to work through examples in their subject areas.

NUS Employability Skills Survey

Each year, the National Union of Students (NUS) carries out a survey on students' opinions on employability skills. In 2016–17, 626 King's students took part in this survey, answering a series of questions on the skills and knowledge they would like to gain during their time at university.

When asked how important learning certain skills, attributes and knowledge was to them personally...

69%

said it was very important or fairly important to them to understand how human activity is affecting nature

89%

said it was very important or fairly important to them to consider the ethical issues linked to their subject while at university

81%

said it was extremely relevant or somewhat relevant to build the skills and knowledge needed to help other people and the environment into the existing content of their course

KPI Table

The following performance indicators are structured according to the principles of the International Sustainability Campus Network (ISCN) and Global Universities Leaders Forum (GULF) Charter. Principle one focuses on university buildings and their sustainability impacts, Principle two focuses on campus-wide planning and target settings, and Principle three focuses on the integration of research, teaching, facilities and outreach.

	Priority Topics	Target	Unit	Baseline	Baseline Year	2014-15	2015-16	2016-17	Target Progress	Key Initiatives
ISCN Principle 1										
Resource Use	Electricity from grid	Reduce CO ₂ emissions by 43% by 2020, compared to 2005/06 baseline	kWh	68,616,841	2005/06	61,021,046	65,519,884	67,528,476	Positive	Energy efficiency projects, including the installation of LED lights across campuses and engagement campaigns.
	Gas excluding CHP input		kWh	59,894,645	2005/06	53,044,335	50,806,725	50,741,375		Energy efficiency projects, including the installation of Combined Heat and Power (CHP) plants.
	Gas for CHP input		kWh	0	2005/06	1,941,016	5,034,160	6,178,156		Installation of CHP plants in several buildings, e.g. Champion Hill.
	Gas oil		kWh	5,372,558	2005/06	0	297,000	39,612		King's no longer has oil-heated buildings, but backup generators remain.
	Heat		kWh	31,418,485	2005/06	4,753,486	8,011,243	11,253,079		Heat supplied from hospitals and our CHPs provides us with low-carbon heating.
	Energy (heat and electricity) generated/consumed from onsite CHP		kWh	0	2005/06	1,343,110	3,241,868	3,233,724		CHPs have been installed in several buildings, e.g. Champion Hill, providing us with low-carbon energy.
	Energy generated/consumed from onsite photovoltaic		kWh	0	2005/06	6,000	95,753	143,142		Installation of PV at several buildings, including Great Dover Street Apartments and Champion Hill.
	Vehicle fuel		Litres	Not recorded	2005/06	3,095	8,492	8,043		Electric vehicles have been ordered to replace Estates & Facilities vans.
	Water use	Reduce water use by 2% year on year per FTE (total staff and student)	m3	288,596	2013/14	385,252	329,409	338,627	Negative	Installation of Automated Meter Reading (AMR) meters to monitor consumption.
Water use per FTE	m3		10.3	2013/14	13.3	10.8	10.4	Installation of Automated Meter Reading (AMR) meters to monitor consumption.		
Waste	Total waste (incl construction)		Tonnes	3,559	2013/14	1,206	2,864	4,322		Improved data accuracy due to reduced number of waste contractors.
	Operational waste		Tonnes	3,559	2013/14	1,174	2,641	2,434		Improved data accuracy due to reduced number of waste contractors.
	Operational recycling rate	Recycling rate of 50% for 2016/17, 70% by 2018/19		46%	2015/16	50%, poor data quality	46%	45%	Negative	Improved data accuracy due to reduced number of waste contractors.
Buildings Design	Sustainable building standards	BREEAM to be carried out on all new buildings and major refurbishments: new buildings to achieve "Excellent", major refurbishments to achieve "Very Good"				Maurice Wohl Clinical Neuroscience Institute assessed as "Excellent" at design stage.	Champion Hill assessed as "Outstanding" for new buildings and "Excellent" for existing building at design stage.			
ISCN Principle 2										
Carbon	Electric vehicles	Estates & Facilities vehicles replaced by electric vehicles		No	2013/14	No	No	Vehicles ordered	Positive	Electric vehicles have been ordered.
	Carbon emissions	Reduce CO ₂ emissions by 43% by 2020, compared to 2005/06 baseline	Tonnes CO ₂ e	52,389	2005/06	39,416	39,013	36,475		Several energy-saving and low-carbon projects have been carried out at King's, e.g. PV, CHPs and LED lights.
	Carbon emissions per FTE		Tonnes CO ₂ e	2.41	2005/06	1.36	1.27	1.12		Carbon emissions have been decoupled from growth.
	Carbon emissions per £ income		Tonnes CO ₂ e	0.14	2005/06	0.06	0.05	0.05		Carbon emissions have been decoupled from growth.
Food	Fairtrade Accreditation	Achieve Fairtrade University accreditation		No	2015/16	No	No	Yes	No change	Fairtrade Policy was signed, Steering Group met quarterly, application sent in July 2017.
	Sustainable Food Policy	Develop Sustainable Food Policy		No	2015/16	n/a	No	Yes		Sustainable Food Policy signed June 2017.
	Sustainable Restaurant Association (SRA) membership	Join SRA		No	2015/16	n/a	No	Yes		King's Food joined SRA in April 2017.
	SRA rating	Receive SRA star rating		No	2015/16	n/a	No	No		Questionnaire for rating started.
Biodiversity	Biodiversity Action Plan	Develop university-wide Biodiversity Action Plan		No	2015/16	n/a	No	No		Biodiversity Action Plan due to be developed in 2017/18
ISCN Principle 3										
Social integration	Sustainability Champions: Winning office teams	Increase sustainability awareness		14	2014/15	14	13	21	Positive	Increase in teams taking part in Sustainability Champions scheme, overhaul of Gold Award.
	Sustainability Champions: Winning laboratory teams			10	2014/15	10	15	25		Increase in teams taking part in Sustainability Champions scheme.
	Sustainability volunteering (hours volunteered by students)			195	2016/17	Not recorded	Not recorded	195		Students trained to audit Sustainability Champions, and assisted with Warp-It.
Commitments and resources for campus sustainability	Student Switch Off engagement (students pledged support)			554	2015/16	n/a	554	679	Positive	SSO campaign run in all halls (King's managed and third party)
	ISO14001:2015	Achieve ISO14001:2015 certification for Estates & Facilities		No	2013/14	No	Partial – Strand Campus only	Yes		Certification achieved for all sites in June 2017.

Targets for 2017–18

- Reduce absolute carbon emissions to achieve a **43%** reduction in Scope 1 and 2 carbon footprint from a baseline year of 2005–6 by 2020
- Achieve **60% recycling** by weight of office and residential waste
- **Establish baseline** for total annual operational waste produced by the university.
- Maintain **zero** non-hazardous waste to landfill
- Reduce consumption of water by **2% annually** by 2020 (cubic metres per staff/student FTE) from a 2013–14 baseline.
- Maintain **ISO14001:2015** accreditation for all Estates & Facilities directly managed sites.
- Maintain environmental pollution incident rate of **zero**
- Achieve **Level 4** of Flexible Framework
- Retain **Fairtrade University** accreditation
- Attain membership of the Sustainable Restaurant Association's **Food Made Good** programme
- Update and implement **Sustainable Transport Plan** for the university
- Carry out **BREEAM** assessments on all new buildings and major refurbishments as required by planning: new buildings to achieve minimum rating of **Excellent**, major refurbishments to achieve minimum rating of **Very Good**
- Implement **soft landings** procedure
- Develop **Biodiversity Action Plan** for the whole estate
- **1000 hours** of opportunities for students
- Maintain **Sustainability Champions** programme to engage wider university

Feedback and get involved

We welcome your thoughts on our first King's environmental sustainability report so please do get in touch with us with comments, or if you would like to get involved with the sustainability agenda at King's contact us via email sustainability@kcl.ac.uk.



Stay in touch

sustainability@kcl.ac.uk
kcl.ac.uk/sustainability
blogs.kcl.ac.uk/sustainability
twitter.com/KCL.Sustainable
facebook.com/kclsustainability
instagram.com/kings_sustainability

Additional resources

For more information on courses see kcl.ac.uk

King's London Collective brings together the expertise of King's academics researching and teaching on London's people, places and future prosperity. This includes a 'Green city, living city, sustainable city' database. For more information, see kcl.ac.uk/london

For information on King's world-class research see <https://spotlight.kcl.ac.uk/>

It's our deeds that define us