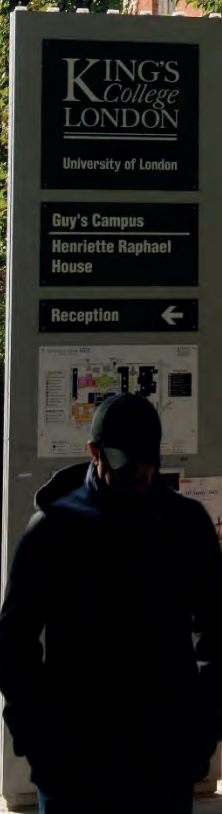


# Sustainable Development Goals Report 2020-21



This page was left blank intentionally.

This report covers activity from the academic period 2020-21 (from August 2020 to July 2021).



THE Impact Rankings 2021 - Score in each Sustainable Development Goal (SDG) - out of 100

Number of research outputs in each SDG between 2020 and 2021  
No available data for SDG 17

Number of teaching units relating to each SDG in 2020-21

**TIMES HIGHER EDUCATION**  
2021 IMPACT RANKINGS

**WORLD RANKING 11<sup>TH</sup>**

**TOTAL ENTRANTS**  
1,240 UNIVERSITIES - 98 COUNTRIES

**5<sup>TH</sup> IN THE UK**

**1<sup>ST</sup> IN LONDON**



King's is a **living wage employer** and has received several awards for its commitment to gender and LGBTQ+ rights.

**809 teaching units** related to the SDGs were delivered to students.

**220,000+** student engagements with units relating to SDGs.



King's has **fully divested from all fossil fuels** almost two years ahead of schedule.

King's published **25,697 papers**, representing **5.4%** of the UK's research.

**10,738 papers** directly related to the SDGs (42% of King's research output).



# CONTENT

|  |           |
|--|-----------|
| <b>FOREWORD</b> .....                                      | <b>4</b>  |
| <b>INTRODUCTION</b> .....                                  | <b>4</b>  |
| <b>METHODOLOGY</b> .....                                   | <b>5</b>  |
| <b>SDG1: NO POVERTY</b> .....                              | <b>7</b>  |
| <b>SDG2: ZERO HUNGER</b> .....                             | <b>9</b>  |
| <b>SDG3: GOOD HEALTH AND WELLBEING</b> .....               | <b>11</b> |
| <b>SDG4: QUALITY EDUCATION</b> .....                       | <b>13</b> |
| <b>SDG5: GENDER EQUALITY</b> .....                         | <b>15</b> |
| <b>SDG6: CLEAN WATER AND SANITATION</b> .....              | <b>17</b> |
| <b>SDG7: AFFORDABLE AND CLEAN ENERGY</b> .....             | <b>19</b> |
| <b>SDG8: DECENT WORK AND ECONOMIC GROWTH</b> .....         | <b>21</b> |
| <b>SDG9: INDUSTRY, INNOVATION AND INFRASTRUCTURE</b> ..... | <b>23</b> |
| <b>SDG10: REDUCED INEQUALITIES</b> .....                   | <b>25</b> |
| <b>SDG11: SUSTAINABLE CITIES AND COMMUNITIES</b> .....     | <b>27</b> |
| <b>SDG12: RESPONSIBLE CONSUMPTION AND PRODUCTION</b> ..... | <b>29</b> |
| <b>SDG13: CLIMATE ACTION</b> .....                         | <b>31</b> |
| <b>SDG14: LIFE BELOW WATER</b> .....                       | <b>33</b> |
| <b>SDG15: LIFE ON LAND</b> .....                           | <b>35</b> |
| <b>SDG16: PEACE JUSTICE AND STRONG INSTITUTIONS</b> .....  | <b>37</b> |
| <b>SDG17: PARTNERSHIPS FOR THE GOALS</b> .....             | <b>39</b> |
| <b>SDGs DATASET</b> .....                                  | <b>41</b> |

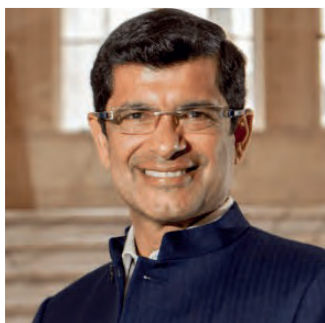


# FOREWORD

At King's, the belief that we can use our expertise as a force for good has defined our past and continues to shape our future.

We strive to contribute to the **United Nations Sustainable Development Goals** (SDGs) across the whole university, including through our research, education and service to society. Our research delivers insights and solutions that have the power to advance and accelerate global progress, our teaching enables students to become rounded critical thinkers who strive for social change, and our commitment to social change and service to society drives tangible impact locally, nationally and internationally. Our rigorous policies and processes guide our decision-making and ensure our ethos is reflected in our operations.

We will continue to work within and beyond King's, together with our network of partners, to enable our students, staff and alumni to make a meaningful difference and help to build a better world for all.



**Professor Shitij Kapur**  
President & Principal



**Professor Funmi Olonisakin**  
Vice President  
(International, Engagement & Service)

# INTRODUCTION



King's is a world-leading university dedicated to finding solutions to urgent global challenges through our teaching, research and collective impact. We seek to align our work with the United Nations Sustainable Development Goals to support the global effort to build a better world by 2030 and demonstrate the university's contribution to society in London, in the UK and the world at large. This report showcases King's contribution to achieving the SDGs.

# METHODOLOGY

This report aims to provide an overview of King's College London's contribution towards the UN SDGs. It builds on data from a multitude of sources across the university and covers a wide range of initiatives around King's research, educational offer and operations, as well as its service and engagement activities. It is a collective attempt to demonstrate the breadth and depth of King's impact towards making the world a better place but will not cover everything that our community of students, staff, alumni and partners achieve. This report covers the academic year 2020-21. Unless otherwise stated, data and case studies will be derived from this timeframe.



**RESEARCH**

**EDUCATION**

**SERVICE AND  
ENGAGEMENT**

**OPERATIONS**

## Data on research outputs

All the data on research outputs has been extracted from public sources. The data on research outputs is mostly based on datasets extracted from scival.com and covers both 2020 and 2021 calendar years. The report includes:

- The number of King's publications for each SDG
- The number of King's publications compared to all UK publications for each SDG
- King's field-weighted citation impact (FWCI) metric, which compares citation of King's publications with citation of all publications worldwide for each SDG. A baseline of 100 is used here
- The number of internationally co-authored papers for each SDG
- The number of patents citing King's research

The report includes the number of policy sources that refer to King's SDG-related research between 2020 and 2021 based on a dataset from overton.io and references to King's research outputs in the media (news, social media, etc.) between 2020 and 2021 as extracted from altmetric.com. For some SDGs, additional data might be included. For example, the overall number of papers co-authored with academics from universities in low and lower-income countries between 2020 and 2021 was also included as a metric for SDG

## Quantitative data

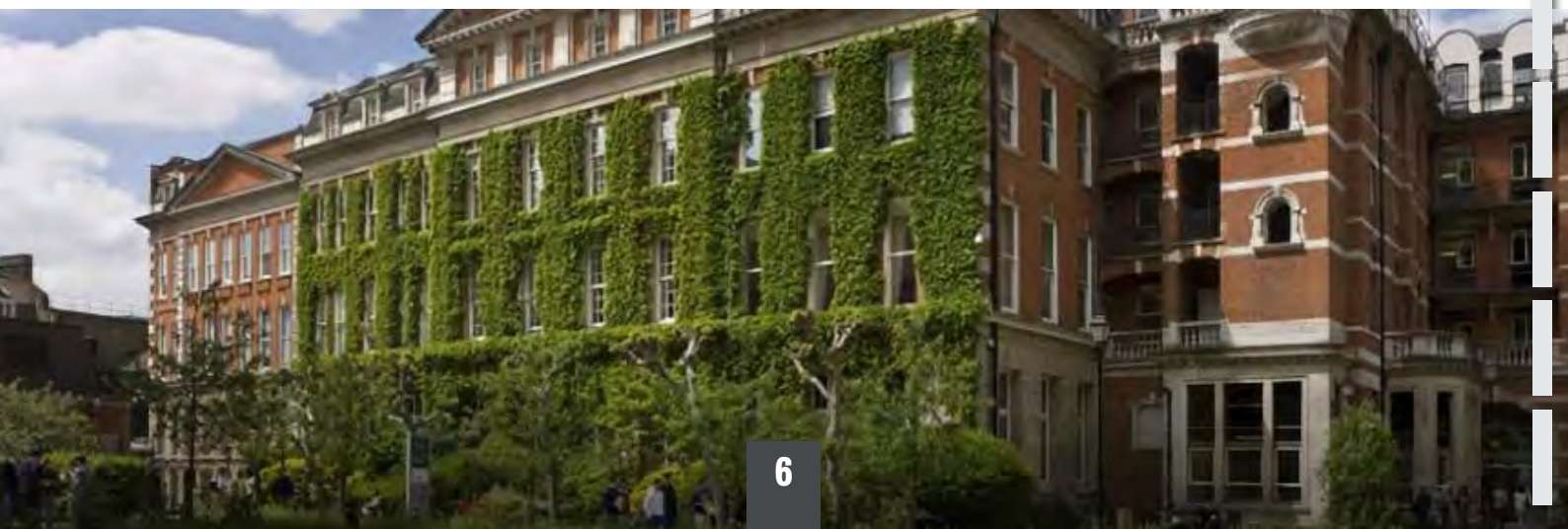
The report includes additional quantitative data, including, for example, numbers of students, research income and data on King's operations. These metrics were provided by specialist teams across the university. Student numbers are based on figures reported to government bodies. Operational data has been provided by King's Directorate of Estates & Facilities. Additional data on spin-offs and research was provided by the King's Research Management & Innovation Directorate.

## Data on SDGs-related modules

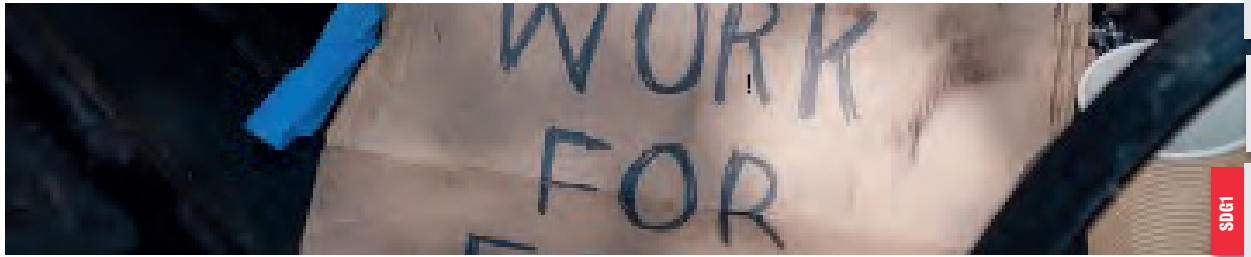
In line with King's Vision, we strive to equip students with the skills and knowledge needed to build a sustainable future and become the changemakers of today and tomorrow. The **Education for Sustainable Development (ESD)** framework provides a unique opportunity to deliver on this by giving 'learners of all ages the knowledge, skills, values and agency to address interconnected global challenges, including climate change, loss of biodiversity, unsustainable use of resources and inequality' (UNESCO). Universities are key players in driving ESD due to our core work in education and our ability to bring people from different disciplines together to develop solutions to today's most complex problems. A **King's review** was conducted based on a student-led curriculum-mapping exercise and has identified many examples of ESD learning and a broad array of SDGs being taught in each of our faculties and across the informal curriculum. The project updates our previous work on **mapping climate and sustainability modules** as part of the King's Climate Action Network in 2020-21 and our 2016-17 audit of modules against the SDGs, which was reported on in our annual **Environmental Sustainability Report**. Each of the 990 teaching units were assessed based on their relations to the SDGs. A distinction was made between units having a direct relation and indirect relation depending on whether the unit completely embedded the SDG in the teaching or whether the unit covered the SDG more generally, allowing students to build a basic knowledge around the SDG. The number and proportion of units relating to each SDG is based on data from this audit. Cross analysis with student records then gave a view of the number of student engagements with each SDG. Student engagement numbers do not equal student numbers as each student can engage with SDGs through several different modules.

## Case studies

Case studies were compiled from specialist teams across the university. A review of relevant university webpages, news outputs and data submitted to world rankings and assessment frameworks was conducted to complete the datasets. This report aims to provide an overview of King's contribution towards the SDGs. There are many more examples and case studies that have not been included. More examples of our engagement with the SDGs can be found on our SDGs Hub.



1 NO POVERTY



SDG1

# SDG1: NO POVERTY

## End poverty in all its forms everywhere

### Research

**Better measurement of poverty means better policymaking:** There is widespread agreement that tackling poverty is an important policy matter. But how poverty is measured is critical to thinking about how it should be tackled. Professor Hetan Shah, Executive Director of the Royal Statistical Society and a Visiting Professor at King's Policy Institute, was a member of the independent Social Metrics Commission, which reviewed how poverty is measured and put forward recommendations to change the traditional measure. This research means that policymakers can stop arguing over definitions and start arguing about how to address poverty.



"The change in measurement leads to a profound change in our understanding of who is poor: it indicates far fewer pensioners are living in poverty than the old measure suggested, while also pointing to disability as a much bigger feature than was previously recognised."

**Hetan Shah, Executive Director of the Royal Statistical Society and a Visiting Professor at King's Policy Institute**

**Poverty, Inequality & Inclusive Growth research group:** The group studies the paradox of persistent poverty and inequality in emerging economies, asking: what makes growth more equitable? How can poverty be ended? The group considers the causes of poverty in emerging economies and the factors that prevent people from escaping it.

**The Poverty Paradox: Helping the world's poorest people:** Analysis of the global poverty data carried out by King's Department of International Development found that, contrary to the established understanding, most of global poverty is now in middle-income



countries. The results continue to inform the understanding of policymaking staff in key organisations working to end poverty, such as the World Bank, Oxfam, ActionAid and Save the Children.

"Because of the work of King's researchers, we became aware that three-quarters of the world's poorest people are in middle-income countries. This recognition led to an immediate adjustment in the thinking of official development agencies and made us think about how we should address poverty in middle-income countries over the next 20 years."

**A former board member at the World Bank**

**181** publications

**4.7%** of the publications in the UK

**1,236** citations

**190** policies citing King's research

**RESEARCH METRICS**

**56%** of the papers relating to SDG1 were internationally co-authored (101 papers)



**7%** of King's publications are co-authored with academics from universities in low- and lower-income countries (1,805 papers across the SDGs)

**2** patents citing King's research

**399** mentions of King's research in the media

### Education

**Study programmes:** Understanding that poverty is multifaceted, several departments at King's, including the Department of International Development and the Department of Political Economy, have developed expertise directly addressing SDG1. Students at King's thus benefit from this diversity with modules such as Introduction to Development Studies, Political Economy of Inequality, and Poverty, Inequality and Social Policy in Emerging Economies, which entails discussion of the conceptualisations of poverty, inequality, insecurity and policy responses with particular reference to emerging economies.





## EDUCATION METRICS

**180** teaching units relating to SDG1

43 directly and 137 indirectly

**6,200** students received financial support

18.6% of the student body

**11,951** student engagements with units relating to SDG1

21.6% of total student engagement

SDG1

## Service and engagement



**The Ethics of Universal Basic Income (UBI) in a Changing Economy workshop:** Could the introduction of a universal basic income help eliminate poverty, encourage more entrepreneurs and boost wellbeing in society? These questions and more were addressed in an online workshop hosted by the Department of Political Economy at King's.

**KCL On The Streets:** KCL On The Streets is a student-led homelessness action society, whose goal is to help London's homeless community through outreach sessions and fundraising events.



**Bridging the gap between homelessness and a home:** In the latest King's Civic Challenge, a team bringing together King's staff and students with the Cardinal Hume Centre was awarded the health and wellbeing prize. The Cardinal Hume Centre in Westminster challenged the team to find new ways to connect with young adults in the borough at risk of homelessness. The solution was to co-produce a short film with young people to highlight issues that might lead to homelessness, how to tackle them and where to get help.

"There is a great need to support and guide these young people who are worried about their housing. We want to be part of the solution and tackle this problem before it becomes a crisis."

Cardinal Hume Centre team,  
King's Civic Challenge final



## Operations

### King's scholarships and hardships support:

Several hardship funds are available to support eligible students who need extra financial support with their day-to-day living costs to continue their course at King's. A number of scholarships and bursaries are also available at all levels of study, some directly targeting underrepresented groups.

**Money Mentors:** Money Mentors are current King's students who have a passion for helping their peers. The Money Mentors have been trained by the Advice & Guidance Team and external partners on the main sources of statutory funding, money management skills, student discounts, hardship funds and financial safety online. They offer guidance on how to make a budget, where to get the best discounts and deals in London, how to save money and where to get help if needed.



**Laptop loans against digital poverty:** The digital divide is the gap between those who have access to modern information and communication technology, such as laptops and the internet, and those who do not. The topic was investigated in 2019 by academics from King's Policy Institute jointly with students. King's Libraries & Collections has invested in facilities for student loan laptops in most of King's libraries. With approximately 250 available, the system contributes to making laptops, a necessary tool for successful studies, available to all students.

**4** ventures supported by King's Entrepreneurship Institute



# SDG2: ZERO HUNGER

## End hunger, achieve food security and improved nutrition and promote sustainable agriculture

### Research

**Next-gen proteins tipped for the mainstream:**

A team of biorenewable manufacturing experts, led by Dr Miao Guo from King's Department of Engineering, is focusing on sustainable food engineering and exploring how to optimise the food manufacture process. The team's computational and experimental work is developing new technologies that recover valuable and nutritious content from waste by-products from other industries.



examines the association between wage-setting policy and food insecurity across 139 countries. Researchers were able to conclude that wage-setting policies may be an important intervention for addressing risks of food insecurity among low-income workers.

**Unlocking plant resources to support food security and promote sustainable agriculture:**

Biodiversity is essential to food security and nutrition locally and globally. By reviewing the global state of edible plants and highlighting key neglected and underutilised species, this project attempts to unlock plant food resources and explore the role of fungi. Combined with a wealth of traditional knowledge about their uses and practices, fungi could help support sustainable agriculture while ensuring better

protection of the environment and the continued delivery of its ecosystem services.

**Population Health & Nutrition Research Group:**

Building on a multidisciplinary team, the group pursues observational and interventional studies in the UK, Africa and Latin America Caribbean. The group uses community-based participatory methods and systems perspectives to engage with the complex socio-cultural contexts that drive disparities in health and access to health care, especially relating to nutrition. Past projects have included exploring the relation between disability and food bank use in the UK and understanding the operational characteristics of independent charitable food parcel provisioning in local authorities across England.

### Education

**Study programmes:** At King's, education around SDG2 is covered through specific aspects of the curriculum in some of the university's departments, including the Department of International Development and the Department of Political Economy. As a university in the heart of London with a strong expertise in the health sector, King's also contributes to research and education in dietetics and nutritional sciences. The Dietetics study programme, for example, aims to equip graduates who already have a BSc or MSc in Nutrition with the knowledge, skills and attitude required to practise as an accredited and registered dietitian.

"Being surrounded by lecturers who are extremely passionate about dietetics has made the course more enjoyable. My confidence has grown tremendously throughout the course with the support of the faculty, which encouraged me to apply for the role as Student Representative for the British Dietetic Association – and be successful."

Reema, Dietetics MSc student

**The Governance of Food (In-)Security During and Post-COVID-19:** This open seminar, ran by King's Transnational Law Institute, examined the effects of COVID-19 on the global food system and their implications for the future of global food security governance.

"The ambition is to not only provide next-generation food to address global hunger but also to discover how we can work effectively with industries and those existing infrastructures where there is space for innovation without having to create a completely new infrastructure. Resource recovery technology could, for example, be adapted to provide food or fuel for populations in the Global South."

Dr Miao Guo, Lecturer in Engineering

**Wage-setting policies, employment and food insecurity:** Looking at data from 492,078 people, this international research project

155 publications

74% of the papers relating to SDG2 were internationally co-authored (114 papers)

RESEARCH METRICS

2.6% of the publications in the UK

2,729 citations

2,973 mentions of King's research in the media

196 policies citing King's research

## EDUCATION METRICS

**127** teaching units relating to SDG2  
26 directly and 101 indirectly

**5,427** student engagements with units relating to SDG2  
9.8% of total student engagement

## Service and engagement

**Tackling food insecurity in King's local communities:** King's students and staff directly contributed to tackling food insecurity in King's local community:

**Funnel Support Network:** Karim Ali, a Pharmacology student, has been supporting mutual aid groups in King's home borough of Southwark through the innovative Funnel Support Network, which he helped develop. By joining the dots between hyperlocal donation stations across Southwark and the charities that redistribute food donations, Funnel aims to help those most in need and reduce food insecurity.



**Support to the Borough Food Cooperative:** Dr Barry Quinn, Clinical Senior Lecturer at King's, took part in King's Civic Challenge and worked with a team of students and alumni to support the Borough Food Cooperative, a local initiative that distributes donated food at subsidised prices to more than 400 families in South London to help reduce food bills and tackle food insecurity.

"I will look back at this period and know that I made a small, but hopefully useful, contribution to people's lives in South London. I think that all students and staff would benefit from some experience in serving society as it puts our own worries into perspective."

**Dr Barry Quinn, Clinical Senior Lecturer in Simulation and Team-Based Education and Honorary Consultant in Restorative Dentistry in the Faculty of Dentistry, Oral & Craniofacial Sciences**



**Food4Good:** Partnering with Charity Begins at Home, a local soup kitchen that serves food to the community every Friday near Charing Cross in London, the student-led food waste project is distributing unsold items from King's food outlets to those in need.

"My project, Food4Good, was born out of frustration at the status quo in our food system – a system where wastefulness so seamlessly co-exists with food insecurity."

**Anna Shtyrba, student and creator of Food4Good**

**King's entrepreneurial ventures supporting aggreotech:** Programmes from the King's Entrepreneurship Institute, such as the King's20 Accelerator and the Idea Factory, are providing a platform for King's students, staff and alumni to develop and scale their ventures. A number directly address SDG2:



**Guna Organics:** Guna Organics works to lift up women farmers through vertical integration of organic farming and solar technology. Since 2014, it has played a key role in the development of India's first eco-village in Ladakh. It has enhanced livelihoods by 33% and reversed migration from 27 to 75 households in the eco village.

**Vitae (formerly HydroGrow):** The urban sustainable hydroponics initiative helps tackle issues around water and food insecurity from overusage and wastage. Vitae aims to develop a space-saving smart garden made from 100% recycled plastic. The Halo uses advanced hydroponic tech to grow plants 40% faster using 90% less water and is sold 40% cheaper than its competition.



"Vitae was born from the idea that agriculture shouldn't be the thing destroying the environment. But it is. Agriculture is the second most polluting industry in the world and the most water consuming."

**Founder of Vitae**

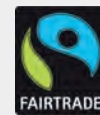
**2** ventures supported by King's Entrepreneurship Institute

## Operations



**Free food package deliveries:** Between 2020 and 2021, King's Food delivered approximately 300 free 10-day grocery packs for students in halls who needed to isolate. These included fresh fruit and vegetables and fresh and ambient products.

**University commitment to sustainable and healthy food:** King's Sustainable Food Policy commits King's to addressing the impacts arising from the university's catering and hospitality operations while providing healthy and sustainable food for students, staff and visitors. This includes an increased focus on local and independent suppliers, the removal of palm oil from food produced in-house, engaging with students and the local community to redistribute unsold food, removing beef from restaurant menus, and serving vegan and vegetarian options as the default options at meetings and events. After opening one of the first fully plant-based university cafés at Bush House, King's Food also continued to increase meat-free options at other outlets, with 70% of the King's Choice menu now being vegetarian or vegan.



**Fairtrade accredited university**

King's has been elected by



as one of the **Most Vegan-Friendly Universities in the UK**

King's Food is a member of the **Sustainable Restaurant Association** and takes part in its **Food Made Good** rating



**85.2**

**tonnes of food waste were sent to anaerobic digestion plants (out of 1,065 tonnes of total waste generated)**

**Reducing and managing food waste on campus:** King's Food is committed to tackling food waste through its 50@50 initiative, in which selected food products close to expiry date are reduced to clear and marked with a 50% discount 50 minutes before closing. King's Food began work on piloting the Too Good To Go app to reduce food waste. The university has also introduced separate food waste collections. Food waste is sent to an anaerobic digestion plant, where food is broken down into special digestion tanks and produces gas that is burnt in a generator to produce electricity.



# SDG3: GOOD HEALTH AND WELLBEING

Ensure healthy lives and promote wellbeing for all at all ages

## Research

With expertise in Dentistry, Neurology, Psychiatry, Psychology, Medicine, Nursing, Midwifery and many other fields, King's is one of the leading universities in the world for medical and health sciences. The university accounts for nearly 500 research groups, which are spearheading innovation in the sector and directly contributing to making the world healthier.

**Centre for Gene Therapy & Regenerative Medicine:** Part of the Faculty of Life Sciences & Medicine, the Centre acts as a focus for cutting-edge stem cell research taking place across King's and its NHS Trusts partners. The Centre has now opened its new Advanced Therapies Accelerator thanks to a £10 million grant from Research England, which aims to build capability and partnerships for cell and gene therapy – specifically in cell therapies for cancer; immune tolerance in autoimmunity and transplantation; and gene therapy for dementia.



**Student Mental Health Research Network (SMaRteN):** SMaRteN is a national research network funded by UK Research and Innovation and based in the Institute of Psychiatry, Psychology & Neuroscience at King's. It works with a range of researchers and focuses on furthering the understanding of and improving student mental health in higher education.

**Global, regional and national progress towards Sustainable Development Goal 3.2 for neonatal and child health:** Funded by the Bill & Melinda Gates Foundation, this research presents the findings of the Global Burden of Diseases, Injuries and Risk Factors Study conducted across 204 countries and territories to evaluate all-cause mortality and cause-specific mortality in children younger than five years of age, with multiple scenarios for child mortality in 2030 that include the consideration of potential effects of COVID-19 and a novel framework for quantifying optimal child survival.

**Transforming access to palliative care for under-served groups:** Research from King's Faculty of Nursing, Midwifery & Palliative Care has underpinned a global shift in how palliative care is considered, defined and delivered by helping realign regional, national and international policies. Much of the research impact has been underpinned by the development of the Palliative Outcome Scale. This impact was recognised across areas such as: (1) access to palliative care, especially for ethnically diverse groups in the UK; (2) delivery of quality palliative care in Africa; (3) standards of care for people living with HIV; and (4) identification of symptoms and concerns for people with dementia.

**Enabling a shift in the prevention and treatment of tooth decay worldwide:** Dental caries, the most prevalent disease globally, constitutes a major challenge throughout the life cycle. The King's-led Global Collaboratory for Caries Management has evolved into an international umbrella group, DentAlliance, leading the paradigm shift towards comprehensive preventive dental medicine.



**Voicing the unheard story of trafficked people to change health services:** King's provided baseline data on mental health and human trafficking and established that health services are in a unique position to identify, refer and provide care to trafficked people. The research identified barriers for trafficked people in accessing health services and a lack of training for healthcare professionals

### RESEARCH METRICS

**8.7%**  
of the publications in the UK

**7,194**  
publications

**62%**  
of the papers relating to SDG3 were internationally co-authored (4,454 papers)

**156,696** citations

**687** policies citing King's research

**32** patents citing King's research

**131,913** mentions of King's research in the media

on the specific needs of trafficked people. Researchers' work underpinned new guidance from the Department of Health & Social Care and Public Health England on identifying and responding to human trafficking. It informed the development of new training materials for healthcare professionals and enabled the inclusion of abuses from trafficking in the International Classification of Disease (ICD-11). King's research also provided the foundations for UK legislative changes on regulating healthcare for trafficked patients and increased public awareness around this subject.

## Education

With four faculties dedicated to health-related disciplines and more than 400 teaching units embedding aspects of SDG 3, King's offers a wide range of opportunities for students to develop their knowledge and gain skills that will help them have an impact in the health sector.

**GKT School of Medical Education:** The School trains the medical leaders of tomorrow. The School's medicine curriculum is groundbreaking in design and fully integrated. Blending biomedical sciences, population sciences and clinical practice, it provides early authentic clinical experiences to truly bring medicine to life. Equipped to address healthcare challenges on a local and global scale, many King's medical graduates become critical scientific thinkers, champions for mental health and leaders in service quality improvement.

**Faculty of Dentistry, Oral & Craniofacial Sciences:** King's hosts the largest dental faculty in Europe, rated in the top 10 in the world for dentistry. With more than 1,000 dental students, the Faculty has a clear critical mass. The sheer range of the Faculty's education and research offering underpins its mission to deliver the best possible oral health for society.

**Department of Global Health & Social Medicine:** Global Health & Social Medicine helps students seeking to improve health and wellbeing around the world by providing them with the tools and knowledge necessary to shape effective policies and healthcare delivery systems.

**Child & Adolescent Mental Health:** As part of King's Institute of Psychiatry, Psychology & Neuroscience's offering, this course is specifically designed for psychiatrists, paediatricians and psychologists, as well as allied professionals who wish to develop their knowledge, skills and research methodologies in child and adolescent psychiatry, child development, therapeutic interventions and service models. Taught by leading professionals in the field, students develop clinical skills and are able to contribute to clinically effective services.

### Health workforce innovation and training:

**Meet the Expert series:** In a swift response to COVID-19, King's Health Partners grouped vital resources on King's Learning Hub, including those for redeployed staff, and developed the Meet the Expert series with the European University Hospital Alliance.

### Knowledge exchange with local health sector:

Working with South East London Clinical Commissioning Group and the Health Innovation Network to facilitate systemwide learning and exchange, King's hosted a series of primary care webinars sharing COVID-19 and non-COVID-19 knowledge.

### Cardiovascular and respiratory experts

**training:** The Cardiovascular and Respiratory Partnership Programme has delivered virtual short courses and developed virtual training so trainees can access all opportunities irrespective of their work venue.

## Service and engagement

**King's Health Partners:** The group, bringing together NHS Foundation Trusts with King's College London, published a new report covering its most recent impact across fields. The report provides a themed selection of the group's achievements in year one of its new five-year plan (2020-25), which aims to deliver better health for all through high impact innovation.

**The Friendship Bench:** King's researchers identified an unmet need for the recognition and treatment of depression in Zimbabwe. Together with local and international partners, the Friendship Bench – an intervention based on King's problem-solving therapy – was developed and delivered through primary healthcare in community settings with extremely positive results. An evaluation of the intervention provided a solid platform that has underpinned increased funding to roll out the intervention across Zimbabwe and beyond, to countries including Kenya, Malawi, Zanzibar and the US. It was recognised in the SDG action plan and recommended by UNAIDS. To date, at least 63,000 people have received the intervention, leading to improved mental health globally.

### ASSET NIHR Global Health Research Unit on Health System Strengthening in Sub-Saharan Africa:

The group brings together healthcare specialists with social scientists, health economists, information technologists and implementation scientists, looking for practical ways to improve the coverage and quality of care through health system-strengthening interventions. The ASSET NIHR Unit is led by King's with partner institutions in Africa and Mindwave Ventures as the technology development partner.

**MedTech and health innovation:** King's has developed strategic partnerships with industry – such as GSK and USB Medical – and nurtured clinically relevant spinouts in MedTech and the health sector, including Neurogeneus (gene therapy for neurodegeneration), Fibrodyne (cell therapy for scarring), Quell Therapeutics (cell therapy for transplant tolerance and auto-immunity) and Adaptate. King's Health Partners also developed partnerships with health industries such as Siemens Healthineers and spearheaded innovation, including three National Institute for Health Research i4i awards, and the Hypervision Surgical spinout, which uses photonics alongside AI to guide cancer surgery.

**46 ventures supported by King's Entrepreneurship Institute**

**Make Do Play and Creative Breaks:** The programme encourages King's community to take part in creative activities for their wellbeing. In 2020-21, activities such as Creative Prompts and Creative Workshops provided online opportunities and inspiration for everyone to take a creative break during their week. Make Do Play was also set up to support Creative Breaks, a pilot programme aimed to improve staff and student wellbeing by encouraging everyone to put aside one hour per week to switch off, log off and take part in a range of creative activities.

## EDUCATION METRICS

402

teaching units relating to SDG3

142 directly and 260 indirectly

19,117

student engagements with units relating to SDG3  
34.6% of total student engagement

3,846

graduates in health disciplines

## Operations

**Guaranteeing access to health services:** King's supports the physical and mental wellbeing of its community through a range of programmes and health services. Students and staff members have access to the King's College Health Centre, free medical consultations, free eye tests and free dental treatment alongside support for those seeking to stop smoking or looking for mental health advice. Our Employee Assistance Programme offers independent, free, confidential advice on wellbeing and life events.



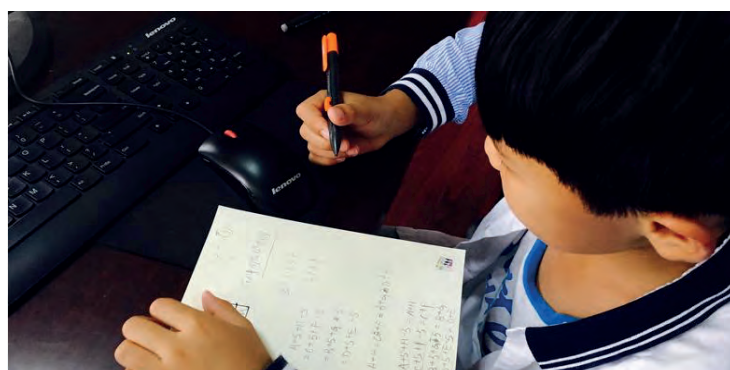
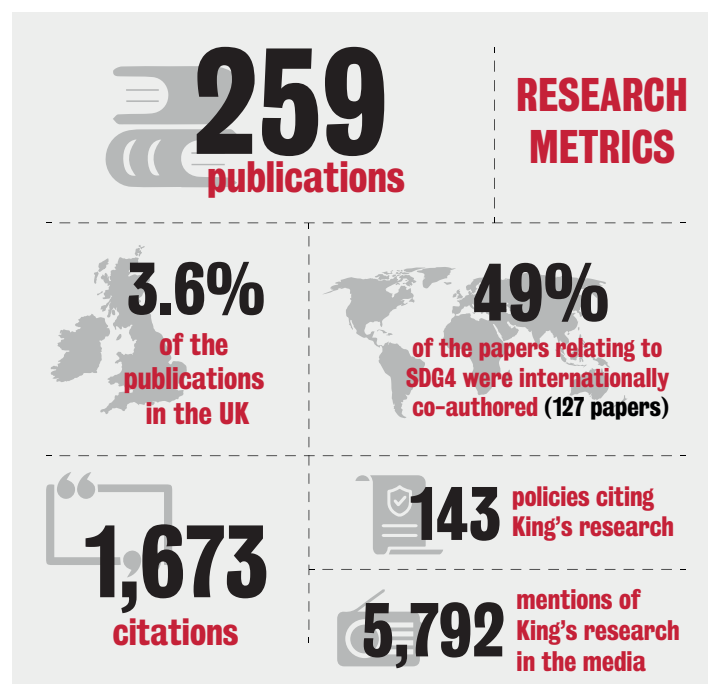
**Promoting health and wellbeing through sport:** King's operates three gyms and four sports grounds across London. With the ambition to make King's the most active university in London, King's Sport & Wellness delivers a range of opportunities for students and staff to get involved in sport and physical activity, engaging more than 15,000 people across various programmes. Through King's Move, King's community members can redeem points that are won by being active for rewards. Social sport sessions are organised through the BeActive programme and exercise is used to improve mental health in the Active Wellness Scheme.

**Smoke-free campus:** All King's campuses – both indoor and outdoor spaces – have been smoke-free since the publication of our smoke-free policy in 2016.



## SDG4: QUALITY EDUCATION

Ensure inclusive and equitable quality education and promote lifelong learning opportunities for all



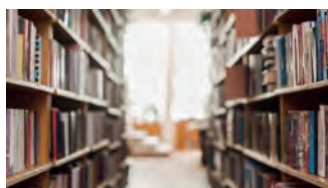
### Re-engineering the UK education system to fill the technical skills gap:

Research from King's Business School has investigated the root causes of the critical issues around technical and vocational education and training – which resulted in skills shortages in the economy and the underdevelopment of talent – and contributed to three major government education reviews. The recommendations put forward led to policy reforms that increased the proportion of students who achieve important qualifications in Maths and English; resulted in the creation of new national technical qualifications; and paved the way for a new Lifelong Loan Entitlement that will, from 2025, give people flexibility in how and when they access tertiary education.

### Perceptions of medical students towards online teaching during the COVID-19 pandemic:

King's researchers collaborated on research that aimed at measuring the uses, experiences, perceived benefits and barriers of online teaching during the COVID-19 pandemic. Researchers concluded that online teaching has enabled the continuation of medical education during a time of crisis and recommended that, moving forward, medical schools resort to teaching formats such as team-based/problem-based learning to maximise the benefits of both face-to-face and online teaching and to improve the efficacy of medical education.

## Research



**King's International Education Research Network:** The network aims to bring together academics, researchers and research students across and beyond King's to discuss critical questions about international education in an annual network

meeting, a lecture series and a PhD programme. The network is based in the School of Education, Communication & Society, which is at the forefront of global research agendas in international education and runs a successful programme in International Education.

**Centre for Research in Education in Science, Technology, Engineering & Mathematics (CRESTEM):** CRESTEM brings together a group of researchers who explore formal and informal practices of teaching, learning and engagement in diverse contexts to improve education in STEM. The group led several projects, including the COM 'n' PLAY Science Project – aiming to better understand the ways in which young people learn when they participate in informal activities – and the SCARI Computing Project, which aims to explore the factors that explain female performance and participation in secondary school level computing, with a particular focus on computer science exams.



## Education

**School of Education, Communication & Society (ECS):** King's has been training teachers for more than 120 years, with the ECS School having been at the forefront of teacher education and education research for more than 40 years. The school provides programmes of study (including postgraduate courses in Education and Education Management) that help professionals critically analyse research and effectively respond to changes in thinking and policy in their fields. The school also provides a PGCE initial teacher training programme leading to qualified teacher status for teaching in secondary schools (ages 11-16).

### King's Professional and Executive Education and King's Summer School:

King's continues to be recognised as one of the largest providers of Continuing Professional Development in the UK. King's Professional & Executive Development works with private and public sector organisations nationally and internationally to develop and deliver open programmes and customised initiatives. Similarly, Summer Programmes at King's lead the way in innovative short courses in international education.

**King's Online:** Through King's Online, students are able to earn a degree from anywhere around the world, as long as they have access to a reliable internet connection. Being able to fit studies in around existing life and work commitments is one of the many benefits of studying online. There are six entry points per year, giving students the flexibility to commence their studies at a time that works best for them. Students can also access free online courses hosted on FutureLearn and created with King's academics, featuring the latest research on a range of topics, from Shakespeare and forensic science to the modern judiciary and Portuguese.

"The unique structure of this programme has granted me with support along with a lot of self-learning to become confident in my writing abilities, research skills and presentation skills. I feel more confident in my marketable skills as well as ready to embark on my doctorate studies after a few years."

Salma, King's Online graduate

students in key stages 3, 4 and 5, encouraging them to pursue careers in medicine, dentistry and healthcare. Outreach for Medicine runs in parallel to the King's flagship Widening Participation medicine initiatives: the Extended Medical Degree Programme and the Enhanced Support Dentistry Programme.



**Transforming Access and Student Outcomes in Higher Education (TASO):** The Policy Institute at King's incubated one of the newest affiliates of the What Works Network – Transforming Access and Student Outcomes in Higher Education (TASO), which is being set up in partnership with Nottingham Trent University with funding from the Office for Students. TASO published its first evidence synthesis, which included a range of research to understand the strength of evidence underpinning activities. The report kicks off a funding round where TASO will start to deliver research to bridge the gaps identified.

**Centre for Innovation in Teacher Education and Development (CITED):** CITED works with all those involved in teacher education and development wherever they are based to improve the professional preparation and continuing development of school teachers. It is a unique partnership between King's College and Columbia University that demonstrates both universities' commitment to making a difference in the field.

**Partnership for Digital Learning and Increased Access (PADILEIA):** King's led the formation of PADILEIA, which aims to meet the educational needs of a mobile and digitally literate refugee population in Jordan and Lebanon. PADILEIA delivers blended foundation and short courses and has launched eight courses designed by King's Online and King's Faculties on FutureLearn. To date, over 13,000 self-identifying refugees and disadvantaged young people have participated in one of these courses, and more than 1 million learners worldwide have enrolled onto one of the PADILEIA courses. In addition, some of the courses have been included in the Department for Education's Skills Toolkit and the Grow with Google initiative, allowing them to reach significantly more beneficiaries.



"PADILEIA was set up to be an innovative programme that brought together universities, NGOs and the private sector, with local partners playing a key role in co-designing the programme and its delivery. In addition to pedagogical innovation on student-led content development and curriculum, PADILEIA also led to the creation of bespoke and sustainable spaces for blended delivery and student services that provided a holistic support model. I am extremely proud to have been part of this transformational programme that impacted so many lives, not only in Lebanon and Jordan but also in the UK and globally."

Dr Tania Lima, Director of Global Engagement and PADILEIA Lead

**Promoting lifelong learning through public events:** Every year, King's hosts a multitude of ad-hoc and programmed events that are open to the public, including conferences, public lectures, exhibitions, seminars and workshops.

**Language Learning and Teaching Seminar Series:** This seminar series provides a forum for language teachers of all levels to engage with theory and research of relevance to language teaching practices. Guest speakers present empirical researches and theoretical perspectives on a range of issues and applications in areas both on and on the peripheries of the usual postgraduate language teaching and applied linguistics curriculum.

**Teacher Education and COVID-19:** This seminar explored the impact of the pandemic on initial teacher education in England and beyond, including how pedagogies adapted as the removal of the practicum relocated learning communities to new online spaces, the challenges that the pandemic poses for initial teacher education and the opportunities afforded by a new digital pedagogy.

**Education & Society Dialogues:** The high-level series of research-informed events brings together academics and university leaders, education professionals, public policymakers and regulators, and media representatives. Reflecting the interdisciplinary nature of research and teaching at the School of Education, Communication & Society, which focuses on education in its broadest sense, the series aims to identify and address key contemporary issues within the broad area of 'education and society'.

24 ventures supported by King's Entrepreneurship Institute

## Operations

**Access to libraries and bibliographic resources:** King's manages six libraries, providing subject-specific resources to all. King's libraries offer free access to all students and staff and welcome visitors from the UK and around the world. King's accounts for over 1.2 million printed books and ebooks and more than 60,000 journals, reference tools, statistical data, official publications, maps, music scores, multimedia resources, photographs and manuscripts. The King's Foyle Special Collections Library holds more than 200,000 items ranging in date from the 15th century to the present day. All offer a wealth of opportunities for teaching and research, and together they form part of our documentary heritage.

## EDUCATION METRICS

12,589 graduates

4,013 first-generation students started a degree at King's

263 teaching units relating to SDG4  
33 directly and 230 indirectly

13,929 student engagements with units relating to SDG4  
25.2% of total student engagement

92% of graduates rated the quality of King's teacher training as very good or good in the National Student Survey

## Service and engagement



**K+:** The well-established, targeted flagship post-16 programme gives year 12 and 13 learners from non-selective schools in

Greater London a chance to experience various aspects of university study and increase their chances of getting to a top university over two years. The programme provides support and opportunities to students around academic success, university applications and transition. The programme also runs a range of events, including academic taster days, career insight days and a non-residential summer school. K+ graduates who complete an academic assignment and attend all of the events are eligible to receive offers from King's.

**Outreach for Medicine:** Outreach for Medicine works with students from non-selective state schools and runs a series of free events for



# SDG5: GENDER EQUALITY

## Achieve gender equality and empower all women and girls

### Research

**Gender Studies at King's:** The network brings together scholars and students across King's, whose research and teaching examines the influence of gender relations. It leads the university on gender-related studies and is responsible for a range of projects and activities, including the Gender, Justice and Memory project, which explores ways in which post-conflict remembering can contribute to unsettling and harmful gender norms that may have contributed to specifically gendered harms in conflict.



**Global Institute for Women's Leadership:** The institute works towards a world in which women of all backgrounds have fair and equal access to leadership. It brings together research, practice and advocacy to break down the barriers to women becoming leaders, while challenging ideas of what leadership looks like. Research from the institute covers a wide range of areas, including gender equality at work, women in the media, female political leaders, grassroots women leaders and gender and data.

"What is seen as leadership and who is able to become a leader should be determined free from any prejudice based on gender."

**Julia Gillard, Chair of the Global Institute for Women's Leadership and the only woman to have served as Prime Minister of Australia**

**Future of Legal Gender:** The project addresses the implications of different reform proposals for single-sex/gender activities, services and spaces, the wider equality agenda and other fields of statutory law. It also explores what legal gender status means to people and whether it matters in their everyday lives. Through research, Future of Legal Gender notably aims to contribute to ongoing policy and political discussions relating to current legal reform proposals, while influencing broader discussions about the changing character of gender and the contribution law can make to how it is changing.

**Section of Women's Mental Health:** The Section of Women's Mental Health undertakes mental health services and policy research with a primary focus on women's mental

health, the gendered determinants of mental health problems and the needs of women with mental health problems. The Section's work contributes to policymaking and healthcare practice, both nationally and internationally.



**342** publications

**47%** of the papers relating to SDG5 were internationally co-authored (161 papers)

**RESEARCH METRICS**

**5.0%** of the publications in the UK

**1,678** citations

**258** mentions of King's research in the media

**168** policies citing King's research



### Education

**Gender Studies Network seminar series:** This cross-departmental seminar series highlights contemporary debates in interdisciplinary Gender Studies, covering a wide range of topics through a global lens.

**Study programmes:** Gender equality is embedded across the whole curriculum and a wide range of degrees offer modules on gender and sexuality across the university:

**Gender and Development in the Global South:** This module introduces students to the geography of gender roles, relations and identities in countries of the Global South. It examines changing social and economic aspects of development on women's and men's



lives in relation to masculinities, household transformations, migration, poverty, employment, gender-based violence and development policy. The module approaches these issues from both theoretical and empirical perspectives, with a particular focus on the grassroots experiences of women and men.

**Critically Queer:** Critically Queer provides a broad overview of the diverse critical discourses around queer theories, while also paying close attention to some of the most pressing debates currently animating the field.

**Media, Gender and Culture short course:** As part of this Summer School module, students examine issues of gender and social change; power and representation; culture and agency; intimacy and mediation; and social critique and cultural politics. Teaching engages with a range of theoretical perspectives and equips students with the capacity to analyse a variety of media texts.

## Service and engagement

**The Women in Science Scholarship:** King's Faculty of Natural, Mathematical & Engineering Sciences is actively working to support women in science, technology, engineering and mathematics (STEM) in an attempt to address the imbalance of women working and studying in these areas. The scheme demonstrates the university's commitment to increasing the representation of female students in STEM subjects.

**Gender Action:** Gender Action was founded to transform school and nursery environments through an award programme promoting a whole-school approach to challenging stereotypes around gender imbalance in students' subject choices. Gender Action's framework aims to support teachers, schools, practitioners and nurseries to create a level playing field, with individuals working together for lasting cultural change.

"Gender Action is a unique opportunity for King's, our partners and universities across London to work with local schools to tackle the gender stereotypes that too often limit young people's horizons and prevent them from pursuing careers that might be perceived as unexpected or out of the ordinary. Young people should never be discouraged from choosing one subject over another because of their gender."

Baroness Deborah Bull,  
Former Vice Principal (London)

**The Haven:** Provided by King's College Hospital NHS Foundation Trust, The Haven is a network of three specialist sexual assault referral centres, which cover the whole of London and can help victims of rape or sexual assault with support, advice and counselling; emergency and follow up medical care; and forensic examinations to collect evidence.

**6 ventures supported by King's Entrepreneurship Institute**

## Operations

**Gender pay gap:** In 2021, the university reported a fall in its mean gender pay gap. The gap was down from 17.1% to 14.8%. The median gender pay gap has also fallen into

## EDUCATION METRICS

**264** teaching units relating to SDGs  
65 directly and 199 indirectly

**14,287** student engagements with units relating to SDGs  
25.8% of total student engagement



single figures for the first time, down from 10.1% to 9.6%. Since gender reporting was introduced, we have made consistent progress against our most direct comparator group of Russell Group Universities.

**Women in Science Scholarship:** King's Faculty of Natural, Mathematical & Engineering Sciences is working to address the imbalance of women working and studying in STEM. The Women in Science Scholarship scheme is designed to offer financial assistance to outstanding women during their undergraduate studies and to introduce them to various initiatives and activities taking place across the university in response to the issue.

### Support to parents and carers:

### Flexible working and family-friendly policies:

Enhanced and statutory leave arrangements are available to staff with caring or childcare responsibilities. King's family-friendly policies cover maternity, paternity, adoption, surrogacy, parental leave, shared parental leave and career breaks.

### King's Parents' Hub & Employee Assistance programme (EAP):

The EAP is a free support service for all staff and their immediate family members. The website provides parents and carers with an overview of the resources made available by the university to support them.

### Parenting rooms and financial support for carers:

Six private Parenting Rooms are available to anyone who needs to attend to the caring needs of a child. There are also facilities for King's staff who are breastfeeding mothers and King's staff can apply for places at nurseries run by our NHS partners. The Parents' & Carers' Fund and Carers' Career Development Fund are schemes for staff designed to mitigate the impact that career breaks might have on career progression and help parents and carers with the additional care costs incurred as a result of attending conferences or other important networking events. King's has made arrangements with Co-operative Childcare to provide a Childcare Voucher Scheme to its employees.

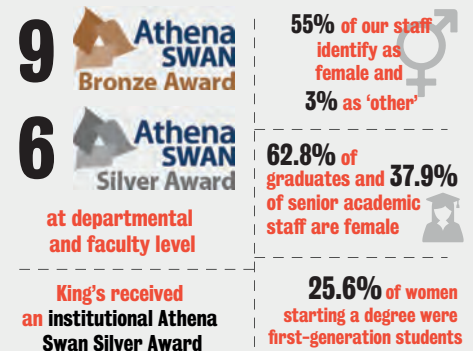
**NEST:** The network provides support to staff with parental or caring responsibilities through a range of events and an online community and by offering guidance and representation at strategic and policy level. The network's mission is to provide an inclusive environment by supporting all parents and carers, informing and inspiring the King's community and influencing change.

**Gender equality networks:** King's is proud of the various networks that operate at different levels of the university to tackle gender-related inequalities:

**Elevate:** The network exists to provide a formal platform for professional services staff at King's. The Network aims to address and challenge issues of gender inequality, providing a platform for staff to share their experiences and inform the university's policy and strategy.

**Women Entrepreneurs Network (WEN):** Only 1 in 3 UK entrepreneurs are female – a gender gap equivalent to 1.1 million missing businesses. WEN aims to achieve gender parity across King's Entrepreneurship Institute's activities. Each year, the network runs events and classes, including workshops on launching a business, coding classes and an annual two-day retreat.

**KCL Womxn in STEM:** The network of students and staff members aims to support diversity in STEM at the university. It promotes an intersectional and inclusive approach and works to represent women, non-binary and LGBTQ+ scientists at faculty level and fights for better working conditions. The network also hosts a wide range of events to provide members with an inclusive STEM sister support.





# SDG6: CLEAN WATER AND SANITATION

**Ensure availability and sustainable management of water and sanitation for all**

## Research

**King's Water Centre:** King's Water Centre aims to use science and innovation to tackle the world's water problems. Based in the heart of London, King's Water Centre brings together scholars and practitioners for a just and sustainable water future. Building on expertise from both social and physical sciences, the centre is home to research into water issues, the environment and development, exploring challenges of water governance from local to global scales.



**Without Water, There is No Life:** This project provides new insights into the politics of water provisioning in Karachi's informal settlements, an area that has been Pakistan's security



laboratory for decades and where water shortages and contaminations have pushed ordinary citizens to live with water scarcity. Researchers focused on the everyday practices that involve gendered insecurities of water.

**When is it Safe to Drink the Water?:** This research critically examines a set of prevalent myths about household water security in high-income countries, with a focus on Canada and the United States. The research argues that household water insecurity is a product of institutionalised structures and power, manifests unevenly through space and time, and is reproduced in places we tend to assume are the most water-secure in the world. Researchers identified five thematic areas

of future research to delineate an agenda for advancing scholarship and action.

**The Human Right to Drinking Water:** In an in-depth cross-country analysis commissioned by the European Parliament's Subcommittee on Human Rights, Dr Naho Mirumachi, Reader in Environmental Politics, contributed to unpack the impacts of large-scale agriculture and industry on the human right to drinking water and has called for renewed political commitment to ensure everyone can enjoy access to clean, drinkable water.

"The cornerstone to people having healthy, dignified and productive life is water, but two-thirds of the population experience water stress. Governments have a responsibility and legal obligation to ensure that their citizens have drinking water and they must not ignore this fundamental and universal human right. Equally, businesses must not turn a blind eye to the human cost that they are putting on many countries."

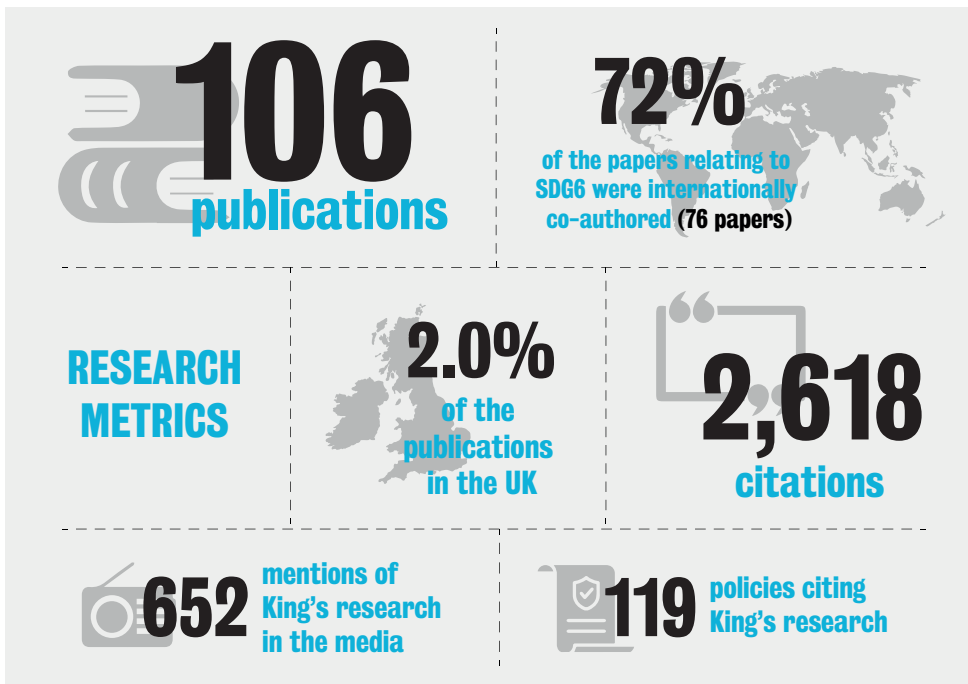
**Dr Naho Mirumachi, Reader in Environmental Politics**

## Education

**Study programmes:**

**Water & Development:** The module explores the relationships between water resources management and sustainable development. It specifically covers topics related to the politics of water use and allocation at the local, national and international levels. The module also allows students to work on contemporary policy responses to the problems of water resources management in developing country contexts.

**Desert Environments:** The module aims to provide a comprehensive understanding of the



characteristics of desert environments, the environmental problems found in these regions, the ways in which they are affected by human activities and the techniques that can be used to assess and mitigate them, using examples from both arid and semi-arid environments.

**WaterWords:** WaterWords is the blog of the specialist interdisciplinary research group hosted by the Department of Geography: King's Water Centre. It records and provides public access into the work, outputs and events of King's Water as well as the group's interactions with water issues around the world.

## EDUCATION METRICS

**131** teaching units relating to SDG6  
25 directly and 106 indirectly

**6,104** student engagements with units relating to SDG6  
11.0% of total student engagement



**Changing Political Economies in Large River Basins:** This webinar series provides insights into valuing water from a political economy perspective, looking at a selection of the world's key river basins and regions. Extending thinking beyond the 'water box', a wide range of speakers from multiple fields were invited to join the conversation.

**WaterWorld:** WaterWorld is a testbed for the development and implementation of land- and water-related policies for sites and regions globally, enabling their intended and unintended consequences to be tested in silico before they are tested in vivo. WaterWorld can also be used to understand the hydrological and water resources baseline and water risk factors associated with specific activities under current conditions and under scenarios for land use, land management and climate change. It incorporates detailed spatial datasets for the world, spatial models for biophysical and socioeconomic processes and scenarios for climate, land use and economic change.

**1** venture supported by King's Entrepreneurship Institute

## Operations

**Free drinking water:** Water fountains are available throughout the university. The King's REFILL mobile app and the KCLSU website map the free Water Refill Points across the campuses.

**Water consumption policies and consumption target:** Through King's Environmental Sustainability Policy, the university is committed to increasing water efficiency across its estate. Water efficiency is also embedded into the university's Sustainability Guidance for Capital Projects, along with a requirement to consider greywater systems such as rainwater collection. Similarly, King's Biodiversity Action Plan sets guidelines regarding water consumption of the flora and green spaces on King's campuses. The university achieved its target to reduce consumption of water by 2% each year over



the 2013-2021 period (cubic metres per total FTE – staff and students). In 2020-21, the university reported a 47% reduction in its water consumption compared to 2019-20. In June 2021, the water supplier was changed, which will improve accuracy of water consumption data, allowing better tracking of progress as well as the development of targeted water efficiency measures in the future.

**Waterless condensers:** Waterless condensers have been installed in chemistry and pharmacy laboratories, saving King's an estimated £3,300 in water costs or more than 1,500m<sup>3</sup> of water per year, as well as reducing the risk of floods. This initiative supports King's participation in the Laboratory Efficiency Assessment Framework (LEAF), allows users to estimate the impact of actions, and aims to help laboratories bring down costs, reduce the impact on the environment and inform users in the process.

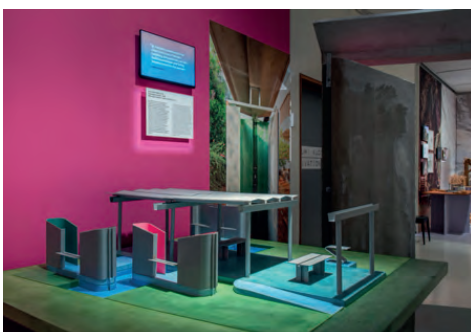
**340,453m<sup>3</sup>** of water was used in the university

**43** free drinking water dispensers in university buildings



## Service and engagement

**Water Loop Exhibition:** The circular Water Loop concept was inspired by a Loo Café initiative in Hyderabad, where much needed free public toilets are maintained by the income from an adjoining café. Commissioned by the British Council, the concept was developed, with the advice of researchers from King's Water, as an educational model for circular water systems. It was then taken forward by architecture and design students in India who aimed to adapt sustainable water sanitation systems in their region. Water Loop was also exhibited at the Louisiana Museum of Modern Art to raise awareness about water and sanitation.





# SDG7: AFFORDABLE AND CLEAN ENERGY

## Ensure access to affordable, reliable, sustainable and modern energy for all

### Research

#### Environment, Energy & Sustainability:

Brazil is at the centre of global debates about sustainability because the Amazon rainforest plays a crucial role in absorbing greenhouse gases and mitigating climate change. This research group focuses on Brazil's contributions to global environmental and energy policies, including the transition to a low-carbon energy matrix, as well as the domestic political economy of Brazil's environmental and energy regimes.



**King's Engineering and safer batteries for greener energy solutions:** Research from King's Department of Engineering covers a wide range of topics and applications relating to clean and sustainable energy storage, generation and distribution. Researchers at King's are, for example, providing insight that will help form policy and standardise industry requirements on lithium-ion batteries, aiming to inform how companies transport, store and recycle batteries safely. As these products become more popular and public transport systems become increasingly electrified, denser lithium-ion batteries will present a greater risk.

"If we understand how they degrade, we can build better batteries, make them safer and more efficient and optimise their lifetime."

**Dr Francesco Restuccia, Lecturer in Engineering**



**RESEARCH METRICS**

**158** publications

**1.0%** of the publications in the UK

**73%** of the papers relating to SDG7 were internationally co-authored (116 papers)

**92** policies citing King's research

**1** patent citing King's research

**1,874** citations

**761** mentions of King's research in the media

#### UK energy grid and renewable energies:

Research funded by the Engineering and Physical Sciences Research Council is improving ways in which renewable energy sources are integrated into the grid. It aims to overcome the unpredictable patterns of wind and water-generated energy and mitigate effects that may be a roadblock to renewable energy in future.

**One brick at a time:** An international team of scientists led by King's has developed a thermogalvanic brick that generates electricity as long as the two faces of the brick are at different temperatures. The compounds inside are not consumed, do not run out and can never be overcharged. As long as there is a temperature difference, there can be electricity.

"The idea is that these bricks could be 3D printed from recycled plastic and be used to quickly and easily make something like a refugee shelter. By the simple act of keeping the occupants warmer or cooler than their surroundings, electricity will be produced: enough to provide some night-time lighting and recharge a mobile phone. Crucially, they do not require maintenance, recharging or refilling. Unlike batteries, they store no energy themselves, which also removes the risk of fire and transport restrictions."

**Dr Leigh Aldous, Senior Lecturer from the Department of Chemistry**

### Education

#### Study programmes:

**The International Politics of Energy:** This module provides an introduction to the role of energy in the politics of development and international studies. The course introduces the main contemporary issues related to the energy sector, looking at the history and development of conventional and renewable energy resources, as well as how the global governance of energy has evolved.

**Engineering modules:** King's Department of Engineering built expertise on topics that directly support SDG7, from reducing reliance on fossil fuels and improving energy distribution systems to moving forward vehicle electrification. Within the department, teaching directly builds on this expertise with modules such as Energy & Sustainability and Energy Generation & Storage providing students with both the theoretical and technical skills to have an impact in the field.

**KCL Energy Society:** The KCL Energy Society is London's first student organisation dedicated to the business, consulting and policy side of the energy sector.



## EDUCATION METRICS

**101** teaching units relating to SDG7

14 directly and 87 indirectly

**5,822**

student engagements with units relating to SDG7

10.5% of total student engagement

## Service and engagement

**Fair Energy:** The climate crisis is getting worse every year and costs of living are rising. As part of Citizens UK's Fair Energy Campaign, student group King's For Change are running events to empower people to switch to cheaper, fairer and greener suppliers, aiming to end financial and environmental exploitation in the energy market.



"My role with Fair Energy and with King's For Change more generally has transformed my experience at King's. It is hard for me to imagine life at university without this work. My highlight has been the Fair Energy webinar we ran for King's Global Day of Service. We not only had King's staff and students present but also people from our local community – churches, schools, even our family members! It was wonderful to see how people got to know each other in the breakout rooms and how they engaged with the issues we were presenting."

Abigail Oyedele,  
BA Global Health and Social Medicine

**Climate Action Network Energy Champions Scheme:** The project, initiated as part of King's Climate Action Network, aims to develop a programme to engage students and staff in energy saving at King's, including carrying out actions, analysing data and running energy-saving campaigns.



**LightMountain:** With the support of Enactus KCL – which uses enterprise to solve pressing local and international social and environmental issues – LightMountain introduced Clean Cookstoves to help tackle the issue of air pollution resulting from harmful cooking devices in Tanzania. The Clean Cookstoves are efficient devices that reduce toxic emissions below the threshold imposed by the World Health Organization. These stoves allow users to save time and money by halving fuel consumption and cooking time. LightMountain has now distributed more than 80 Clean Cookstoves across five villages in Tanzania.



2 ventures supported by King's Entrepreneurship Institute

**Uwana Energy:** This start-up, supported by programmes from the King's Entrepreneurship Institute, aims to improve access to stable electricity in Nigeria. Uwana serves energy-poor Nigerians who need an alternative to the unstable grid by offering customers solar energy that they can use now and pay for later, by connecting them to peer lenders around the world so they can repay in monthly instalments to fully own the system.

"I heard about solar years ago but thought it would be too expensive. Uwana helped me break the cost down, and now I have finished my payments, I get free, constant light."

Franca, housekeeper in Iyana Oworo



## Operations

**Divestment target achieved:** Early in 2021, King's achieved its divestment from fossil fuels target two years ahead of schedule.

**Energy-efficient renovation and building:** The university's Environmental Sustainability Policy commits King's to managing construction, refurbishment and post-completion occupancy of our buildings to reduce environmental impact and enhance the wellbeing of building users. King's Sustainability Guidance for Capital Projects sets out core principles, requirements and guidelines for how sustainability should be considered as part of construction and refurbishment projects. In 2020-21, the university continued to work on energy-efficiency measures, including installing LED lights and replacing fixtures in parts of King's estate. In some halls, older radiators have been replaced with more efficient ones, which have the ability to recognise when windows and doors are opened. Energy savings are expected to reach 30%. Several of the university's construction and refurbishment projects achieved BREEAM or SKA accreditations and King's was awarded funding from the Public Sector Decarbonisation Scheme, which funds projects to reduce emissions from heating our buildings.

**Carbon Management Plan and 100% renewable energy pledge:** The Environmental Sustainability Policy is supported by King's Energy & Carbon Management Policy and Carbon Management Plan, which ensure that the university continues

to implement energy-efficiency measures and reduce emissions while developing our Climate & Sustainability Action Plan. The previous target of reducing scope 1 and 2 emissions by 43% from 2005-06 to 2020 was exceeded in 2019-20, with King's achieving a reduction of 53%. All directly purchased electricity has been 100% sourced from wind power since October 2017. Solar panels have been installed on some of King's estate and the university is now looking for ways to increase on-site renewable electricity generation. New emissions targets outlining the journey towards net zero carbon by 2025 were also established.

**Energy-efficient labs:** Savawatt devices fitted to equipment such as fridges and freezers in laboratories reduce energy consumption by 14%. With estimated annual energy savings of approximately £15,000 and a lifespan of more than 10 years, Savawatt devices are expected to result in significant energy savings. This initiative supports King's participation in LEAF, allows users to estimate the impact of actions and aims to help laboratories bring down costs, reduce the impact on the environment and inform users in the process.

All electricity purchased by King's comes from 100% UK wind energy backed by Renewable Energy Guarantees of Origin certificates



474,007GJ energy used per annum, including 135,038GJ from low-carbon sources



# SDG8: DECENT WORK AND ECONOMIC GROWTH

**Promote sustained, inclusive and sustainable economic growth, full and productive employment and decent work for all**

## Research

**Work/Place London:** The Work/Place: London returning project, jointly led by King's Policy Institute and Business School, is bringing together London-based employers and policy stakeholders to understand how COVID-19 has altered the way Londoners now work and what the future of employment in the city will look like. Through a co-productive approach, the project is identifying lessons not just for London but for other international cities and the rest of the UK too.

**Helping develop more responsive forecasting models for the Bank of England and European Central Bank:** Economic forecasting models help central bank policymakers to make decisions and measure whether their policies have had the effect they intended. Professor George Kapetanios has been working with analysts at the Bank of England and the European Central Bank to produce new methods to deal with the problems of 'time variation' in economic data, improving the banks' analytical capability and leading to more robust policy decisions.



**Contributing to the fight against modern slavery and child labour:** King's researchers have historically contributed to knowledge and policies on modern slavery around the globe. Professor Satvinder Juss' work on a victim-centred approach to modern slavery laid the foundations for the Modern Slavery Act 2015. Professor Philippa Webb and Dr Rosana Garciandia worked on a British Academy-funded project aimed at identifying states' responsibility for modern slavery, producing a series of legal policy recommendations, which they launched at the United Nations headquarters in New York. Professor Prabha Kotiswaran has been writing

about anti-trafficking law and policy in the UK and India for more than 15 years, and in 2017 she brought together global experts to review the Transnational Legal Order on trafficking. She has also been a member of the advisory board of the International Labour Organization's Work in Freedom programme since 2013. In 2021, Dr Sian Oram launched a new project aimed at establishing what success looks like for survivors of modern slavery who access support services.

"There is no agreement about which outcomes are the most important for the recovery of people who went through modern slavery. The Modern Slavery Core Outcome Set will provide a standard that all interventions should be measured against, supporting improvements to survivor care."

Dr Sian Oram, King's Institute of Psychiatry, Psychology and Neuroscience

## Education

**Study programmes:** King's Dickson Poon School of Law, King's Business School and King's Department of International Development represent major hubs of expertise, providing King's students with insights on a range of topics related to decent work and economic growth, including work regulation, business sustainability and economic development:

**Economics & Policy:** The postgraduate programme offers strong disciplinary training in economics and provides students with an opportunity to apply key methodological tools in the analysis of economic policymaking. It aspires to train professional economists who will embark on careers in both private and government sectors as well as international organisations that are responsible for designing and implementing economic policy.

**Advanced Topics in Development Economics:** The advanced course provides a thorough exposition of the latest research in development economics. Teaching covers issues such as the role of trade and institutions in industrialisation and long-run development as well as cutting-edge empirical research on various topics such as human capital, conflict, corruption, foreign aid, gender and the environment.

**Employment Law:** The module gives students a sound knowledge of the principles of individual employment law, including an understanding of the growing influence of both human rights and European Union law on domestic employment.

**Corporate Social Responsibility:** This module provides students with a theoretical and practical understanding of the relationship between business and society through the umbrella concept of corporate social responsibility. The module analyses different perspectives to understand and apply corporate social responsibility in practice.



RESEARCH METRICS

2.8%  
of the publications in the UK

8,848 publications

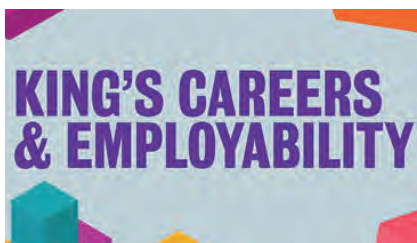
61% of the papers relating to SDG8 were internationally co-authored (151 papers)

4,768 citations

311 policies citing King's research

1,062 mentions of King's research in the media

**King's Careers & Employability:** The unit helps King's students and recent graduates building success in their career and employability journey – wherever they may be along that path and wherever they may be located. King's Careers & Employability provides a range of services and opportunities through the university's dedicated platform, King's CareerConnect, including:



**King's internships and global placements:** The teams help students to unlock meaningful work opportunities and navigate the variety of options, together with bespoke programmes exclusively for King's students, working with partners in the UK and internationally.

"I have learnt to let go of my doubts. When talking to my bosses and telling them how I was scared initially, I've really found my voice. I've learnt so much about the financial industry, especially as I had no real prior knowledge. Not only have my interpersonal skills improved but also my hard skills in programs such as Excel, SAS, Python, Power BI and Merit."

**William, student on placement at Lloyds Banking Group**

**Careers & Employability online education and King's Careers Blog:** King's provides innovative careers education, information and resources to support students and graduates in their personal and professional development. The Careers & Employability webpage hosts a variety of resources that cover all stages of students' career journey. The unit hosts hundreds of careers events every year, both physically and online, to help students discover different sectors and job roles, develop their awareness of different labour markets and geographies and action their applications.

**348** teaching units relating to SDG8

74 directly and 274 indirectly

**20,006** student engagements with units relating to SDG8

36.2% of total student engagement

## EDUCATION METRICS

**5,868** students undertook work placements of more than one month  
17.6% of the student body

**7th** in the UK for graduate employability  
Times Higher Education's Global Employability University Ranking 2021

## Service and engagement

**King's partnership with the Productivity Institute:** King's is one of the partner institutions of the £32 million Productivity Institute, headquartered at the Alliance Business School at the University of Manchester. The Institute brings together world-leading experts from a range of disciplines and backgrounds and works directly with policymakers and businesses to better understand, measure and enable improvements in productivity across the UK. It aims to directly inform government policy to improve UK productivity.

"Improving productivity is central to driving forward our long-term economic recovery and ensuring that we level up wages and living standards across every part of the UK. The new Productivity Institute and innovative research will bring together the very best of our researchers, boosting our understanding of the different drivers of productivity and helping people and businesses earn more in every area of our economy."

**Amanda Solloway, Former Minister for Science**

**King's Business School Consultancy:** King's Business School Consultancy offers up to 15 enterprises in King's local boroughs the opportunity to receive business consultancy from students, free of charge. Students can offer support on a range of business topics, including HR planning, marketing and social media, financial analysis, strategy and business planning, data analysis and organisational behaviour. Latest assessments show that 100% of clients would recommend King's Consultancy to other small businesses and would be interested in working with the King's Consultancy Project again.



**Electronics Watch:** King's is a member of Electronics Watch, a network providing independent monitoring for public procurement and helping public sector organisations work together to protect the rights of workers in their electronics supply chains.

**Economic impact of research and knowledge exchange activities:** The total economic impact of King's research and knowledge exchange activities was estimated at £2,281 million, which included a net direct research impact of £103.3 million as well as a resulting productivity spill over accrued by other organisations across the UK of £1,735 million and a total impact of £443 million generated by King's knowledge exchange activities. Compared to the £276 million of research income received by King's in 2020-21, this implies that, for each £1 million of its research income, King's research and knowledge exchange activities generated an estimated total of £8.3 million in economic impact across the UK.

## Operations

**Employment policies:** As part of the university's commitment to fair employment, King's has established policies and procedures for when the standards of conduct expected by the university are not met, including the Academic Staff Disciplinary Regulation Policy, Academic Staff Capability Regulation and the Interim Capability and Disciplinary Procedures. King's has a zero-tolerance approach to modern slavery and is committed to acting ethically and with integrity in all its business dealings. This commitment is reflected in the university's Modern Slavery & Human Trafficking Policy and the Modern Slavery Act Transparency Statement that is published every year. The same standards are expected from all the university's contractors, suppliers and other business partners.



**Living Wage Employer:** King's first committed to pay its staff members the London Living Wage in March 2014 but is now accredited by the Living Wage Foundation as a Living Wage Employer. This means that all directly employed staff and service contractors are paid a wage based on actual living costs for London, rather than the government-determined National Living Wage.

"The real living wage enables employees to earn a fair day's pay for a hard day's work – enough to live and not just survive. By accrediting as a Living Wage Employer, King's is showing leadership, acting out its commitment to service and making a real difference to the lives of its staff."

**James Blatchley-Asfa, Lead Organiser, South London Citizens**

**Recognition of unions:** King's recognises several unions for both academic and professional staff members: UCU, Unison and Unite.



**90%** of staff have contracts of more than 24 months

**22** ventures supported by King's Entrepreneurship Institute



# SDG9: INDUSTRY, INNOVATION AND INFRASTRUCTURE

**Build resilient infrastructure, promote inclusive and sustainable industrialisation and foster innovation**

**215**  
publications

**60%**  
of the papers relating to SDG9 were internationally co-authored (130 papers)

**47** mentions of King's research in the media

**263** policies citing King's research

## RESEARCH METRICS

**1.6%** of the publications in the UK

**1,650** citations

**£187,825,000** in research income  
 £128,117,000 in Medicine,  
 £34,171,000 in STEM, £25,537,000 in Humanities

## Research

**Industry Research Partnerships:** Industry Partnerships is the university's dedicated service for fostering research collaborations with the private sector. The unit provides support across scales and disciplines. Industry Partnerships is the go-to service for both internal staff and external companies keen on collaborating and utilising academic research to solve real-life problems.

**Manufacturing, Materials & Systems:** Hosted by King's Department of Engineering, the research group takes an integrated approach to global challenges, using systems engineering to ensure the innovation and solutions developed are sustainable, optimise and adaptable. The group has developed an expertise in advanced materials with researchers optimising and developing functional and structural materials from energy storage, healthcare, lightweight transport and novel sensors while seeking to reduce environmental impact. Alongside developing new materials, they work to understand and optimise existing materials to improve performance and service life.

**Institute for Industrial Strategy:** Considered unique in the sector, the Institute is being created in response to the emerging national industrial strategy. It aims to help shape this critical area of domestic policy



providing critical-thinking and expertise on a range of key topics, including productivity, supply chains, digital transformation and skills development. The Institute directly addresses the question of how the UK will develop the skills base, infrastructure and innovation that will match the demands of an increasingly competitive global marketplace.

**King's Together Seed Fund:** This university-wide research-focused seed-funding scheme is an internal competition offering £1,000,000 per annum to support the development of interdisciplinary research and innovation projects that will lead to external research grant applications and that are strategic in nature.

**AI Centre:** The AI Centre trains algorithms to create AI powered tools for faster diagnosis, personalised therapies and effective screening. To improve its resource allocation, the AI Centre recently installed Run:AI, the world's first orchestration and virtualisation platform for AI infrastructure, and has since doubled its graphics processing unit (GPU) utilisation. The Run:AI platform has helped the AI Centre to run important research into the progression of neurological conditions and interventions for cancer patients. It also allowed teams to quickly pivot research activities towards COVID-19, where time to results is critical.

"With Run:AI, we've seen great improvements in the speed of experimentation and GPU hardware utilisation. Reducing time to results ensures we can ask and answer more critical questions about people's health and lives."

Dr M Jorge Cardoso, Reader in Imaging Sciences

## Education

### Study programmes:

**Strategic Entrepreneurship & Innovation:** This course provides students with the tools and techniques to understand and manage entrepreneurial ventures and lead innovative teams and organisations around the world. Students have the opportunity to explore the key issues of innovative entrepreneurship,



from how companies identify and exploit both market and technological opportunities to how they grow and secure finance.

**STEM Education:** The postgraduate programme is designed to provide students with an advanced and comprehensive understanding of key contemporary debates concerning STEM-related education, including policy, curriculum, pedagogy and assessment issues alongside global concerns about equity, social justice, economic growth, climate change and sustainability.

**Industrial Organisation:** This module, taught as part of the King's Business School undergraduate curriculum, critically examines a range of approaches within the field of industrial organisation. Fundamental theoretical questions are addressed, and the module introduces various modern economic perspectives.

**Engineering with Management:** The course aims to equip students with practical and theoretical knowledge of modern engineering, alongside a grounding in management techniques and their application to the field of engineering.



**King's Entrepreneurship Institute:** The Entrepreneurship Institute supports and nurtures the most innovative and resilient entrepreneurial minds from the King's community, providing them with the skills they need to help imagine and design a better future. Sustainability is fully integrated into how the Institute develops entrepreneurial skills and provides support to start-ups.

"[We] wouldn't have been able to get this far without the culture of nurture at the Entrepreneurship Institute. It's one thing to teach people how to scale, which is common among other accelerators, but here the focus on resilience, peer-to-peer support and guidance both personally and professionally has been immense."  
**Dr Bhavagaya Bakshi, Co-Founder, C the Signs**

**Idea Factory:** The idea generation competition aims to foster the biggest and best ideas from across the university that have the potential to grow into ventures, taking participants through a process from light-bulb moment to viable business proposition. Prizes include funding from a £6,000 prize pot, mentoring and a range of support services.

**King's20 Accelerator:** This is a flagship 12-month start-up programme supporting the 20 brightest and highest potential ventures from King's to reach their potential each year. The programme is open to all King's students, staff and alumni. In 2020-21, the cohort generated £180,000 in revenue, £750,000 in investment and £500,000 in allocated grants and led to the creation of 28 jobs.

**TEDI London:** TEDI's Global Design Engineering programmes offer a unique approach to engineering education, allowing students to develop creativity, problem-solving, communication, business and team-working skills to design solutions to global challenges set by industry. Students work with tutors and industry mentors while learning theory through virtual learning. TEDI London was collaboratively launched with Arizona State University and UNSW Sydney.



## EDUCATION METRICS

**423** teaching units relating to SDG9  
 86 directly and 337 indirectly

**23,290** student engagements with units relating to SDG9  
 42.1% of total student engagement

## Service and engagement



**London Venture Crawl:** Set up by King's Entrepreneurship Institute in 2017 with one bus, London Venture Crawl has since grown to an annual event with 16 universities, 10 buses and 400 students participating in 2020, and parallel events taking place in Birmingham, Manchester, Chicago and Melbourne. The journey takes students to some of London's top innovation hubs and workspaces to experience London's start-up ecosystem first-hand and meet top entrepreneurial leaders.

**Equity investment in King's ventures:** King's has continued to see an exciting performance of ventures and assets linked to the university's research. An independent evaluation from Beauhurst shows that King's (when measured by equity volume) was ranked fourth in the UK and first in London, with £245 million invested in 2021. Equity investment is also a useful proxy for jobs created, thereby indicating the significance of King's impact on the local economic sustainability. VitroLabs Inc, a biotech company leading the development of a new scientific process to grow the world's first cellular cultivated animal leather, raised a total of \$46 million to build and scale pilot production. Pheon Tx Ltd (anti-cancer therapy) completed an oversubscribed series A investment of more than \$68 million. Both Quell Therapeutics (regulatory T cells for transplant and autoimmunity) and AviadoBio Ltd (advance neurodegenerative gene therapy, formerly Neurogeneus Ltd) featured in the top 11 UK equity raises of 2021, raising \$156 million and \$80 million, respectively, in financing. Zoe Global Ltd (personal health, with emphasis on nutrition and the microbiome) has raised \$47 million in funding, the latest of which was in 2021.



## Promoting science through outreach programmes:

King's aims to foster interest in STEM in both the general public and school-age students. Faculties run a series of free lectures and activities, including access labs, summer schools, maths clubs and trainings for A-level students. King's Maths School provides mathematics education to young students who have a fascination for mathematics. Internationally, the Department of Physics provide physics training and education to countries that, for a multitude of reasons, are lacking resources and manpower to conduct high-level science research. Programmes includes The African School of Fundamental Physics and Applications and Particle Physics in Palestine.



**49** ventures supported by King's Entrepreneurship Institute

**19** university spin-offs

**King's Digital Lab:** The initiative gathers digital researchers, engineers and data experts to develop research tools and processes that can handle the most common challenges of digital research in the humanities and social sciences. The group offers tailored resources, services and solutions aiming to push the boundaries of computationally intensive research, including consultancy and development of technical solutions to the higher education sector.

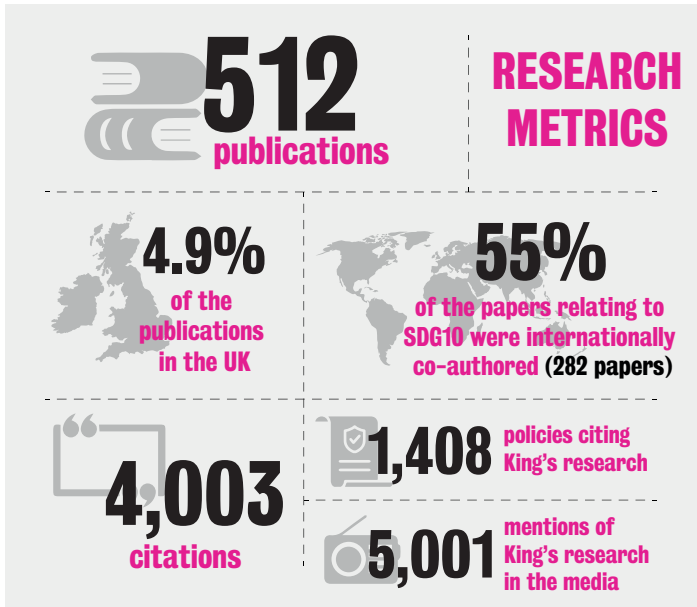
## Operations

**Eduoram:** The network is available for King's staff, students and researchers, providing free Wi-Fi access to King's community on campuses.



# SDG10: REDUCED INEQUALITIES

## Reduce inequality within and among countries



### Research

**Health Inequalities Research Network (HERON):** HERON is an international public engagement network funded by the Wellcome Trust. It brings together people from local communities, charities, public health researchers and health practitioners with a collaborative approach to action-research in the community. HERON supports a number of projects that investigate health inequalities, including the South East London Community Health Study, the Tackling Inequalities and Discrimination Experiences in Health Services Study and the improving the Health of Young People Project.



**Informing policies on inequalities:** Researchers from the Policy Institute have supported policymaking by informing recent debates and providing critical knowledge around inequalities in the UK and globally. Researchers worked with Ipsos MORI to look at what the British public thinks are the most serious forms of inequality in comparison to 28 other countries. In collaboration with the Institute for Fiscal Studies Deaton Review of Inequalities, researchers also explored whether the public mood in the UK had shifted in favour of a more interventionist state as a result of the COVID-19 pandemic, finding that the crisis has, for the most part, not bridged political divides on the matter.

"The coronavirus crisis has not unified Britain on the need for radical action on inequality – instead, we remain very divided. But the one very clear exception is the need to prioritise inequalities between deprived and better-off areas. This is a top concern and crucially, not just the view from those directly affected: all groups prioritise geographical inequality."

Professor Bobby Duffy, Director of the Policy Institute

**Migration Research Group (MRG):** The interdisciplinary group gathers staff and students with an interest in the study of migration. Set up in the wake of the misnamed 'European refugee crisis', the MRG seeks to develop a better understanding of, and change the often-negative narrative surrounding, migration in Europe and beyond. The group's projects include collaborative research (such as the student-led Humans of Calais project) and the development of policy advice (such as the Legal Pathways to Protection project).



**Queer@King's:** Originally set up to organise the Queer Matters international conference, Queer@King's is an inter-departmental and interdisciplinary group of researchers committed to being an inclusive, non-hierarchical, multi-vocal collective that provides a supportive and stimulating environment for queerwork within and beyond the university.



### Education

**Decolonising the Curriculum and Inclusive Pedagogy:** King's Decolonising Working Group brings students and academics together to work towards decolonising the curriculum and pedagogy at King's and beyond. The group supports a number of events and projects, including the exhibition on Lotus – the magazine of the Afro-Asian Writers' Association – and a pedagogical toolkit on how Lotus can further the work in the classroom.

**Study programmes:** King's has developed expertise in a range of disciplines, which allows the university to explore the multi-dimensions of inequalities and provide students with a broad and well-rounded understanding of the concept while allowing them to gain the knowledge and skills they need to help tackle the many global challenges linked to inequalities.

**Migration, Social Justice & Community Organising:** The master's level module was launched in collaboration with Citizens UK, allowing students to study migration theory while learning practical skills to tackle social issues. Campaigns were developed on immigration status, hate crime and mental health provision. As part of the module, one group of students ran a campaign to establish a more efficient and consistent reporting process for hate crime and brought these issues before the mayoral candidates at the London Citizens Mayoral Assembly in 2021.

**Race, Cinema and American Culture:** This module examines the history of American cinema through study of how the cinematic treatment of race has shaped and been shaped by the film industry and its institutions,

genres and practices with the aim of encouraging students to develop a critical look at the relation between cultural representation and social inequalities.

**Managing Diversity & Inclusion:** This module introduces students to theories and practices involved in the management of diversity and inclusion and aims to equip students with the knowledge and skills to build and sustain diverse and inclusive workplaces.

## EDUCATION METRICS

**358** teaching units relating to SDG10  
111 directly and 247 indirectly

**19,453** student engagements with units relating to SDG10  
35.2% of total student engagement



## Service and engagement

**Widening participation:** King's recognises that opportunities, aspirations and chances to succeed are not distributed fairly across society. King's has developed an Access and Participation Plan that presents the range of strategic measures and activity the university has put in place to improve equality of opportunity for underrepresented groups and address gaps in access, student success and progression. King's latest plan also sets out clear targets for 2024-25 and establishes the university's mission to lead the UK Russell Group in terms of social mobility and widening participation.

**Amos Bursary and Aspire:** King's is dedicated to improving access for Black and Afro-Caribbean students. The university works closely with Amos Bursary to host 120 of its bursary recipients and associates, as well as providing two bursaries at King's. Co-created with the King's African and Caribbean society, Aspire is King's post-16 scheme for Black students. It aims to boost their confidence and knowledge through a range of mentoring, academic and careers-based activities.



**Parent Power and Empoderando Familias:** In collaboration with South London Citizens, King's provided community organising training to parents of learners in years 7 to 9. Parents have used community-organising tools and techniques to campaign on issues of educational equality and have secured funded open day visits to Oxford, Cambridge and the University of Leicester as well as a number of subsidised places in private summer schools. This work has been covered by the BBC and won *The Guardian's* social and community impact award. After three years, King's and Citizens UK launched Empoderando Familias in response to the concern that Latin American parents were underrepresented in the Parent Power programme despite the large local community.

"Parent Power is fantastic. It is empowering us to help our children and building such a fantastic relationship with King's. We are not alone in this fight for education and now I know that King's is only a text away."

Betty, Parent Power leader



**King's Sanctuary Programme:** The programme aims to initiate and lead on projects that create positive opportunities for people whose education and/or research has been disrupted due to being displaced.

**King's Refugee Sponsorship Scheme:** King's worked in partnership with Citizens UK, the Home Office and the UN Refugee Agency to be the first university to be accredited as a Community Sponsor through the UK Refugee Community Sponsorship Scheme. This scheme enables community organisations to support refugees in settling into their local area. King's helped resettle a refugee student and their family who had been displaced from Syria to Lebanon in December 2021.



**Sanctuary Scholarships:** King's provides scholarships for undergraduates who are asylum seekers or have been granted limited leave to remain and have no access to student finance. To date, King's has offered 28 scholarships to students who would otherwise not have been able to access higher education. In 2021, the Dr Monica Malik Refugee Bursary was also established to support one postgraduate student per year from a refugee or humanitarian protection background.

**Staff and student networks and mentoring programme:** The EDI Team facilitates and supports several staff networks and mentoring programmes. The B-Mentor Scheme is a cross-institutional mentoring scheme for BAME staff. ACCESS King's is the staff disability inclusion network, which aims to bring positive change and improve opportunities for people with disabilities and/or long-term and/or restrictive health conditions. PROUDLY King's is the university's staff LGBTQ+ network. It received a Highly Commended Award as part of Stonewall's Bring Yourself to Work campaign and has recently launched its podcast, Proudly Pod, which is publicly available on Spotify, to discuss vital issues in LGBTQ+ culture.

**22** ventures supported by King's Entrepreneurship Institute

## Operations

**University governance on equality and discrimination:** King's aims to address structural inequalities to ensure that everyone, no matter their background, has an equal opportunity of success as part of King's community. Employment at King's is guided by an overarching Equality, Diversity & Inclusion (EDI) Policy and an EDI Action Plan supports its implementation. The university also builds on a set of complementary policies, including a Bullying and Harassment Policy, an Information Disclosure (Whistleblowing) Policy, a Disability Policy, a Menopause & Menstruation Policy and a Trans Equality Statement and Procedures. Each year, King's EDI team also publishes an annual report outlining current activity related to the Public Sector Equality Duty and, where gaps exist, show how the university aims to address them.

**Pay Gap reporting:** In 2021, the university's mean gender pay gap dropped 2.3 percentage points from 17.1% to 14.8%, while the median gender pay gap has fallen into single figures for the first time, down from 10.1% to 9.6%. Since 2018, the university also voluntarily calculates and communicates on ethnicity pay gap figures assuming the same methodology as for gender pay reporting. The ethnicity pay gap has fallen slightly to 19.1% (mean) and 12.7% (median). This is an improvement, but the gender and ethnicity pay gaps at King's remain a scar on our commitment to equality, diversity and inclusion and we know that we need to do more to address the inequalities this gap signals.

**Fair and contextualised admissions:** King's is committed to the recruitment of students with the greatest academic ability and potential, irrespective of their social, cultural and economic background. The university thus ensures fair, transparent and consistent admissions practices. A new Fair Admissions Policy was implemented to cover admission to all accredited study programmes. King's also extends contextual offers to applicants, such as forced migrants and refugees, who may have experienced barriers to academic progress.

**Multi-faith chaplaincy:** King's Chaplaincy sees positive multi-faith relations as a necessity and seeks to promote mutual understanding and respect between people of different faiths and beliefs. This is reflected in King's Religion & Belief Policy and Guidance. King's Chaplaincy also provides access to various prayer and reflection rooms for all faiths across campuses.

**Race Equality Charter Bronze Award**

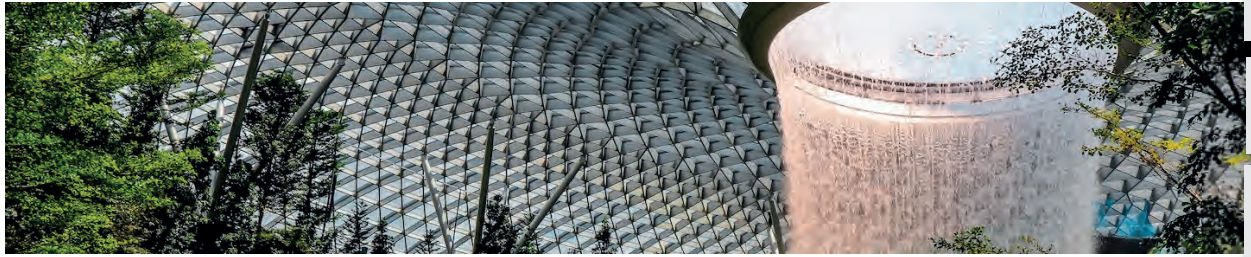
**14th** in the Stonewall Top 100 Employer list

**25.2%** of students are the first in their immediate family to gain a degree

**6.6%** of employees and **13.1%** of students disclosed that they are disabled

**1,982** students are from low or lower-middle income countries (5.9% of the student body)

**21.4%** of academic staff **23.2%** of PS staff and **68.8%** of students stated they are Black, Asian or Minority Ethnic



# SDG11: SUSTAINABLE CITIES AND COMMUNITIES

**Make cities and human settlements inclusive, safe, resilient and sustainable**

## Research

**Urban Futures Research Group:** The group explores what cities are and how they work. The group notably examines how visions of urban futures in planning, governance, citizenship and everyday life are being imagined, contested and lived in by people across the world. Researchers from the group use this approach to address some of the most important challenges facing cities today in both the Global North and the Global South, including issues of security, liveability, health and inequality.

**Urban Living Hub:** The Urban Living Hub acts as an umbrella of activity for all research in the Department of Informatics addressing urban-related issues. The group builds upon strong connections with partners from complementary sectors to develop research collaborations that notably address London's most pressing urban challenges.



**Urbanisation, Rural Development and Social Transformations Research Group:** This research group aims to bring together those working on urbanisation, rural development and social transformations across Asia, Africa and Latin America, with a view to developing future networks, grant proposals and long-term collaborative projects aiming at informing rural-urban transition in the Global South.

**How COVID-19 is impacting London:** The London Intelligence, in association with King's Policy Institute and the Centre for Urban Science and Progress, showed how London has been affected by COVID-19 in term of cases and deaths, as well as the impact on business activity, labour market and behaviour. The research showed that although London saw a substantial drop in business activity, the capital's job market seems to have been relatively resilient.

"London was hit hard by the pandemic. This report gives a snapshot of how city life has been affected to date – from employment, to shopping, to air quality. As we start to look to what lies beyond lockdown, and life begins to return to streets, workplaces, shops and restaurants, we will continue to track progress against this baseline."

**Richard Brown, Deputy Director, Centre for London**

## RESEARCH METRICS

**260** publications

**2.5%** of the publications in the UK

**63%** of the papers relating to SDG11 were internationally co-authored (165 papers)

**3,002** citations

**404** policies citing King's research

**1,502** mentions of King's research in the media



**Mapping Digital Cultural Heritage in Jordan:** The MaDiH project supports Jordanian cultural heritage specialists in their work to build digital infrastructure aligned to local, national and international frameworks, thus contributing to the long-term sustainable development of Jordan's digital cultural heritage.



## Education

### Study programmes:

**Sustainable Cities:** This master's degree focuses on the way urban knowledge can help produce more socially and environmentally sustainable cities. Students examine a variety of views on cities internationally while being taught in London, which acts as a real laboratory. Many of King's Sustainable Cities graduates have gone on to work in sustainability consultancy organisations, local authorities around the world, NGOs focused on urban issues and private-sector urban development companies.

**Risk Analysis, Disasters and Resilience:** The master's programme provides students with an advanced and interdisciplinary foundation in the study of environmental, technological and social risk and disaster. The programme brings together a range of perspectives on the underlying causes of disasters, giving students expertise on governing, managing and communicating risks across a wide range of societal, public and private-sector contexts.

"The MSc in Risk Analysis allowed me to develop a robust understanding of key risk concepts and methodologies used in contemporary policy analysis and design. I was able to apply those skills as part of my internship at one of the UK's leading learned societies – the Royal Society – where I ultimately took up a permanent role."

**Ben, former MSc Risk Analysis, Disasters and Resilience student**

**Urban Ecology:** The module focuses both on (1) urbanisation, urban form and structure, urban biodiversity and conservation, and; (2) urban hydrology, urban rivers, urban river restoration and both terrestrial and aquatic pollution. As part of the teaching structure, students are given the opportunity to visit urban river sites in London, which contributes to the development of their knowledge and understanding of urban ecology and ecosystems.

**London as a living classroom:** King's education strategy integrates London into the learning experience, making the city a living classroom for students. Partnerships with local boroughs and organisations across the capital are a distinctive feature of King's education. These collaborations help students take away the best possible life opportunities and develop lifelong connections and networks that will support them throughout their careers. At the same time, the students offer partners across the capital new insights and perspectives on their challenges and opportunities.

**King's Experience Cultural Award:** This co-curricular programme offers experiential and creative learning outside of students' formal studies. King's Experience Cultural Award is a 10-week course that allows students to explore and map their own cultural London – from pub gigs to palaces, tattoo parlours to Tate Modern, street art to the Southbank Centre – in a fun, sociable and supported way.



## Service and engagement

**King's connected venues and cultural events:** Spread over five campuses, the university is connected to a wide variety of different cultural spaces. King's Culture team includes sector specialists with expertise in collaborative education, research and innovation, public programming, partnerships, cultural engagement and cultural policy. They are responsible for regular events and programmes that support the needs of faculties and students each year.

**People and the Pandemic:** Some of King's campuses and hospitals were transformed into vaccination sites during the COVID-19 pandemic. People and the Pandemic is a collection of texts, quotations and podcasts highlighting the human stories behind King's response to the pandemic and emphasising the many facets and interdisciplinary nature of pandemic problem-solving in a dynamic and emerging situation. An outdoor installation in vaccination sites aimed to enhance people's experience and provide an insight into the university's work.



**King's Choir:** King's Choir is one of the leading university choirs in the UK, with 30 Choral Scholars reading a variety of subjects. The Choir provides music for Chapel worship, with weekly Eucharist and Evensong services

## EDUCATION METRICS

**243** teaching units relating to SDG11  
47 directly and 196 indirectly

offered during term, as well as various other services. Services from the College Chapel are regularly broadcast on BBC Radio. The Choir also frequently sings for worship outside the university, including at Westminster Abbey and St Paul's Cathedral.



**Growing Up During Neighbourhood Change:** PhD student Hana Riazuddin, along with a team of eight young researchers from South London, curated a research project that uses photography, maps and zines to delve into the effects of urban regeneration on mental health. The project was launched in a gallery exhibition at 198 Contemporary Arts and Learning, a historic gallery for local and international Black artists in Brixton.

**Urban Africa Risk Knowledge (ARK) project:** The King's-led research and capacity-building programme aimed to reduce disaster risk in urban sub-Saharan Africa by setting a new research and policy agenda aimed at breaking cycles of risk accumulation. Focus was on those at risk, especially in low-income and often informal or illegal settlements, but also on large-scale planned urbanisation projects and how these reshape the social and environmental geographies of cities and consequent risk profiles. The programme continues to have significant policy impact even after the completion of the research, with three recent policy documents from Oyo State/Ibadan City (Nigeria) making specific reference to Urban ARK.

**King's x Somerset House Studios:** King's x Somerset House Studios is a research & development scheme that facilitates and supports new collaborations between King's researchers and the Studios' resident artists, designers and thinkers. The programme offers seed-funding to potential artist-researcher teams to test ideas and explore critical new perspectives on contemporary culture and society. Each year, up to six collaborative projects are selected for funding after a series of networking and curated presentation events hosted by King's and Somerset House Studios. The funded collaborations culminate in a showcase to arts industry representatives and academics.

**Undisciplined Spaces:** Undisciplined Spaces is providing a pioneering opportunity for 12 first- and second-year undergraduate students from across King's College London to design and deliver, virtually and in collaboration with local community researchers, creative activist research projects addressing issues of

**13,091** student engagements with units relating to SDG11



**23.7%** of total student engagement

**30** ventures supported by King's Entrepreneurship Institute

spent on arts and heritage in 2020-21 **£18,905,800**



## Operations

**Strand pedestrianisation:** King's has been collaborating with Westminster City Council and local stakeholders to pedestrianise the Strand/Aldwych, which used to be a busy road running through our campus. The group worked together over three years to develop this new vision for a traffic-free Strand. This will create a new public space that, instead of cars and couriers, puts people first and will be filled with trees, lawns and meeting spots.

**Promoting sustainable travel:** King's recognises the impacts that travel of students and staff has on the environment. The university has two travel policies, one focused on international travel and the other on inter-campus travel. The university moved closer towards the electrification of its vehicles with the installation of charging points, which started in 2020-21. King's cycle-to-work scheme offers substantial savings on the cost of a bicycle, safety equipment and accessories for staff members. Together with Better Bankside, King's also took part in the Smart Mobility Challenge, where participants worked with tech companies to make freight journeys around London smarter and greener, with the winner of the challenge being tasked with implementing their solution in 2021-22.

**Student accommodation and King's Affordable Accommodation Scheme:** King's Residences provides accommodation to more than 6,000 students each year. The university rent-setting policy guides the rent-setting process and provides transparency in how rents are set each year. The university also established the King's Affordable Accommodation Scheme, which is a rent model discussed with student representatives to ensure King's maximises the number of rooms that are priced at the lowest possible rates, so that students from more challenging financial backgrounds can still access accommodation.



# SDG12: RESPONSIBLE CONSUMPTION AND PRODUCTION

## Ensure sustainable consumption and production patterns

### Research

**Design guidance and considerations for packaging design towards a Circular Economy:** Packaging design is estimated to affect up to 80% of environmental sustainability impacts. Researchers aim to investigate the guidance and considerations that comes along the packaging design process aiming to encourage Circular Economy-oriented packaging design solutions.

**Process design, simulation and sustainability evaluation of biodiesel production:** Biodiesel has been considered one of the most adaptable alternatives to fossil-derived diesel. This study considers state-of-the-art research in biodiesel production, including process design and simulation, sustainability evaluation, optimisation and supply chain management, while highlighting the challenges and opportunities

for the development of potentially sustainable and eco-friendly biodiesel technology.

**Toxic waste dumping in the Global South as a form of environmental racism: evidence from the Gulf of Guinea:** Countries in the Gulf of Guinea continue to be targeted by waste-brokers exporting toxic and electronic waste from developed countries. Inadequate care of the heavy metal and toxin content undermines the health of the local populations and their environment. This paper argues that toxic waste dumping in the Gulf of Guinea amounts to environmental racism. It makes a series of recommendations on the need for countries to implement the provisions of the Basel and Bamako conventions, recognise acts of environmental racism as violations of human rights and encourage young people to rise to the occasion as 'agents of change'.



**Mapping the Food Waste-Energy-Water-Emissions (FEWE):** King's (along with ASU, Dublin City University and City University of Hong Kong) obtained a grant from the Global Consortium for Sustainability Outcomes for a proposal to measure the impact of commercial kitchens on the climate through the lens of the FEWE Nexus. The research builds on the case study of King's Kitchen, looking at the impact of activity and meal production from field to fork to create a Certification for Sustainable Kitchens.

**92** publications

**1.4%** of the publications in the UK

**66** policies citing King's research

### RESEARCH METRICS

**56%** of the papers relating to SDG12 were internationally co-authored (61 papers)

**950** citations

**148** mentions of King's research in the media



### Education

#### Study programmes:

**Multinational Corporations and Global Supply Chains:** This module explores the ever-changing role of multinational corporations and their supply chains in the global economy, thus providing students with a well-rounded understanding of the global supply chain organisation of multinational companies and equipping them with the necessary knowledge to act as changemakers in the sector.

**Sustainability and Ethics:** In this module, students are encouraged to think about the role of marketers and consumers in contributing to sustainability. Key concepts include corporate social responsibility, ethics and sustainability, which are explored in relation to consumer behaviour, product strategies, marketing communications, supply chain management and internationalisation.

## EDUCATION METRICS

**226** teaching units relating to SDG12  
38 directly and 188 indirectly

**13,030** student engagements with units relating to SDG12  
23.7% of total student engagement

## Service and engagement

**Fairtrade Fortnight:** The Fairtrade process aims to ensure people get paid a fair price for what they sell and that they have safe working conditions. Each year, King's takes part in Fairtrade Fortnight, a two-week event for campaigners, businesses, schools and organisations to show their support for the farmers and workers who grow food in developing countries and raise awareness of the plight of farmers outside of the system.



**Grafting a Circular Economy:** Dr Lauren England and designer/maker Julian Leedham developed a series of workshops to explore new ways of making use of waste materials and developing biodegradable ones, from repairing, refurbishing, reusing and recycling products to developing service models. Their project aimed to build greater understanding of the work of creative individuals and organisations engaging with the circular economy.

**Don't Be Trashy:** King's #DontBeTrashy campaign aims to inspire students to reduce waste, avoid single-use plastics and improve recycling of unavoidable waste. As well as providing helpful guides to reducing waste, the #DontBeTrashy campaign includes piloting different behaviour change 'nudges'.



**Warp It:** Warp It is an online platform for university staff to reuse materials/goods throughout the university. Warp It saves a significant amount of money and reduces the amount of waste the university produces. All items are free to claim and a dedicated courier service was set up to make transferring items from campus to campus as easy and efficient as possible.



**Sojo:** Sojo is a platform for clothing alterations that connects users with local seamsters. It has already been downloaded thousands of

times and featured in publications including *British Vogue*. The business – winner of King's20 Accelerator 2020-21 – was coached by King's Entrepreneurship Institute to ensure the venture was successful. Sojo has secured further investment, won the Santander x Entrepreneurship Awards pitch competition and built partnerships with renowned retail companies.

"I was really horrified by how unethical the fast fashion industry was when it came to, predominantly female, garment workers. By creating an app that facilitates more second-hand shopping through making clothes altering easy, I hope to have a small impact in steering money away from companies that take advantage of women in developing countries and take advantage of our planet – hopefully contributing to forcing them into making a change."

Josephine Philips, Physics and Philosophy Student and Founder of Sojo

**19** ventures supported by King's Entrepreneurship Institute



## Operations

**Sustainable Food Policy and Fairtrade Action Plan:** The Sustainable Food Policy commits King's to addressing impacts arising from the university's catering and hospitality operations, while providing healthy and sustainable food for students, staff and visitors. This includes the removal of palm oil from food produced in-house, engaging with students and the local community to redistribute unsold food, removing beef from restaurant menus and serving vegan and vegetarian options as the default options at meetings and events. Co-signed with KCLSU, the Fairtrade Policy also ensures that the university buy and serve Fairtrade and promote the positive impacts of Fairtrade. The university was re-certified under the new scheme in 2020 and developed a Fairtrade Action Plan, which aligns our commitments with the SDGs.



**Socially Responsible Procurement Policy:** The policy ensures that King's not only buys third-party goods and services from sustainable sources but also does so in ways that are beneficial to society, especially focusing on King's local boroughs of Lambeth, Southwark and Westminster. King's is also a member of Social Enterprise UK, through which suitable opportunities to award contracts to social enterprises that reinvest their profits towards social and environmental sustainability initiatives are identified. King's also aims to increase the number of small to medium enterprises in its supply chain year on year and in doing so meets its objective to 'shape and transform the local and international communities with which the universities interacts'.

**1,065** tonnes of waste generated  
670 tonnes recycled (62%)  
11 tonnes reused (1%)  
0 tonnes sent to landfill

**Waste management:** King's approach to waste and recycling is governed by the Waste and Resources Management Policy, which was updated in 2020-21 to reflect the university's increased focus on minimising waste and embedding circular economy approaches. The policy sets out the university's commitment to managing waste (including hazardous and lab wastes) sustainably and to continually improve and innovate on how to do this. Waste and recycling targets, data and initiatives are reported publicly in an annual Environmental Sustainability Report.

**Ethical investment:** King's Ethical Investment Policy commits the university to not directly investing in gambling, tobacco and fossil fuels.



# SDG13: CLIMATE ACTION

## Take urgent action to combat climate change and its impacts

### Research

**King's Climate Hub:** King's Climate Hub recognises that climate change is a multi-faceted problem that requires integration of physical and social science. As a cross-disciplinary hub, the group has a particular interest in the relationship between science, policy and culture, particularly in the developing world. The hub has worked on a number of projects that directly contributed to fighting climate change and its consequences, raised awareness on specific problems and furthered the world's knowledge and expertise on climate-related issues.



**Net Zero Centre:** King's established this new interdisciplinary Centre of Excellence to nurture and facilitate discovery and applied research addressing the challenges for decarbonising our

society and reducing the environmental impact of the world's manufacturing, infrastructure and cities. The Centre also fosters the next generation of King's changemakers by educating scientists and engineers on the holistic context of these challenges and developing technologically aware social scientists, lawyers and policymakers.

**Centre for Climate Law and Governance:** The Centre was recently established to foster interdisciplinary research about legal and governance approaches to the disruptive challenges of climate change and sustainability in the Global North and South. The Centre builds on a diverse and inclusive team of academics and aims for high-impact knowledge exchange by engaging with organisations, governments, industry and NGOs around the world.



resilience, thus mobilising a response to the needs of policymakers.

**Centre for Integrated Research in Risk & Resilience:** The Centre for Integrated Research in Risk & Resilience is recognised as an International Centre of Excellence by the United Nations Office for Disaster Risk Reduction. Through projects such as Precarious Places and BRACED, the Centre brings together disciplines to shape a critical perspective on resilience. Researchers create new knowledge and push the boundaries on risk and



**King's Earth Observation and Wildfire Research Group:** The group's research encompasses many aspects of remote sensing and environmental modelling to understand, prevent and control the risks associated with wildfire. The group runs advanced laboratories that provide imagery and research to national governmental bodies and are made publicly accessible through the group's website.

### Education

#### Study programmes:

#### Environmental Science for Sustainability:

This master's programme focuses on the practical and technical skills that are widely used by the environmental science and sustainability sectors. The teaching covers the theoretical background to environmental science, environmental impact assessment and cost benefit analysis, as well as practical training in collection, analysis and interpretation of environmental data to evaluate environmental change.

#### Climate Change: Environment, Science and Policy:

This interdisciplinary master's programme examines the key issue of human influences on the Earth's climate and environment and their societal consequences. This programme offers a unique flexibility, allowing students to approach the topic of climate change from a policy or science pathway, meaning students can specialise

**177**  
publications

**60%**  
of the papers relating to  
SDG13 were internationally  
co-authored (106 papers)

#### RESEARCH METRICS

**1.7%**  
of the  
publications  
in the UK

**2,252**  
citations

**3,037** mentions of  
King's research  
in the media

**203** policies citing  
King's research



while choosing from a long list of interdisciplinary modules from either route, allowing them to become well-rounded experts in the field of climate change.

**Sustainability & Climate:** King's piloted a new online open-access and interdisciplinary module on Sustainability & Climate, which covers topics ranging from climate change and food waste to sustainable finance and social justice. All students and staff can gain a meaningful understanding of sustainability, the SDGs and how related issues are relevant to their degrees, work and career aspirations. The key aim of the module is not just to equip participants with sustainability knowledge but for them to develop the agency to take action on the issues that most concern them.



**Sustainability Champions Assistant:** The King's Sustainability Team is offering an opportunity for students to gain skills in project and people management, sustainable development, communications, events management and leadership by supporting the team to deliver the Staff Sustainability Champions programme, which is part of Green Impact initiative, a sustainability awards programme run by SOS-UK.

**King's sustainable student groups and societies:** Students can join a number of different societies and projects that directly relate to ethics, sustainability, the climate and its consequences, including KCL EcoSoc, Enactus KCL, MedsincKCL and KCL Climate Action Society.



## Service and engagement

**8** ventures supported by King's Entrepreneurship Institute

**600+** hours of student engagement around sustainability

**King's Sustainability Blog and podcasts:** King's Sustainability Blog is a key medium and platform used to keep King's community informed of what the university is up to regarding climate action and inspire everyone to actively participate in sustainability related initiatives. Several podcasts are also drawing attention to sustainability and climate-related issues. The new King's Spotlight on Sustainability aims to encourage people to think about those issues, highlighting some of the excellent work happening at King's. The 'WORLD: We Got This' podcast series is asking those researching and studying global challenges about the impacts they are having on society and what King's community can do to help overcome them. The King's Climate Hub's

## EDUCATION METRICS

**131** teaching units relating to SDG13  
34 directly and 97 indirectly

**8,187** student engagements with units relating to SDG13  
14.8% of total student engagement

podcast is aimed at a more expert audience and takes a deeper look at science, policy and culture around climate change.

### Advising Lambeth Council on climate change:

Researchers at King's have joined the independent expert advisory group for Lambeth's citizens' assembly on climate change along with climate change and other social justice charities. The citizens' assembly is tasked with reviewing the latest environmental evidence, developing Lambeth's climate change commitments, considering new initiatives to tackle climate change in the borough and agreeing targets to ensure Lambeth becomes carbon neutral by 2030.

"The climate assembly is designed to explore what everyday residents from Lambeth think about the climate emergency we're facing and what the solutions might be [...] if we are to achieve our commitment to making Lambeth a carbon neutral borough by 2030."

Jack Hopkins, Leader of Lambeth Council

**Sustainability Month:** In 2021, King's Sustainability Week became King's Sustainability Month. It brought King's community together in a series of events, encouraging staff and students to collaborate and share knowledge and equipping them with the tools to help build a more progressive and positive future at King's and beyond. 21 events were organised during Sustainability Month 2021, including the #TakeAction Sustainability Hackathon, which provided an opportunity for King's community members to work together to problem solve and put ideas into action on some of today's most pressing environmental challenges.

### Climate intervention: developing a youth guide with and for young people:

Working with partners at Youth and Environment Europe, King's delivered a non-formal intervention that aimed to identify the questions and priorities of young people in relation to different responses to the climate crisis – including different methods of geo-engineering – and build capacity for young people to have climate conversations.

### China, the Environment and Climate Change:

King's Lau China Institute, in partnership with Young China Watchers, ran the 2021 edition of their essay competition on 'China, the Environment and Climate Change'. The competition aims to discover and showcase the newest young writing on China at King's and beyond to help foster the next generation of expertise on China and provide a platform for new voices.

## Operations

**Sustainability Report:** King's is committed to report its progress against sustainability targets annually. Despite challenges, the university continued to make significant progress in achieving its environmental sustainability ambitions. This is summarised in King's Sustainability Report 2020-21.



**King's Climate Action Network:** Launched in October 2020, King's Climate Action Network (CAN) is an open, interdisciplinary forum that connects people from King's community who are passionate about sustainability and climate and want to help create and implement a zero-carbon strategy for the university. Through a number of sub-groups, King's CAN has proposed solutions to reduce the university's carbon emissions and was involved in the development of King's Climate & Sustainability Action Plan, which was released in 2021-22.

### King's target to be net zero carbon by 2025:

King's aims to be net zero carbon by 2025, taking into account scope 1, 2 and 3 carbon emissions. As well as reaching net zero, the university commits to reducing energy emissions by at least 50% between 2018-19 and 2025.





# SDG14: LIFE BELOW WATER

## Conserve and sustainably use the oceans, seas and marine resources for sustainable development

### Research

#### Whistleblowing around seagrass loss in the UK:

Published in *Frontiers in Plant Science*, King's research concluded that at least 44% of the UK's seagrass has been lost since 1936, of which 39% has been since the 1980s. The study highlights an urgent need to conserve and restore current and degrading seagrass meadows in our efforts to mitigate the effects of the climate crisis. The results of this study provide extra impetus to protect current seagrass meadows and attempt to restore those that have been degraded.



"The catastrophic losses documented in this research are alarming but offer a snapshot of the potential of this habitat if efforts are made to protect and restore seagrass meadows across the UK. These meadows have the potential to support our bountiful fisheries and help us win the fight against climate change and environmental degradation. The UK is lucky to have such a resource in our waters, and we should fight to protect it!"

Dr Alix Green, student on the NERC DTP PhD programme

#### The impact of solar ultraviolet radiation on fish: immunomodulation and photoprotective strategies:

This study, led by King's researchers, indicates that excessive exposure of fish to solar UVR also leads to less effective control of infections. This detrimental effect on the health of fish requires recognition, and researchers advocated that procedures need to be put in place to minimise such consequences.

#### Assessing the distribution pattern of otters in four rivers of the Indian Himalayan biodiversity hotspot:

This study assesses otter distribution in four rivers of Uttarakhand as a basis for informing future conservation actions. It provides critical interdisciplinary baseline information to guide decision-makers towards developing a

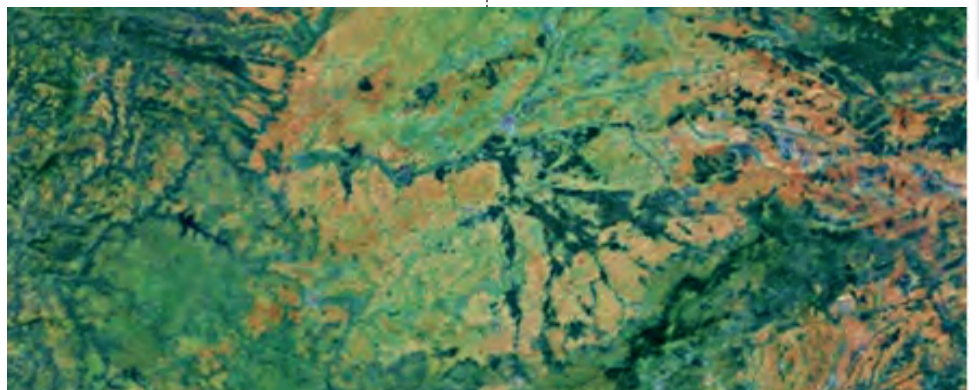
targeted, otter-specific conservation programme for this important Himalayan biodiversity hotspot. The otter conservation education programmes conducted during this study also resulted in a proposal to set up a community-based conservation initiative to monitor and report otter sightings from the area, potentially representing a way forward for achieving simultaneous otter conservation and associated ecosystem benefits for local communities.

#### Multiple conservation designations: impact on the effectiveness of marine protected areas (MPAs) in the Irish Sea:

MPAs are a conservation tool designed to adequately manage and protect marine resources threatened by human activity. Data is lacking on the effectiveness of these protected areas in reaching their conservation objectives due to sites being inadequately monitored. Metadata compiled from the World Database on Protected Areas and conservation reports from MPA managers were used to investigate the effectiveness of MPAs. The results show a positive correlation between the number of designations of a site and the existence of a publicly available management plan but highlight the need to better understand the requirements of conservation designations at different levels and how they interact with each other.

#### Evaluating the eutrophication risk of an artificial tidal lagoon:

This study examines the existing physical estuarine characteristics in Swansea Bay and evaluated the risk of eutrophication following tidal power plant operation. Findings from the King's-led research suggest that the



### RESEARCH METRICS

0.9%  
of the publications in the UK

45 publications

60%  
of the papers relating to SDG14 were internationally co-authored (27 papers)

761 citations

41 policies citing King's research

192 mentions of King's research in the media

# EDUCATION METRICS



# 84

teaching units relating to SDG14

13 directly and 71 indirectly



# 4,679

student engagements with units relating to SDG14

8.5% of total student engagement

management strategies for protecting water quality in heavily modified estuaries such as Swansea Bay may not need to be altered following the operation of a tidal lagoon. However, given the conditions for phytoplankton growth, researchers recommended that measures controlling nutrient inputs to the impounded water column within the lagoon should be considered as a precautionary step.

## Education

**Re-enchanting more-than-urban water metabolism through degrowth:** As part of World Water Day 2021, King's hosted a public talk with the IHE Delft – the international graduate water education institute, with whom King's has an agreement for collaborative research and education – and the Amrta Institute. The talk provided attendees with key insights and case studies on large-scale environmental transformation in Semarang, Indonesia, touching upon issues of flooding, water infrastructure and urbanisation

## Service and engagement

**Co\$ting Nature:** Decision-makers require consistent, accurate and detailed information to advise and support environmental sustainability initiatives. Co\$ting Nature is a web-based tool that has more than 80 datasets already inputted, allowing users to make quick but robust conservation-focused decisions. Co\$ting Nature, developed by King's in collaboration with AmbioTEK and UNEP-WCMC, assesses ecosystem services (ES) – the benefits people obtain from nature – provided anywhere in the world, identifying their beneficiaries and assessing the impacts of human interventions and scenarios. Co\$ting Nature provides policy support for the sustainable management of ES through the definition of conservation priority, based on the spatial distribution of ES, critical ecosystems and current human pressures as well as future threats.



Credit: South Cumbria Rivers Trust

**NAIAD – The financialisation of nature:** Through innovative work on climate finance and on water, members of the Political Ecology, Biodiversity & Ecosystem Services group at King's have pioneered new understandings of the financialisation of nature. Work on natural solutions, including flood mitigation, is directed at understanding nature's contributions to underwriting insurance risks.



Credit: National Trust

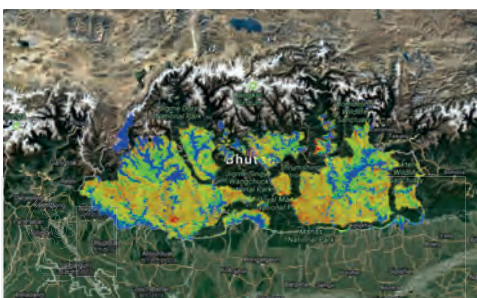
**Cumbria River basin planning:** King's researchers are advising on an award-winning Cumbria River restoration programme, which aims to enhance and restore rivers and floodplains in designated areas – improving our environment and reducing flood risk for people and wildlife. Since 2009, more than 100 projects were completed from small to large-scale construction, and support is continuing with projects across three key sites, including Bowston Weir removal.

## Operations

**Sustainable food from aquatic ecosystems:** King's Sustainable Food Policy guarantees the university's commitment to serve sustainably caught fish from the UK.



**Preventing pollution of marine ecosystems:** King's Environmental Management System is certified ISO14001, guaranteeing international standards of practice and providing guidelines, including for water discharges (to uphold water quality in order to protect ecosystems, wildlife, and human health and welfare). King's Environmental Sustainability Policy also commits the university to responsible management of water and prevents pollution of land, water and air.





# SDG15: LIFE ON LAND

**Protect, restore and promote sustainable use of terrestrial ecosystems, sustainably manage forests, combat desertification, and halt and reverse land degradation and halt biodiversity loss**

## Research

### Marjan Conflict, Biodiversity & Military Sustainability Study Group:

The Marjan Centre was formed in 2010 as a Hub for interdisciplinary research around the impact of conflicts on biodiversity and currently leads two key projects: the Strategic Wildlife Protection and Involvement of Military Forces and the Green Helmet Observatory, which explores the relationship between armed forces and 'green' sustainability.

### Political Ecology, Biodiversity & Ecosystem Services (PEBES):

PEBES provides a collaborative platform for King's researchers to work on environmental conservation, the social (re)production of nature and resource management. Research principally focuses on different approaches to biodiversity conservation (e.g. ecosystem services; nature-based solutions); the relationship between the governance and management of environmental

resources and development; political ecology; and the financialisation of nature and natural capital.

### Environmental Security Research Group:

The group is a forum for collaboration between the security community and scholars working on issues of environmental security. It focuses, in particular, on supporting and developing educational, research and policy-related projects and activities on two key themes: (1) The planetary, international, national and human security repercussions of climate change and biocapacity loss and (2) The opportunities, challenges and limitations for security forces to help governments and societies manage, mitigate and adapt to these repercussions. In bringing scholarly and practitioner expertise together on these issues, the research group aims to support security sector reform efforts to create sustainable, rule-of-law-based security assistance for the proliferating environmental crises facing the world.

### Economic costs of invasive alien species across Europe:

With the contribution of King's researchers, this study is the first comprehensive and detailed effort that quantifies the costs of invasive alien species (IAS) across European countries and examines temporal trends in this data. In addition, the distributions of costs across countries, socioeconomic sectors and taxonomic groups were examined. Total costs of IAS in Europe summed to US\$140.20 billion (or €116.61 billion) between 1960 and 2020, with the majority (60%) being damage-related and impacting multiple sectors. Costs were also geographically widespread but dominated by impacts in large western and central European countries.



**99** publications

**76%** of the papers relating to SDG15 were internationally co-authored (75 papers)

## RESEARCH METRICS

**1.4%** of the publications in the UK

**1,645** citations

**1,118** mentions of King's research in the media

**89** policies citing King's research



## Education

### Global Environmental Issues: Science & Solutions

This module explores some of the key issues affecting the environmental security of the modern world. It enables students to gain a broad understanding of 10 important environmental issues that have emerged during the Anthropocene, the science that underlies them, the various management and mitigation options and technologies and how all of this links to policy.

**Cultivating the future:** While typically biodiversity protection and climate change policies have been treated as two separate sets of challenges, it is increasingly recognised that the two are inextricably intertwined. In June 2021, the United Nations announced it now aims to tackle biodiversity and climate change together – looking at the social impacts of both. Building on this shifting paradigm, a public event focused on how nature can provide solutions for sustainability, directly covering issues around human interventions in the ecosystem, including rapid agricultural production; natural resource extraction; overfishing; pollution; and the destruction of wildlife habitats, taking the perspective of China.

## EDUCATION METRICS

**109** teaching units relating to SDG15

17 directly and 92 indirectly

**5,487** student engagements with units relating to SDG15

9.9% of total student engagement

## Service and engagement

**Marjan Marsh Award:** The award programme is run annually, celebrating individuals who made invaluable contributions to an area where conflict and conservation overlap. The award is run in partnership with the Marsh Charitable Trust.

### Are Protected Areas the Future of Conservation?

This panel event was organised as part of the Economic and Social Research Council Festival of Social Science and provided a platform to discuss the challenges of protected areas as well as often-ignored issues on biodiversity conservation.

### Westminster Biodiversity Partnership:

Westminster's Biodiversity Action Plan aims to prevent the decline of – and improve conditions for – species and habitats in Westminster. The Biodiversity Action Plan has been produced by the Westminster Biodiversity Partnership, which included King's and local stakeholders, with one objective in common: to ensure a healthy future for wildlife in Westminster.



**4** ventures supported by King's Entrepreneurship Institute



## Operations

**King's Community Garden:** A community garden, open to all students and staff, has been set up by Sustainability Champion Oli Austen at King's Guy's campus. Regular gardening sessions are run at the garden.

**Sustainably farmed food on campus:** King's Sustainable Food Policy guarantees the university's commitment to serve sustainably farmed food.



**King's Biodiversity Action Plan and green spaces on campus:** King's Environmental Sustainability Policy has a commitment to protecting and enhancing the environment to prevent habitat and biodiversity loss as well as maintaining and enhancing green spaces to support biodiversity. This objective is further guided by King's Biodiversity Action Plan, which sets out how the university intends to support development and deliver enhancements of its estate in a way that embraces nature, provides high-quality spaces for educational, research, cultural and recreational activities and benefits wildlife and the wider community. The Memorial Garden at Guy's Campus is open to the general public, providing green space in a central London location and a 'pocket park', accessible to the public, which was created in collaboration with local partners.





# SDG16: PEACE, JUSTICE AND STRONG INSTITUTIONS

Promote peaceful and inclusive societies for sustainable development, provide access to justice for all and build effective, accountable and inclusive institutions at all levels

## Research

**Foresight Research Group:** The Foresight Research Group is interested in studying warnings and preventive actions concerning violent conflict within states, genocide and mass atrocities as well as more generally harmful phenomena, such as systemic financial crises, sudden or irreversible climate change, natural catastrophes or pandemics. The group is responsible for a number of research, knowledge exchange and engagement activities that directly aim to strengthen the resilience and capacity of public institutions, with, for example, researchers leading an expert task force on how the EU can improve its capacities for preventing genocide.

**Transnational Law Institute (TLI):** The TLI is

dedicated to the development and dissemination of knowledge that addresses key transnational issues in which law and lawyers can play a relevant role. The TLI acts as a catalyst for border-crossing research and encompasses legal fields normally associated with public law such as the protection of universal human rights, the strengthening of democracy and the rule of law, the protection of human health and the environment, and the regulation of transnational corporations and transnational crime.

**Centre for International Governance and Dispute Resolution (CIGAD):** CIGAD brings together academics, policymakers and practitioners working on international law and dispute resolution in a context of increasingly deadlocked or dysfunctional international institutions. In addition to working with a growing network of global partners and offering a wide range of events open to the public, the Centre provides opportunities to participate in world-leading research and engage in discussions on the critical issues facing the international community. CIGAD also offers a one-year fellowship at the Permanent Court of Arbitration at The Hague.



## Education

**Study programmes:**

**Executive Master of Public Administration (EMPA):** The EMPA is a two-year, part-time, blended course that has been specifically developed for experienced, ambitious policy professionals to learn from experts across the policy landscape. The online teaching is complemented by one-week intensive teaching and residencies in London and Geneva. The programme culminates with a final practical

## EDUCATION METRICS

**388** teaching units relating to SDG16  
107 directly and 281 indirectly

**20,072** student engagements with units relating to SDG16  
36.3% of total student engagement

project, which is tailored to each student's professional interests and priorities.

**Participatory and Deliberative Governance:** This module introduces students to the recent developments in participatory and deliberative governance, focusing in particular on democratic innovation. The module seeks to develop students' skills in critical analysis and further their understanding of the role played by participatory and deliberative governance in contemporary public administration.

**Professional Education for policy- and law-makers:** King's offers several avenues for law professionals, policymakers and civil servants to access continued professional education through short courses and bespoke executive trainings and courses, notably delivered as part of King's Professional and Executive Education. This includes modules around (1) Public Sector Leadership, (2) International Commercial Law and International Commercial Arbitration, (3) Anti-Corruption and the Rule of Law and (4) Approaches to Policymaking.



**Conflict Resolution in Divided Societies:** The master's programme is affiliated to the Centre

## RESEARCH METRICS

**6.2%** of the publications in the UK

**697** publications

**47%** of the papers relating to SDG16 were internationally co-authored (331 papers)

**6,965** citations

**184** policies citing King's research

**7,938** mentions of King's research in the media

for the Study of Divided Societies, which itself makes a significant contribution to public debate and the dissemination of ideas on a range of problems facing leaders in the 21st century. The programme offers a multidisciplinary, comparative study of national, ethnic and religious conflicts in deeply divided societies. It compares case studies from the Middle East and around the world, examining the theoretical literature on the causes and consequences of conflict, conflict regulation and internationally led and grassroots peace processes.

**African Leadership Centre (ALC):** The ALC at King's gathers a community of leaders driving peace, security and development and offering courses, programmes and research opportunities to inform and influence debate on these issues. The Centre has trained more than 100 African scholars from 22 African countries who will become the next generation of academics and decision-makers, committed to engendering peace and development in society. The ALC also has a semi-autonomous research and training sister centre in Nairobi (Kenya), which the Centre works closely with to deliver joint teaching and research programmes.

**Community Organising training:** In partnership with Citizens UK, King's ran a bespoke Community Organising training course for the first time in 2021, allowing participants to learn more about key leadership skills, such as storytelling, strategy, action-planning and negotiation. The training was developed for students with an interest in creating a positive difference and aimed to empower them to become changemakers with the ability to take action and hold decision-makers accountable on the social issues that matter most to them.

## Service and engagement

**Legal Clinic:** King's Legal Clinic works with leading law firms and in-house supervising solicitors to offer free legal advice in a range of specialist areas, including Housing, Intellectual Property, Immigration and Asylum, Human Rights and the Environment. The Clinic provides students with the opportunity to work on live cases, providing free high-quality legal advice to members of the public, in particular those who cannot afford to pay. In 2020-21, the Clinic received more than 610 enquiries from clients. Evaluation studies showed that 97% of clients would describe the service received at the Clinic as very good to good and 93% of clients would recommend the Clinic to someone else. The Clinic also aims to engage in

"I can say I very much enjoyed meeting your students and found their advice most interesting. They came up with a solution that was somewhat 'outside the box' and one I had not even considered but believe can work. I intend to follow it as soon as possible."

**Client, Duncan Lewis Immigration & Asylum Clinic**

legal activism and research initiatives relating to access to justice and social justice issues. The Clinic works with students on public interest cases and research projects that aim to protect the environment and promote human rights. Internationally, the Clinic's legal interventions support communities adversely affected by multinationals, particularly extractive companies.

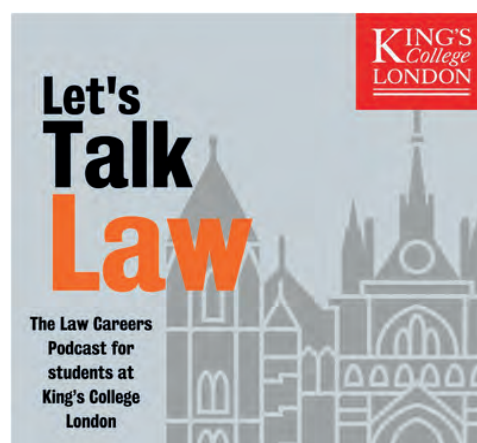
**Evidence Development and Incubation Team (EDIT):** The EDIT, based in King's Policy Institute, provides evaluation services for a diverse range of clients across the public and third sector. It was founded to address the growing need for high-quality evidence that shows what works in public services, education and other policy areas. The unit has close connections to What Works for Children's Social Care, conducted an impact evaluation for the Centre for Homelessness Impact, was on the evaluation panel for the Youth Endowment Fund, and incubated the Centre for Transforming Access and Student Outcomes from 2019 to early 2021.



**King's Think Tank:** King's Think Tank was created as a means of empowering change through student activism without resorting to civil disorder. It is a unique student society

and the first student-led policy institute in London. Through seven policy centres, the Think Tank strives to address the pressing challenges of today's society by organising policy workshops, panel discussions, lobbying trips and thought-provoking podcasts. Critical analyses are published in the group's online blog and formal policy papers are published in an annual policy journal, *The Spectrum*.

**Let's Talk Law:** Let's Talk Law is the Law Careers Podcast for King's community interested in law and a career in the field. The podcast was developed to inspire students and the wider community on the breadth of opportunities across the law sector and keep up to date on the industry.



**5 ventures supported by King's Entrepreneurship Institute**

## Operations

**King's College London Students' Union (KCLSU):** KCLSU aims to make sure every King's student has the best student experience possible. With nearly 300 societies, sports and other student activity groups, KCLSU organises social, sporting and cultural activities and provides opportunities for students to develop skills. KCLSU is independent from King's management and its decisions, policies and activities are decided by King's student members, who elect the Student Officers, Union Development members and Student Reps, ensuring students can voice their opinions.



**Commitment to Academic Freedom and Freedom of Speech:** The principle of Academic Freedom for all has a core purpose as a university and is thus recognised as being of utmost importance at King's. The College Charter and Statutes (as established by Queen Elizabeth II) and the College Ordinances directly reference academic freedom. King's and KCLSU also published a joint statement on Freedom of Expression, which guarantees that ideas are freely exchanged, and debates can be open and uncensored at King's.

**Transparent finances and principles on corruption and bribery:** King's is committed to ensuring that corruption, including extortion and bribery, are prevented in all our activities and collaborations. A range of policies have been established to help guarantee that transparency is ensured. This includes the (1) Policy on Fraud, Theft, Bribery and Corruption, (2) Anti-Money Laundering Policy; and (3) The Donation Policy. King's also ensures transparency and clarity on its finances and investments by making a comprehensive financial statement publicly available every year.





# SDG17: PARTNERSHIPS FOR THE GOALS

## Strengthen the means of implementation and revitalise the Global Partnership for Sustainable Development

### Research

**King's Engaged Research Network (KERN):** KERN brings together King's researchers, clinical and technical staff and postgraduate students who are interested in engaging different audiences with their field. It runs regular workshops and events where staff and students can share and celebrate their public engagement practices.



**Research for Health in Conflict:** The project aims to build capacity in health-related research and policymaking in conflict-affected areas. The group's primary mission is to work in partnership to co-create sustainable research in the MENA region – including Jordan, the Occupied Palestinian Territories, Libya and Turkey, and conflict-affected populations in Syria, Iraq, Libya and Yemen – to address the major health challenges arising from conflict, with a focus on non-communicable diseases, specifically cancer and mental health.



**Resilience, Ethnicity and Adolescent Mental Health (REACH):** REACH is an ongoing study on adolescent mental health in Southwark and Lambeth, bringing together more than 4,000

young people to talk about their mental health, social circumstances and experiences, and the impact that poverty, racism and social support can have on their wellbeing. Working closely with community partners to co-produce and disseminate the findings, the REACH team engages regularly with stakeholders and the general public through policy reports, online videos, podcasts and social media, as well as community-based activities such as in-school talks and workshops, festivals and exhibitions.

**10,738** publications

**60%** of papers were internationally co-authored (6,477 papers)

**RESEARCH METRICS**

**5.1%** of the publications in the UK

**194,500** citations

**162,793** mentions of King's research in the media

**4,663** policies citing King's research

Elsevier does not map research keywords against SDG17. Figures are the total for SDGs 1 to 16 and show the extent of King's research partnerships across all goals.



**ZOE COVID study app:** The study is the world's largest ongoing study into COVID-19. It was one of three studies used by the Department of Health and Social Care to inform and plan government response to the rapidly changing pandemic. It has shaped health policy and tracked disease hotspots since 2020.



### Education

**Civic Leadership Academy (CLA):** CLA was designed to address the barriers that underrepresented students are facing by giving them access to opportunities that enhance their university experience, aid their personal development and support them in their future careers. Developed in partnership with Citizens UK and local charities, the curriculum includes training sessions, masterclasses, a residential retreat and sustained one-to-one mentorship. Students also have the opportunity to undertake internships with local charities. CLA provided internships for 50 students (72% of which identified with two or more underrepresented characteristics). The students completed 11,270 hours of service in the local community.



**King's Civic Challenge:** King's Civic Challenge brings together teams of students, staff and local charities in Lambeth, Southwark and Westminster to develop fresh perspectives on issues faced by local communities and co-create solutions. In 2020-21, nine projects won funding in the second year of the King's Civic Challenge. Awards were given out to align with the SDGs and Civic Challenge focus areas. Each awarded community partner received financial support alongside a package of evaluation and support. Projects were developed with Age UK Westminster, Caxton Youth Organisation and the Borough Food Cooperative, among others.



**CREATES Strategic Partnership:** King's is a part of Creating Responsive, Engaging and Tailored Education with Students (CREATES), an Erasmus+ Strategic Partnership between six European universities with the objective of enhancing practices in higher education that foster co-creation. The partnership is developing and disseminating materials, events and toolkits that are helpful to teachers, advisors and students in Higher Education and answer the questions: 'How can we design, implement and assess courses that are co-created by students?' and 'How can we provide effective advising for sound curricular choices?'.

"I chose to study abroad because I thought it was a great opportunity to develop both academically and personally, to build on what I learnt at King's and expand my knowledge and view of the world."

**King's student on their year abroad**

**Promoting Global mobility:** With a wide range of joint/ double degrees at all levels and many opportunities to study abroad, King's Global Mobility programmes build on a multitude of partnerships with HEIs across the world to provide diverse and enriching educational experiences for students. Global mobility at King's is supported by the Go Global initiative, an annual two-week celebration and promotion of opportunities to study abroad. It is based on a series of in-person and online briefings and events where students can learn about different opportunities and how the application process and general study cycle work.

## Service and engagement

**Global Days of Service:** Each year on the week of 25 March – the day the university was founded – King's community comes together as part of King's Global Days of Service to take part in volunteering activities across the world. King's is the first university in the UK to run volunteering events at this scale. During the 2021 Global Day of Service, 544 volunteers from the King's community came together across 53 different countries and spent 2,323 hours volunteering.



connects King's community with local organisations that are looking to recruit new trustees. Since the launch, hundreds of students and staff have joined sessions with trustee charity Getting on Board to learn about the role of a charity board member, the skills they could develop and the difference they could make.

**Circle U. European University Alliance:** King's is part of the Circle U. European University Alliance, a network of nine universities who share a commitment to developing knowledge in service to society and addressing global challenges. This initiative aims to create an inclusive, research-intensive and interdisciplinary network, offering students both a multicultural and multilingual learning experience. The SDGs are at the centre of Circle U's ambitions to pool the existing strengths of partner universities in education, research and innovation to make a substantial impact on the sustainability agenda.



**Alliance for a Cavity-Free Future (ACFF):** The ACFF is challenging the misconception that tooth decay need be an inevitable part of life and works to create a world where it is not viewed as such. The goal of the Alliance is that 'every child born in 2026 and thereafter should stay cavity-free during their lifetime'. With a network of 27 groups in more than 40 countries, local teams are working to increase awareness of the caries process within their communities, promoting best oral health practices and offering education on the behavioural and dietary aspects of preventing tooth decay.

## EDUCATION METRICS

**300** teaching units relating to SDG17  
66 directly and 234 indirectly

**20,250** student engagements with units relating to SDG17  
36.6% of total student engagement

**King's Global Health Partnerships (KGHP):** KGHP works with health facilities, academic institutions and governments to strengthen health systems and improve the quality of care in four countries: Somaliland, Sierra Leone, the Democratic Republic of Congo and Zambia. Through long-term partnerships and a global volunteering scheme, KGHP connects UK and African health professionals and promotes skills and knowledge exchange through collaborative research, provision of training, mentoring, funding opportunities and hands-on support. This mutual learning contributes to building a stronger health workforce and improved quality of healthcare, both internationally and in the UK.



**9** ventures supported by King's Entrepreneurship Institute

53 countries, 544 volunteers, 2,323 volunteer hours with communities, £20,7000 economic impact through volunteering

## Operations

**Service Time:** King's offers opportunities to support staff wellbeing by allowing up to three days per year of voluntary work for another organisation or volunteering scheme. This Service Time is paid and part of our commitment to support and enable colleagues to undertake community activity beyond the university. With the launch of King's Volunteering Platform in 2022, which connects student and staff members directly with volunteering opportunities, King's is further encouraging its community to take action and volunteer with community partners.

**The SDG Accord:** Since 2019, King's has been a signatory of The SDG Accord, which represents the higher education sector's collective response to the SDGs and offers a valuable opportunity for understanding and scaling impact. Each year, the university shares progress, experience and learning from implementing the SDGs. We are also providing case studies on some of King's most impactful work across the different SDGs. Data from universities is then aggregated into sector-wide Annual Reports for use by the UN, governments, businesses and wider society.

# SDGs COMPLETE DATASET

| Source         | Research            |                     |                                  |                                  |                                      |                     |                                |  |  |   |  |  | Education |           |           |           |           |           |  |  |
|----------------|---------------------|---------------------|----------------------------------|----------------------------------|--------------------------------------|---------------------|--------------------------------|--|--|---|--|--|-----------|-----------|-----------|-----------|-----------|-----------|--|--|
|                | THE Impact Rankings | THE Impact Rankings | Number of publications in the UK | Number of publications at King's | Proportion of publications in the UK | Number of citations | Field weighted citation impact | Number of internationally co-authored papers | Proportion of internationally co-authored papers | Number of policies citing King's research | Number of patents citing King's research | Number of mentions of research outputs in the media (news, social media, etc.) | ESD Audit | ESD Audit | ESD Audit | ESD Audit | ESD Audit | ESD Audit | Student engagements with units on SDGs | Proportion of total engagement with teaching units |
| Timeframe      | 2021                | 2021                | 2020-21                          | 2020-21                          | 2020-21                              | 2020-21             | 2020-21                        | 2020-21                                      | 2020-21  | 2020-21                                   | 2020-21                                  | 2020-21  | 2020-21   | 2020-21   | 2020-21   | 2020-21   | 2020-21   | 2020-21   | 2020-21                                | 2020-21  |
| Overall output | 96                  | 11                  | 473,054                          | 25,697                           | 5.4%                                 | 194,500             | 3.39                           | 15,027                                       | 58%  | 6,047                                     | 69                                       | 634,793  | 809       | 82%       | N/A       | N/A       | N/A       | N/A       | 55,272                                 | N/A  |
| SDG1           | 79                  | 19                  | 3,824                            | 181                              | 4.7%                                 | 1,236               | 1.75                           | 101  | 56%  | 190                                       | 2  | 399  | 180       | 18%       | 43        | 4%        | 137       | 14%       | 11,951                                 | 21.6%  |
| SDG2           | 54                  | 101-200             | 6,043                            | 155                              | 2.6%                                 | 2,729               | 2.64                           | 114  | 74%  | 196                                       | 0  | 2,973  | 127       | 13%       | 26        | 3%        | 101       | 10%       | 5,427                                  | 9.8%   |
| SDG3           | 87                  | 21                  | 82,474                           | 7,194                            | 8.7%                                 | 156,696             | 3.97                           | 4,454  | 62%  | 687                                       | 32                                       | 131,913  | 402       | 41%       | 142       | 14%       | 260       | 26%       | 19,117                                 | 34.6%  |
| SDG4           | 52                  | 401-600             | 7,221                            | 259                              | 3.6%                                 | 1,673               | 1.51                           | 127  | 49%  | 143                                       | 0  | 5,792  | 263       | 27%       | 33        | 3%        | 230       | 23%       | 13,929                                 | 25.2%  |
| SDG5           | 65                  | 83                  | 6,889                            | 342                              | 5.0%                                 | 1,678               | 1.21                           | 161  | 47%  | 168                                       | 0  | 258  | 264       | 27%       | 65        | 7%        | 199       | 20%       | 14,287                                 | 25.8%  |
| SDG6           | 63                  | 81                  | 5,186                            | 106                              | 2.0%                                 | 2,618               | 3.67                           | 76   | 72%  | 119                                       | 0  | 652  | 131       | 13%       | 25        | 3%        | 106       | 11%       | 6,104                                  | 11.0%  |
| SDG7           | 60                  | 101-200             | 15,597                           | 158                              | 1.0%                                 | 1,874               | 2.15                           | 116  | 73%  | 92  | 1  | 761  | 101       | 10%       | 14        | 1%        | 87        | 9%        | 5,822                                  | 10.5%  |
| SDG8           | 76                  | 22                  | 8,848                            | 246                              | 2.8%                                 | 4,768               | 3.30                           | 151  | 61%  | 311                                       | 0  | 1,062  | 348       | 35%       | 74        | 7%        | 274       | 28%       | 20,006                                 | 36.2%  |
| SDG9           | 89                  | 71                  | 13,208                           | 215                              | 1.6%                                 | 1,650               | 1.66                           | 130  | 60%  | 263                                       | 0  | 47   | 423       | 43%       | 86        | 9%        | 337       | 34%       | 23,290                                 | 42.1%  |
| SDG10          | 82                  | 18                  | 10,496                           | 512                              | 4.9%                                 | 4,003               | 1.60                           | 282  | 55%  | 1,408                                     | 0  | 5,001  | 358       | 36%       | 111       | 11%       | 247       | 25%       | 19,453                                 | 35.2%  |
| SDG11          | 90                  | 6                   | 10,304                           | 260                              | 2.5%                                 | 3,002               | 2.17                           | 165  | 63%  | 404                                       | 0  | 1,502  | 243       | 25%       | 47        | 5%        | 196       | 20%       | 13,091                                 | 23.7%  |
| SDG12          | 84                  | 17                  | 6,733                            | 92                               | 1.4%                                 | 950                 | 2.51                           | 61   | 66%  | 165                                       | 0  | 148  | 226       | 23%       | 38        | 4%        | 188       | 19%       | 13,030                                 | 25.2%  |
| SDG13          | 73                  | 20                  | 10,548                           | 177                              | 1.7%                                 | 2,252               | 2.39                           | 106  | 60%  | 203                                       | 0  | 3,037  | 131       | 13%       | 34        | 3%        | 97        | 10%       | 8,187                                  | 14.8%  |
| SDG14          | 62                  | 85                  | 4,867                            | 45                               | 0.9%                                 | 761                 | 2.23                           | 27   | 60%  | 41  | 0  | 192  | 84        | 8%        | 13        | 1%        | 71        | 7%        | 4,679                                  | 8.5%   |
| SDG15          | 78                  | 39                  | 6,907                            | 99                               | 1.4%                                 | 1,645               | 2.70                           | 75   | 76%  | 89  | 0  | 1,118  | 109       | 11%       | 17        | 2%        | 92        | 9%        | 5,487                                  | 9.9%   |
| SDG16          | 89                  | 4                   | 11,296                           | 697                              | 6.2%                                 | 6,965               | 2.02                           | 331  | 47%  | 184                                       | 0  | 7,938  | 388       | 39%       | 107       | 11%       | 281       | 28%       | 20,072                                 | 35.2%  |
| SDG17          | 96                  | 10                  | N/A                              | N/A                              | N/A                                  | N/A                 | N/A                            | N/A  | N/A  | N/A                                       | N/A                                      | N/A  | 300       | 30%       | 66        | 7%        | 234       | 24%       | 20,250                                 | 36.6%  |
| Total SDGs     | N/A                 | N/A                 | 210,441                          | 10,738                           | 5.1%                                 | 194,500             | N/A                            | 6,477  | 60%  | 4,663                                     | 35                                       | 162,793  | 4,078     | N/A       | 941       | N/A       | 3,137     | N/A       | 224,182                                | N/A  |

This page was left blank intentionally.

